



PHOTO/VIDEO
CASES

TABLE OF CONTENTS



SKB OWNERS/FOUNDERS: DAVE SANDERSON & STEVE KOTTMAN

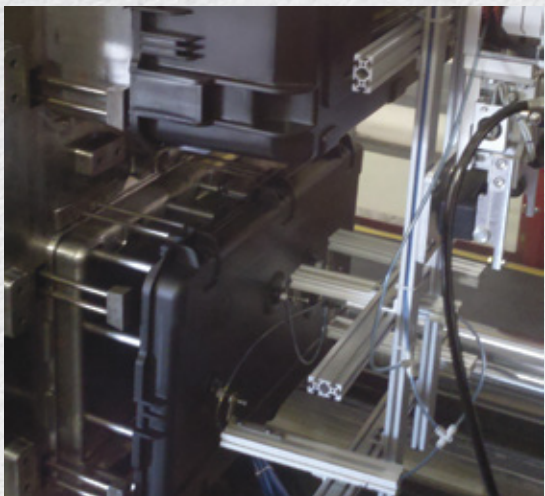


OUR STORY

In 1977, two ambitious college students developed the first SKB case in a small Anaheim, California garage. What would eventually become the industry's premier lightweight molded guitar case was just the first of many innovations that have since cemented SKB's global reputation as a leading manufacturer of superior equipment transportation solutions. These solutions are helping diverse industries around the world—from music and photography to sports, aerospace, military, industrial, and beyond—to protect their livelihoods, build better products, and get the job done.

If our more than 40 years of steady growth have taught us anything, it's that we have our customers to thank for giving us the opportunity to excel; it's their challenges that have allowed us to develop and grow. We at SKB are grateful for the continued trust and loyalty of our customers, and we remain dedicated to the assurance that every case with an SKB logo has been manufactured with an unconditional commitment to unsurpassed quality.





One of our injection molders in action

INJECTION MOLD

This is SKB's latest venture in our quest to provide the most innovative hard shell case products. Injection molding is an expensive investment that leaves no room for error. Made with extreme pressure, even the smallest injection molded part requires a very large and heavy mold (some of SKB's molds are nearly 20 tons!). The injection mold process produces many of our parts—such as our patented Trigger Latches—and our gasket-sealed waterproof iSeries cases are proving to be popular transport solutions for everyone from touring musicians and photographers, to military personnel. Never before has an ATA flight case been so advanced and lightweight.



Molds rotating during production

ROTO-MOLD

In 1997, SKB invested in roto-mold machinery. These molds are ideal for making large and cylindrical cases. The PE roto-mold material starts as a fine powder that is measured according to the size of the case. The material is then sealed up in a multi-piece aluminum mold, fixed on a biaxial rotating wheel, and heated to 800° in a very large oven while the mold constantly rotates. The powder melts and coats the inside of the mold and, after cooling, the cast is disassembled and the new case is removed. Roto-molding is great for providing maximum transport protection and impact resistance.



Vacuum mold for keyboard case

VACUUM FORM

Also known as thermal form, this was the first and most recognized “SKB Style” case. This method is very popular for everything from guitar and band instrument cases to golf cases, rifle cases, and more. In 1990, SKB developed the first vacuum formed rack case. Acrylonitrile Butadiene Styrene (ABS) or Polyethylene (PE) is formed into solid sheets of material. The sheets are then heated and vacuum formed around aluminum castings, thus taking the shape of the mold. The edges have a distinctive aluminum valance that provides rigid construction as well as a secure fit. Vacuum formed products are known for their light weight and extreme durability.



BUILDING A BETTER CAMERA CASE

Every photographer or videographers setup is different. That's why most hard shell case companies create camera cases with "Pick-and-Pluck" (cubed) foam interiors so customers can customize their cases to fit their gear. However, the reality is that cubed foam interiors can break down over time, and the resulting foam dust isn't friendly to sensitive camera parts and lenses.

Camera case customers would never think to buy a camera bag or backpack with this type of foam interior, so why do hard shell case companies think this is an appropriate solution?

In addition to being the only case company to offer a variety of high quality PE foam specifically cut for photo and video products, SKB provides padded dividers as an alternative to cubed foam in our camera cases. But we knew these dividers could be improved upon. After all, building tough-as-nails hard shell cases is our specialty—developing superior camera case interiors is someone else's. And we're proud to say we've teamed up with the best in the business to make sure we could deliver the ultimate in camera and video transport solutions available today.

Think Tank Photo, the premier photo/video bag and backpack company, provided their expertise to help us design several quality interiors that combine the best of both worlds: soft case adaptability with the unparalleled strength and durability people expect from SKB's versatile watertight, airline-tough iSeries cases.

You'll see the results of this exceptional collaboration on the upcoming pages. With the design and manufacturing help of Think Tank Photo, SKB will expand an entire series of products under the Photo Flyer Series including dividers designed specifically for photographers and videographers, lid organizers that are perfect for storing tablets, laptops, and other accessories, as well as a bunch of game-changing innovations yet to come.

We understand that securely transporting expensive, sensitive, and highly customized gear is the number one priority for every pro photographer and videographer. With Think Tank's collaboration, we're confident we've developed the perfect solution—and we think you'll agree.

Travel confidently with your SKB case.





THINK TANK DIVIDERS

- Polyurethane backed Nylex™ divider shell and divider walls including a 90° camera body bend
- Closed cell foam and PE board reinforced nylon dividers

THINK TANK ORGANIZERS

- Padded top-load slot for documents, iPad or laptop
- Strong hook and loop for secure fit in lid
- Laminated zippered clear mesh pockets

3i-0907-6DT

i series



Interiors Designed By:

thinkTANK

iSeries Case with Think Tank dividers and fits a smaller DSLR camera and accessories

USABLE SPACE (L x W x D)
8.5" x 6.38" x 5"
(21.59 x 16.21 x 12.7 cm)



3i-1309-6DL

i series

Interiors Designed By:

thinkTANK

iSeries Case with Think Tank dividers and lid organizer, fits a DSLR camera, accessories, and tablet

USABLE SPACE (L x W x D)
12.5" x 8.5" x 4.5"
(31.75 x 21.59 x 11.43 cm)

ALSO AVAILABLE

MODEL NUMBER	DESCRIPTION	USABLE SPACE
3i-1309-6DT	iSeries Case with Think Tank dividers and convoluted lid foam	12.5" x 8.5" x 5" (31.75 x 21.59 x 12.7 cm)
3i-CV1309-TT	Think Tank cover for 3i-1309-6 cases	13.5" x 9.5" x 6.5" (34.29 x 24.13 x 16.51 cm)



3i-1510-6DL

i series

Interiors Designed By:

thinkTANK

iSeries Case with Think Tank dividers and lid organizer, fits a mirrorless camera, accessories, and a laptop up to 15"

USABLE SPACE (L x W x D)
14" x 9.5" x 4"
(35.56 x 24.13 x 10.16 cm)

ALSO AVAILABLE

MODEL NUMBER	DESCRIPTION	USABLE SPACE
3i-1510-6DT	iSeries Case with Think Tank dividers and convoluted lid foam	14" x 9.5" x 5" (35.56 x 24.13 x 12.7 cm)
3i-CV1510-TT	Think Tank cover for 3i-1510-6 cases	13.5" x 9.5" x 6.5" (34.29 x 24.13 x 16.51 cm)



3i-1711-6DT

i series

Interiors Designed By:

thinkTANK

iSeries Case with Think Tank
dividers and convoluted
lid foam

USABLE SPACE (L x W x D)

16" x 10.5" x 4.5"

(40.64 x 26.67 x 11.43 cm)



3i-1813-7DL

i series

Interiors Designed By:

thinkTANK

iSeries Case with Think Tank
dividers and lid organizer
that fits a laptop up to 15"

USABLE SPACE (L x W x D)

17.5" x 12" x 5.5"

(44.45 x 30.48 x 13.97 cm)

**ALSO AVAILABLE**

MODEL NUMBER	DESCRIPTION	USABLE SPACE
3i-1813-7DT	7" depth with Think Tank dividers and convoluted lid foam	17.5" x 12" x 6" (44.45 x 30.48 x 15.24)
3i-1813-5DT	5" depth with Think Tank dividers and convoluted lid foam	17.5" x 12" x 4" (44.45 x 30.48 x 10.16)
3i-1813-5DL	5" depth with Think Tank dividers and lid organizer	17.5" x 12" x 3.5" (44.45 x 30.48 x 8.89)

3i-2011-7DL*

i series

Interiors Designed By:

thinkTANKApproved airline
carry-on size

iSeries Wheeled Case with Think Tank dividers and lid organizer that fits a laptop up to 15"

USABLE SPACE (L x W x D)
19.5" x 10.5" x 5"
(49.53 x 26.67 x 12.7 cm)

**ALSO AVAILABLE**

MODEL NUMBER	DESCRIPTION	USABLE SPACE
3i-2011-7DT*	iSeries Case with Think Tank dividers and convoluted lid foam	19.5" x 10.5" x 6" (49.53 x 26.67 x 15.24 cm)

* Also available in non-wheeled versions 3i-2011-8DL and 3i-2011-8DT

3i-2011-7DZ

i series

Interiors Designed By:

thinkTANKApproved airline
carry-on size

iSeries Wheeled Case with Think Tank portable zippered divider insert

USABLE SPACE (L x W x D)
19.5" x 10.5" x 7"
(49.53 x 26.67 x 17.78 cm)



3i-2011-7BP

i series

Interiors Designed By:

thinkTANKApproved airline
carry-on size

iSeries Wheeled Case with Think Tank Backpack featuring dividers, a lid organizer that fits a laptop up to 15", and 2 side pockets for water bottles

USABLE SPACE (L x W x D)
18.5" x 10" x 6"
(46.99 x 25.4 x 15.24 cm)

3i-2015-7DL

i series

Interiors Designed By:

thinkTANK

iSeries Case with Think Tank dividers and lid organizer that fits a laptop up to 15"

USABLE SPACE (L x W x D)
19.5" x 14.5" x 5.5"
(49.53 x 36.83 x 13.97 cm)

3i-2215-8DT

i series

Interiors Designed By:

thinkTANK

iSeries Case with Think Tank dividers and convoluted lid foam

USABLE SPACE (L x W x D)
21" x 14.5" x 6.5"
(53.34 x 36.83 x 16.51 cm)

**ALSO AVAILABLE**

MODEL NUMBER	DESCRIPTION	USABLE SPACE
3i-2215-8DL	iSeries Case with Think Tank dividers and lid organizer	21" x 14.5" x 6.5" (53.34 x 36.83 x 16.51 cm)

3i-2217-8DL

i series

Interiors Designed By:

thinkTANK

iSeries Case with Think Tank
dividers and lid organizer
that fits a laptop up to 15"

USABLE SPACE (L x W x D)
21" x 16" x 7"
(53.34 x 40.64 x 17.78 cm)

3i-1610-10DT

i series

Interiors Designed By:

thinkTANK

iSeries Case with Think Tank
video camera dividers and
convoluted lid foam

USABLE SPACE (L x W x D)
15" x 9" x 8.5"
(38.1 x 22.86 x 21.59 cm)

10

3i-2015-10DL

i series

Interiors Designed By:

thinkTANK

iSeries Wheeled Case with
Think Tank video camera
dividers and lid organizer
that fits a laptop
up to 15"

USABLE SPACE (L x W x D)
19.5" x 14.5" x 8"
(49.53 x 36.83 x 20.32 cm)



3i-2213-12DL

i series



Interiors Designed By:

thinkTANK

iSeries Wheeled Case with Think Tank video camera dividers and lid organizer that fits a laptop up to 15"

USABLE SPACE (L x W x D)
21" x 12" x 10"
(53.34 x 30.48 x 25.4 cm)



3i-2217-10DL

i series



Interiors Designed By:

thinkTANK

iSeries Wheeled Case with Think Tank video camera dividers and lid organizer that fits a laptop up to 15"

USABLE SPACE (L x W x D)
21" x 16" x 9"
(53.34 x 40.64 x 22.86 cm)



ALSO AVAILABLE

MODEL NUMBER	DESCRIPTION	USABLE SPACE
3i-2217-12DT	Think Tank dividers and convoluted lid foam	21" x 16" x 10.5" (53.34 x 40.64 x 26.67 cm)

3i-0907-6SLR

i series

iSeries Compact DSLR Camera Case with pockets for additional lens, battery and memory card

EXTERIOR (L x W x D)

10.68" x 9.69" x 6.82"
(27.13 x 24.61 x 17.32 cm)

WEIGHT

2.8 lbs
(1.27 kg)

3i-13096SLR1

i series

Fits most popular DSLR bodies such as the Canon 5DMKIII or Nikon D850 with lens attached, and features a removable foam block for 70-200mm lens

EXTERIOR (L x W x D)

14.73" x 11.94" x 7.31"
(37.41 x 30.33 x 18.57 cm)

WEIGHT

5.2 lbs
(2.36 kg)

3i-13096A74

i series

Fits a Sony A7R IV, A7 III, A7R III, or other A7 camera bodies with lens attached, lens hood section, and two lens slots, with removable section of foam allowing a 70-200mm lens to stay attached to the camera

EXTERIOR (L x W x D)

14.75" x 12" x 15.5"
(37.47 x 30.48 x 39.37 cm)

WEIGHT

5.2 lbs
(2.36 kg)

3i-20117-SA7

i series

Fits two camera bodies with 24-70mm and 70-200mm lenses attached, and includes removable blocks to accommodate camera bodies with or without battery grips, and cut-outs for accessories, a flash, and lens hood/lens are also included

EXTERIOR (L x W x D)

21.89" x 13.96" x 9"
(55.6 x 35.46 x 22.86 cm)

WEIGHT

13.1 lbs
(5.94 kg)

3i-0705-3GP1

i series

iSeries GoPro Single Camera Case fits any Hero camera model plus battery and accessory compartment

EXTERIOR (L x W x D)

8.36" x 6.7" x 3.83"
(21.23 x 17.02 x 9.73 cm)

WEIGHT

1.2 lbs
(0.54 kg)

3i-0907-4GP2

i series

Features a custom cut foam interior that fits two GoPro cameras up to the Hero 4 version, with a storage compartment for accessories and slots for batteries

EXTERIOR (L x W x D)

10.73" x 9.69" x 4.8"
(27.25 x 24.61 x 12.19 cm)

WEIGHT

2.6 lbs
(1.18 kg)

3i-1309-6GP4

i series

iSeries Dual Layer Four GoPro Camera Case fits 4 Hero cameras plus housings, batteries, and memory cards, and includes an open bottom layer for larger accessories

EXTERIOR (L x W x D)

14.75" x 11.94" x 7.31"
(37.47 x 30.33 x 18.57 cm)

WEIGHT

5.85 lbs
(2.65 kg)



3i-201510AX1

i series

Custom interior designed to fit the Sony FDR-AX1, XW-Z100, HDR-FX1000, HVR-Z5U, HDR-AX2000, HXR-NX5U, or HXR-NX3 video camera with space for batteries, memory cards and a large accessory pocket that can fit an additional shotgun microphone or other accessories

EXTERIOR (L x W x D)

22.92" x 17.98" x 11.55"
(58.22 x 45.67 x 29.34 cm)

WEIGHT

16 lbs
(7.26 kg)



3i-20118LENS

i series

Form cut foam fits six lenses such as Canon Cinema Prime Lenses or Schneider Kreuznach Xenon FF Prime Lenses, with a 125mm diameter and 120mm base depth for each lens slot

EXTERIOR (L x W x D)

21.93" x 13.98" x 9"
(55.7 x 35.51 x 22.86 cm)

WEIGHT

9.4 lbs
(4.26 kg)



3i-1510-6XA**i series**

Fits the Canon XA11, XA15, XA40, or XA45 camcorder with additional pockets for two batteries (either BP-820 or BP-828), two memory cards, power supply, and other accessories

EXTERIOR (L x W x D)
16.24" x 12.94" x 6.78"
(41.25 x 32.87 x 17.22 cm)

WEIGHT
6.79 lbs
(3.08 kg)

3i-1610-10XF**i series**

Fits the Canon XF405 or XF400 camcorder with additional pockets for two batteries (BP-828), two memory cards, remote, power supply, and other accessories

EXTERIOR (L x W x D)
17.38" x 12.54" x 11.68"
(44.15 x 31.85 x 29.67 cm)

WEIGHT
10.2 lbs
(4.63 kg)

3i-1813-7C70**i series**

Fits the Canon EOS C70 Cinema Camera with additional pockets for two batteries (BP-A30 or BP-A60), lens, battery charger, top handle and two large accessory compartments

EXTERIOR (L x W x D)
19.83" x 15.5" x 7.88"
(50.37 x 39.37 x 20.02 cm)

WEIGHT
8.8 lbs
(3.99 kg)

3i-221312CA2**i series**

Form cut foam fits Canon C200 with top handle installed, and has pockets for two batteries, the monitor unit, dual battery charger, power supply, most 13" laptops, and other accessories

EXTERIOR (L x W x D)
24.32" x 15.5" x 14.38"
(61.77 x 39.37 x 36.53 cm)

WEIGHT
19 lbs
(8.62 kg)

3i-13096PC4K

i series

Fits a Blackmagic Design Pocket Cinema Camera 4K or 6K with lens attached

EXTERIOR (L x W x D)

14.75" x 12" x 7.25"
(37.47 x 30.48 x 18.42 cm)

WEIGHT

5.2 lbs
(2.36 kg)



3i-221312BKU

i series

Form cut foam fits Blackmagic Design Ursa Mini Pro with any shoulder mount setting, and has for four CFast cards, a pair of 8" and 12" rods, power supply, batteries, lenses, and other accessories

EXTERIOR (L x W x D)

24.32" x 15.5" x 14.38"
(61.77 x 42.55 x 36.53 cm)

WEIGHT

18.6 lbs
(8.44 kg)



3i-221312BKB

i series

Form cut fits Blackmagic URSA Broadcast Camera with fiber converter attached, and has pockets for the studio fiber converter box, the URSA viewfinder, and small accessories

EXTERIOR (L x W x D)

24.32" x 15.5" x 14.38"
(61.77 x 42.55 x 36.53 cm)

WEIGHT

19 lbs
(8.62 kg)



3i-10063ATM

i series

Fits the Blackmagic Design ATEM Mini or ATEM Mini Pro Switcher with a large additional pocket (measuring 7.25" x 4.125" x 1.25") below for the power supply and other accessories

EXTERIOR (L x W x D)

11.72" x 8" x 3.86"
(29.77 x 20.32 x 9.8 cm)

WEIGHT

2.45 lbs
(1.11 kg)

3i-18135DAV

i series

Form cut foam fits the Blackmagic Design DaVinci Resolve Micro Panel

EXTERIOR (L x W x D)

19.68" x 15.18" x 5.46"
(49.99 x 38.56 x 13.87 cm)

WEIGHT

6.8 lbs
(3.08 kg)

3i-1914N8ATM

i series

Form cut foam fits the Blackmagic Design ATEM Television Studio

EXTERIOR (L x W x D)

20.25" x 16.93" x 8.78"
(51.44 x 43 x 22.3 cm)

WEIGHT

10 lbs
(4.54 kg)

3i-221710BM1

i series

Form cut foam fits the Blackmagic Design ATEM Camera Control Panel, ATEM 1 M/E Advanced Panel, or the DaVinci Resolve Mini Panel

EXTERIOR (L x W x D)

24.5" x 19.37" x 12.22"
(62.23 x 49.2 x 31.04 cm)

WEIGHT

19.5 lbs
(8.85 kg)

3i-1813-5NT

i series

Features a custom padded Think Tank-designed interior with a rigid removable flap that protects your laptop during transit and provides a sturdy work surface when in use. A heavy-duty hook-and-loop strap secures the laptop in place along with positionable foam blocks that help provide a custom fit for all laptops up to 16". Underneath the laptop are two removable clear accessory pouches that accommodate power supplies, cables, and other items. There is also a handy lid organizer for storage of other small accessories.

Inside laptop dimensions are up to 15.125" x 9.7" x 1.25"

Lid organizer dimensions are 15" x 10" x 1.25"

Pouch dimensions are 7.5" x 5" x 1.5"

EXTERIOR (L x W x D)

19.68" x 15.18" x 5.46"
(49.99 x 38.56 x 13.87 cm)

WEIGHT

9.45 lbs
(4.29 kg)



Laptop under platform



Pouches under laptop

3i-2424-MACP

i series

Fits Mac Pro Tower (2019 or later models), with room for a keyboard with numeric keypad, track pad 2, mouse, and all necessary cables. The case also comes standard with TSA-retrofittable trigger latches, built-in quiet-glide wheels, and an easy-to-operate one-button pull handle for optimal convenience and functionality.

Keyboard pocket dims are 16.5" x 0.625" x 4.5"

Mouse pocket dims are 2.5" x 0.875" x 4.5"

Cable pocket dims are 11" x 1.75" x 6"

Track Pad 2 pocket dims are 6.25" x 0.375" x 4.5"

EXTERIOR (L x W x D)

26.5" x 26.54" x 15.65"
(67.31 x 67.41 x 39.75 cm)

WEIGHT

33.3 lbs
(15.1 kg)



3i-2922-IMAC

i series

Fits a 27" iMacs (2014 or later models), with room for a keyboard, mouse, and all necessary cables

EXTERIOR (L x W x D)

31.75" x 24.6" x 12.18"
(80.65 x 62.48 x 30.94 cm)

WEIGHT

29.8 lbs
(13.52 kg)



3i-18135SNSC

i series

Sun Screen stores in the lid and up to 17" laptop in the base

EXTERIOR (L x W x D)

19.68" x 15.18" x 5.46"
(49.99 x 38.56 x 13.87 cm)

WEIGHT

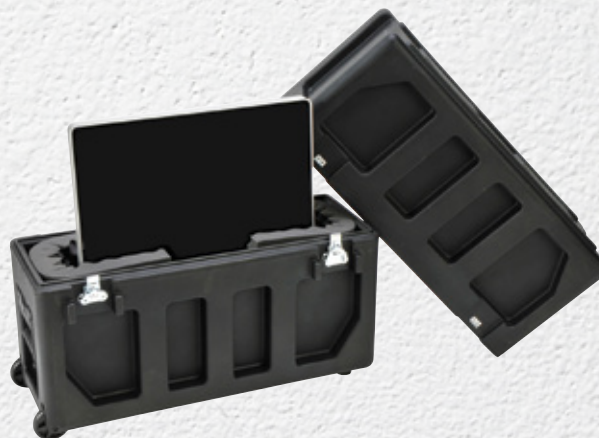
7.6 lbs
(3.45 kg)



19

FLAT SCREEN TRANSPORT CASES

Flat Screen Transport Cases are rotationally molded for maximum impact resistance to protect large flat screen monitors, and feature convenient corner wheels for tilting and easy transport.



MODEL NUMBER	FEATURES	EXTERIOR (L X W X D)	WEIGHT
3SKB-2026	Accommodates 20" to 26" Flat Screen Monitors	34.5" x 13" x 30" (87.63 x 33.02 x 76.2 cm)	36.85 lbs (16.71 kg)
3SKB-3237	Accommodates 32" to 37" Flat Screen Monitors	42" x 13" x 34.5" (106.68 x 33.02 x 87.63 cm)	41.5 lbs (18.82 kg)
3SKB-4250	Accommodates 42" to 50" Flat Screen Monitors	52.5" x 13.5" x 36.73" (133.35 x 34.29 x 93.29 cm)	60 lbs (27.22 kg)
3SKB-5260	Accommodates 52" to 60" Flat Screen Monitors	63" x 16" x 50.25" (160.02 x 40.64 x 127.64 cm)	129.1 lbs (58.56 kg)

3i0806-3-R0D

i series

Form cut for RodeLink Wireless System

EXTERIOR (L x W x D)9.41" x 7.82" x 4.35"
(23.9 x 19.8 x 11 cm)**WEIGHT**1.65 lbs
(0.74 kg)

3i0705-3-XSW

i series

Form cut for Canon Prime Lenses

EXTERIOR (L x W x D)21.93" x 13.98" x 9"
(55.7 x 35.51 x 22.86 cm)**WEIGHT**9.4 lbs
(4.26 kg)

3i0806-3-AVX

i series

Form cut for Sennheiser AVX transmitter, receiver, lav mic, and other accessories

EXTERIOR (L x W x D)24.32" x 15.5" x 14.38"
(61.77 x 42.55 x 36.53 cm)**WEIGHT**19 lbs
(8.62 kg)

3i0907-4-SWK

i series

Fits the Sennheiser EW Wireless Mic Series including a wireless plug-on transmitter, wireless body pack transmitter, wireless body pack receiver with an extra spot for a lavalier microphone, and additional accessories

EXTERIOR (L x W x D)

10.73" x 9.69" x 4.8"
(27.25 x 24.61 x 12.19 cm)

WEIGHT

2.8 lbs
(1.27 kg)



3i0907-4B-01

i series

Fits the Zoom H4N recorder, with pockets for the recorder, power supply, wind screens, memory cards and other accessories

EXTERIOR (L x W x D)

10.73" x 9.69" x 4.8"
(27.25 x 24.61 x 12.19 cm)

WEIGHT

2.6 lbs
(1.18 kg)



3i-0907-4-H5

i series

Fits the Zoom H5 recorder with space for the H5 recorder as well as an open pocket for additional accessories

EXTERIOR (L x W x D)

10.73" x 9.69" x 4.8"
(27.25 x 24.61 x 12.19 cm)

WEIGHT

2.8 lbs
(1.27 kg)



3i-0907-4-H6

i series

Fits the Zoom H6 recorder with space for the XYH-6 X/Y mic capsule, MSH-6 MS mic capsule, cables, memory cards, and additional accessories

EXTERIOR (L x W x D)

10.73" x 9.69" x 4.8"
(27.25 x 24.61 x 12.19 cm)

WEIGHT

2.8 lbs
(1.27 kg)



3i-1209-4-H6B

i series

Fits the Zoom H6 recorder with space for the XYH-6 X/Y mic capsule, MSH-6 MS mic capsule, SGH-6 or SSH-6 Shotgun mic capsule, EXH-6 Dual XLR/TRS Combo capsule, windscreen, memory cards, cables, and additional accessories

EXTERIOR (L x W x D)

13.18" x 11.12" x 5.21"
(33.48 x 28.24 x 13.23 cm)

WEIGHT

3.6 lbs
(1.63 kg)



3i-1208-3-H8

i series

Fits the Zoom H8 and XYH-6 X/Y mic capsule, SGH-6 Shotgun mic capsule, and two memory cards, with space for additional capsules, short cables, or other small accessories

EXTERIOR (L x W x D)

12.86" x 9.7" x 3.8"
(32.66 x 24.64 x 9.65 cm)

WEIGHT

2.87 lbs
(1.3 kg)



STUDIO FLYERS

- World's first injection molded waterproof studio rack cases
- Lighter, stronger, and more affordable than previous Studio Flyers
- Front and rear molded-in square rack rails pre-installed with cage nuts
- Improved quiet-glide wheels
- Easy-to-operate pull handle
- Made in the USA
- Unconditional Lifetime Warranty

1SKB-iSF2U

i seriesApproved airline
carry-on size

19" x 11" laptop work surface

TOP PLATFORM19" x 11"
(48.26 x 27.94 cm)**RAIL-TO-RAIL DEPTH**

11.46" (29.11 cm)

WEIGHT

15.2 lbs (6.89 kg)

RACK UNITS

2U

EXTERIOR (D x W x H)14" x 22.25" x 9.5"
(35.56 x 56.52 x 24.13 cm)

ALSO AVAILABLE

MODEL NUMBER	DESCRIPTION	USABLE SPACE
1SKB-iSF4U	Injection molded 4U Studio Flyer Rack Case	24" x 18.5" x 12.75" (60.96 x 46.99 x 32.39 cm)



23

TECH BOX

The perfect solution for storing and transporting your delicate electronics, photo/video equipment, microphones, mixers, cables, computers, or percussion and music accessories.

3i-2011-7B-TR

i series

iSeries Tech Box with pull-out handle and wheels

INTERIOR (L x W x D)20.38" x 11.44" x 7.5"
(51.77 x 29.06 x 19.05 cm)**EXTERIOR (L x W x D)**21.89" x 13.96" x 9"
(55.6 x 35.46 x 22.86 cm)**WEIGHT**

20.4 lbs (9.25 kg)



INJECTION MOLDED WATERPROOF CASES

SKB iSeries cases are watertight, dustproof, and provide optimal strength, durability, and customizability to suit every application.

- Lighter and 2.8x stronger than the competition's cases
- Watertight and dustproof
- Meets Military Standards and manufactured to withstand the toughest conditions
- Lifetime Warranty
- Resistant to impact damage, UV, solvents, corrosion, and fungus (MIL-STD-810F)
- 100% Made in the USA and fully warranted for the life of the case to the original owner

* For more information about replacement foam, please visit skbcases.com

i series

**MILITARY
APPROVED**



PULL HANDLE



Convenient pull handle with easy push button release

TRIGGER LATCHES



Easy-to-operate trigger latches and reinforced padlock hoops





PRESSURE VALVE



Automatic ambient pressure relief valve

MODEL NUMBER KEY

3i-2317-14

 iSeries	 Interior Width
 Interior Length	 Interior Total Depth



WHEELS



Quiet-glide, skate-style wheels

CUBED FOAM

Layers of cubed foam
for customization *

PADDED DIVIDER

High contrast ThinkTank
padded divider interiors

MODEL NUMBER	INTERIOR (L x W x H)	EXTERIOR (L x W x H)	LID DEPTH	BASE DEPTH	WEIGHT EMPTY	PULL HANDLE/WHEELS	PHOTO DIVIDERS	CUBED FOAM	LAYERED FOAM	LID ORGANIZER	VIDEO DIVIDERS
3i-0702-1	7.76" x 2.15" x 1.3" (19.71 x 5.46 x 3.3 cm)	8.63" x 3.14" x 1.56" (21.92 x 7.98 x 3.96 cm)	0.65" (1.65 cm)	0.65" (1.65 cm)	0.33 lbs (0.15 kg)				X		
3i-0705-3	7.5" x 5" x 3.25" (19.05 x 12.7 x 8.26 cm)	8.36" x 6.7" x 3.83" (21.23 x 17.02 x 9.73 cm)	0.5" (1.27 cm)	2.75" (6.99 cm)	1.13 lbs (0.51 kg)			X			
3i-0806-3	8.5" x 6" x 3.75" (21.59 x 15.24 x 9.53 cm)	9.41" x 7.82" x 4.35" (23.9 x 19.86 x 11.05 cm)	0.5" (1.27 cm)	3.25" (8.26 cm)	1.63 lbs (0.74 kg)			X			
3i-0907-4	9.5" x 7.38" x 4.13" (24.13 x 18.75 x 10.49 cm)	10.73" x 9.69" x 4.8" (27.25 x 24.61 x 12.19 cm)	1.19" (3.02 cm)	2.94" (7.47 cm)	2.57 lbs (1.17 kg)		X	X	X		
3i-0907-6	9.38" x 7.38" x 6.13" (23.83 x 18.75 x 15.57 cm)	10.68" x 9.69" x 6.82" (27.13 x 24.61 x 17.32 cm)	1.19" (3.02 cm)	4.94" (12.55 cm)	2.88 lbs (1.31 kg)		X	X	X		
3i-1006-3	10.75" x 6.13" x 3.25" (27.31 x 15.57 x 8.26 cm)	11.72" x 8" x 3.86" (29.77 x 20.32 x 9.8 cm)	0.5" (1.27 cm)	2.75" (6.99 cm)	1.96 lbs (0.89 kg)			X			
3i-1208-3	12" x 8" x 3.25" (30.48 x 20.32 x 8.26 cm)	12.86" x 9.7" x 3.8" (32.66 x 24.64 x 9.65 cm)	0.5" (1.27 cm)	2.75" (6.99 cm)	2.12 lbs (0.96 kg)			X			
3i-1209-4	12" x 9" x 4.5" (30.48 x 22.86 x 11.43 cm)	13.18" x 11.12" x 5.21" (33.48 x 28.24 x 13.23 cm)	1.5" (3.81 cm)	3" (7.62 cm)	3 lbs (1.36 kg)		X	X	X		
3i-1309-6	13.5" x 9.5" x 6.5" (34.29 x 24.13 x 16.51 cm)	14.73" x 11.94" x 7.31" (37.41 x 30.33 x 18.57 cm)	1.5" (3.81 cm)	5" (12.7 cm)	4.75 lbs (2.15 kg)		X	X		X	
3i-1510-4	15" x 10.5" x 4.5" (38.1 x 26.67 x 11.43 cm)	16.25" x 13" x 5.3" (41.28 x 33.02 x 13.46 cm)	1.6" (4.06 cm)	3.7" (9.4 cm)	4.63 lbs (2.1 kg)		X	X		X	
3i-1510-6	15" x 10.5" x 6" (38.1 x 26.67 x 15.24 cm)	16.24" x 12.94" x 6.78" (41.25 x 32.87 x 17.22 cm)	1.7" (4.32 cm)	4.3" (10.92 cm)	5.19 lbs (2.35 kg)		X	X	X	X	
3i-1510-9	15" x 10.5" x 9" (38.1 x 26.67 x 22.86 cm)	16.25" x 13" x 9.8" (41.28 x 33.02 x 24.89 cm)	1.75" (4.45 cm)	7.25" (18.42 cm)	6.07 lbs (2.75 kg)			X		X	
3i-1515-6	15" x 15" x 6.5" (38.1 x 38.1 x 16.51 cm)	17.5" x 17.61" x 7.31" (44.45 x 44.73 x 18.57 cm)	2" (5.08 cm)	4.5" (11.43 cm)	7.17 lbs (3.25 kg)		X	X			X
3i-1610-5	16" x 10" x 5.5" (40.64 x 25.4 x 13.97 cm)	17.17" x 12.17" x 6.21" (43.61 x 30.91 x 15.77 cm)	2" (5.08 cm)	3.5" (8.89 cm)	5.23 lbs (2.37 kg)		X	X	X		
3i-1610-10	16" x 10" x 10" (40.64 x 25.4 x 25.4 cm)	17.38" x 12.54" x 11.68" (44.15 x 31.85 x 29.67 cm)	2.71" (6.89 cm)	8.97" (22.78 cm)	7.26 lbs (3.29 kg)		X	X			X
3i-1706-6	17" x 6.5" x 6.5" (43.18 x 16.51 x 16.51 cm)	18.2" x 8.98" x 7.3" (46.23 x 22.81 x 18.54 cm)	2" (5.08 cm)	4.5" (11.43 cm)	4.78 lbs (2.17 kg)		X	X			
3i-1711-6	17" x 11.5" x 6.16" (43.18 x 29.21 x 15.65 cm)	18.32" x 13.96" x 6.95" (46.53 x 35.46 x 17.65 cm)	1.84" (4.67 cm)	4.32" (10.97 cm)	5.91 lbs (2.68 kg)		X	X	X		
3i-1717-10	17" x 17" x 10" (43.18 x 43.18 x 25.4 cm)	19.5" x 19.7" x 10.9" (49.53 x 50.04 x 27.69 cm)	2" (5.08 cm)	8" (20.32 cm)	10.47 lbs (4.75 kg)			X			
3i-1717-16	17" x 17" x 16" (43.18 x 43.18 x 40.64 cm)	19.46" x 19.62" x 16.86" (49.43 x 49.83 x 42.82 cm)	2" (5.08 cm)	14" (35.56 cm)	13.87 lbs (6.29 kg)			X			
3i-1813-5	18.5" x 13" x 4.79" (46.99 x 33.02 x 12.17 cm)	19.7" x 15.48" x 5.58" (50.04 x 39.32 x 14.17 cm)	1.53" (3.89 cm)	3.26" (8.28 cm)	5.8 lbs (2.63 kg)		X	X	X	X	
3i-1813-7	18.52" x 13.02" x 7.06" (47.04 x 33.07 x 17.93 cm)	19.82" x 15.5" x 7.88" (50.34 x 39.37 x 20.02 cm)	1.52" (3.86 cm)	5.54" (14.07 cm)	7.71 lbs (3.5 kg)		X	X		X	
3i-1914-8	19.02" x 14.52" x 8.02" (48.31 x 36.88 x 20.37 cm)	21.45" x 17.01" x 9.62" (54.48 x 43.21 x 24.43 cm)	2.02" (5.13 cm)	6" (15.24 cm)	13.19 lbs (5.98 kg)	X	X	X	X		
3i-1914N-8	19" x 14.5" x 8" (48.26 x 36.83 x 20.32 cm)	20.25" x 16.93" x 8.78" (51.44 x 43 x 22.3 cm)	2" (5.08 cm)	6" (15.24 cm)	8.17 lbs (3.71 kg)		X	X			
3i-2011-7	20.53" x 11.53" x 7.51" (52.15 x 29.29 x 19.08 cm)	21.89" x 13.96" x 9" (55.6 x 35.46 x 22.86 cm)	2.09" (5.31 cm)	5.42" (13.77 cm)	11.2 lbs (5.08 kg)	X	X	X		X	
3i-2011-8	20.53" x 11.53" x 8.24" (52.15 x 29.29 x 20.93 cm)	21.93" x 13.98" x 9" (55.7 x 35.51 x 22.86 cm)	2" (5.08 cm)	6.24" (15.85 cm)	7.97 lbs (3.62 kg)		X	X		X	
3i-2011-10	20" x 11.5" x 10.56" (50.8 x 29.21 x 26.82 cm)	22" x 14" x 12" (55.88 x 35.56 x 30.48 cm)	2.06" (5.23 cm)	8.5" (21.59 cm)	12.75 lbs (5.78 kg)	X		X			
3i-2015-7	20.53" x 15.53" x 7.56" (52.15 x 39.45 x 19.2 cm)	22.27" x 17.98" x 8.32" (56.57 x 45.67 x 21.13 cm)	2" (5.08 cm)	5.56" (14.12 cm)	9.27 lbs (4.2 kg)		X	X		X	
3i-2015-10	20.53" x 15.53" x 10.06" (52.15 x 39.45 x 25.56 cm)	22.92" x 17.98" x 11.55" (58.22 x 45.67 x 29.34 cm)	2.06" (5.23 cm)	8" (20.32 cm)	14.27 lbs (6.47 kg)	X	X	X		X	X
3i-2213-12	22" x 13" x 12" (55.88 x 33.02 x 30.48 cm)	24.18" x 15.52" x 13.65" (61.42 x 39.42 x 34.67 cm)	2" (5.08 cm)	12" (30.48 cm)	16.32 lbs (7.4 kg)	X	X	X		X	X
3i-2215-8	22" x 15.5" x 8" (55.88 x 39.37 x 20.32 cm)	24.58" x 18" x 9.65" (62.43 x 45.72 x 24.51 cm)	2" (5.08 cm)	8" (20.32 cm)	16.02 lbs (7.27 kg)	X	X	X			
3i-2217-8	22" x 17" x 8" (55.88 x 43.18 x 20.32 cm)	24.32" x 19.5" x 8.86" (61.78 x 49.53 x 22.5 cm)	2" (5.08 cm)	6" (15.24 cm)	11.12 lbs (5.04 kg)		X	X		X	

MODEL NUMBER	INTERIOR (L x W x H)	EXTERIOR (L x W x H)	LID DEPTH	BASE DEPTH	WEIGHT EMPTY	PULL HANDLE/WHEELS	PHOTO DIVIDERS	CUBED FOAM	LAYERED FOAM	LID ORGANIZER	VIDEO DIVIDERS
3i-2217-10	22" x 17" x 10.62" (55.88 x 43.18 x 26.97 cm)	24.5" x 19.37" x 12.22" (62.23 x 19.37 x 31.04 cm)	2" (5.08 cm)	8.62" (21.89 cm)	17.49 lbs (7.93 kg)	X	X	X		X	X
3i-2217-12	22" x 17" x 12.75" (55.88 x 43.18 x 32.39 cm)	24.34" x 19.47" x 14.38" (61.82 x 49.45 x 36.53 cm)	2" (5.08 cm)	10.75" (27.31 cm)	18.57 lbs (8.42 kg)	X	X	X		X	X
3i-2222-12	22.52" x 22.52" x 12.5" (57.2 x 57.2 x 31.75 cm)	24.81" x 24.98" x 14.15" (63.02 x 63.45 x 35.94 cm)	2" (5.08 cm)	10.47" (26.59 cm)	21.8 lbs (9.89 kg)	X	X	X			
3i-2317-14	23" x 17" x 14" (58.42 x 43.18 x 35.56 cm)	25.58" x 19.47" x 15.68" (64.97 x 49.45 x 39.83 cm)	2" (5.08 cm)	11.5" (29.21 cm)	20.8 lbs (9.43 kg)	X		X			
3i-2421-7	24.12" x 21" x 7" (61.26 x 53.34 x 17.78 cm)	26.21" x 23.52" x 8.65" (66.57 x 59.74 x 21.97 cm)	2" (5.08 cm)	5" (12.7 cm)	18.85 lbs (8.55 kg)	X		X			
3i-2424-10	24" x 24" x 10" (60.96 x 60.96 x 25.4 cm)	26.5" x 26.56" x 11.65" (67.31 x 67.46 x 29.59 cm)	2" (5.08 cm)	8" (20.32 cm)	23.59 lbs (10.7 kg)	X		X			
3i-2424-14	24" x 24" x 14" (60.96 x 60.96 x 35.56 cm)	26.5" x 26.54" x 15.65" (67.31 x 67.41 x 39.75 cm)	2" (5.08 cm)	12" (30.48 cm)	25.39 lbs (11.52 kg)	X		X			
3i-2615-10	26" x 15" x 10" (66.04 x 38.1 x 25.4 cm)	28.6" x 17.55" x 11.65" (72.64 x 44.58 x 29.59 cm)	2" (5.08 cm)	8" (20.32 cm)	19 lbs (8.62 kg)	X		X			
3i-2617-12	26.08" x 17.5" x 12" (66.24 x 44.45 x 30.48 cm)	26.6" x 20" x 13.65" (67.56 x 50.8 x 34.67 cm)	2" (5.08 cm)	10" (25.4 cm)	20.89 lbs (9.48 kg)	X	X	X			
3i-2914-15	29" x 14" x 15" (73.66 x 35.56 x 38.1 cm)	32.08" x 16.68" x 15.87" (81.48 x 42.37 x 40.31 cm)	2" (5.08 cm)	13" (33.02 cm)	20.18 lbs (9.15 kg)	X		X			
3i-2918-10	29" x 18" x 10.85" (73.66 x 45.72 x 27.56 cm)	31.52" x 20.53" x 12.5" (80.06 x 52.15 x 31.75 cm)	2" (5.08 cm)	8.85" (22.48 cm)	22.13 lbs (10.04 kg)	X	X	X			
3i-2918-14	29" x 18" x 14" (73.66 x 45.72 x 35.56 cm)	31.52" x 20.53" x 15.7" (80.06 x 52.15 x 39.88 cm)	2.5" (6.35 cm)	11.5" (29.21 cm)	24.2 lbs (10.98 kg)	X		X			
3i-2922-10	29" x 22" x 10.52" (73.66 x 55.88 x 26.72 cm)	31.75" x 24.6" x 12.18" (80.65 x 62.48 x 30.94 cm)	2.02" (5.13 cm)	8.5" (21.59 cm)	26.81 lbs (12.16 kg)	X		X			
3i-2922-16	29" x 22" x 16" (73.66 x 55.88 x 40.64 cm)	31.94" x 24.54" x 16.87" (81.13 x 62.33 x 42.85 cm)	2" (5.08 cm)	14" (35.56 cm)	28.25 lbs (12.81 kg)	X		X			
3i-3016-10	30" x 16" x 10" (76.2 x 40.64 x 25.4 cm)	32.4" x 18.5" x 10.85" (82.3 x 46.99 x 27.56 cm)	2" (5.08 cm)	8" (20.32 cm)	17.58 lbs (7.97 kg)	X	X	X			
3i-3019-12	30.5" x 19.5" x 12" (77.47 x 49.53 x 30.48 cm)	33.42" x 22.04" x 12.87" (84.89 x 55.98 x 32.69 cm)	2" (5.08 cm)	10" (25.4 cm)	23.59 lbs (10.7 kg)	X		X			
3i-3021-18	30" x 21" x 18" (76.2 x 53.34 x 45.72 cm)	32.94" x 23.53" x 18.87" (83.67 x 59.77 x 47.93 cm)	2" (5.08 cm)	16" (40.64 cm)	29.93 lbs (13.58 kg)	X		X			
3i-3026-15	30.75" x 26" x 15.5" (78.11 x 66.04 x 39.37 cm)	33.71" x 28.53" x 16.37" (85.62 x 72.47 x 41.58 cm)	2" (5.08 cm)	13.5" (34.29 cm)	31.46 lbs (14.27 kg)	X		X			
3i-3424-12	34.5" x 24.5" x 12.75" (87.63 x 62.23 x 32.39 cm)	37.44" x 27.04" x 13.62" (95.1 x 68.68 x 34.59 cm)	2" (5.08 cm)	10.75" (27.31 cm)	29.94 lbs (13.58 kg)	X		X			
3i-3613-12	36" x 13.5" x 12" (91.44 x 34.29 x 30.48 cm)	38.67" x 16.05" x 12.84" (98.22 x 40.77 x 32.61 cm)	2" (5.08 cm)	10" (25.4 cm)	20.23 lbs (9.18 kg)	X	X		X		
3i-3614-6	36.5" x 14.5" x 6" (92.71 x 36.83 x 15.24 cm)	39.04" x 16.81" x 6.84" (99.16 x 42.7 x 17.37 cm)	1.5" (3.81 cm)	4.5" (11.43 cm)	15.39 lbs (6.98 kg)	X			X		
3i-3913-12	39.3" x 13.57" x 12.67" (99.82 x 34.47 x 32.18 cm)	42" x 16" x 14" (106.68 x 40.64 x 35.56 cm)	2" (5.08 cm)	10.67" (27.1 cm)	22.23 lbs (10.08 kg)	X			X		
3i-4213-12	42.5" x 13.5" x 12.15" (107.95 x 34.29 x 30.86 cm)	45.5" x 16.03" x 12.97" (115.57 x 40.72 x 32.94 cm)	2" (5.08 cm)	10.15" (25.78 cm)	22.8 lbs (10.34 kg)	X	X		X		
3i-4214-5	42.5" x 14.5" x 5.5" (107.95 x 36.83 x 13.97 cm)	44.96" x 16.98" x 6.34" (114.2 x 43.13 x 16.1 cm)	1.5" (3.81 cm)	4" (10.16 cm)	16.46 lbs (7.47 kg)	X			X		
3i-4217-7	42.49" x 17" x 7.52" (107.92 x 43.18 x 19.1 cm)	45.12" x 19.45" x 8.34" (114.6 x 49.4 x 21.18 cm)	2.05" (5.21 cm)	5.47" (13.89 cm)	20.4 lbs (9.25 kg)	X			X		
3i-4414-10	44.5" x 14.5" x 10" (113.03 x 36.83 x 25.4 cm)	47" x 17" x 10.84" (119.38 x 43.18 x 27.53 cm)	2" (5.08 cm)	8" (20.32 cm)	22.89 lbs (10.38 kg)	X	X		X		
3i-4719-8	47" x 19" x 8" (119.38 x 48.26 x 20.32 cm)	49.66" x 21.5" x 8.87" (126.14 x 54.61 x 22.53 cm)	2" (5.08 cm)	6" (15.24 cm)	24.03 lbs (10.9 kg)	X			X		
3i-4909-5	49" x 9" x 5" (124.46 x 22.86 x 12.7 cm)	50.35" x 11.54" x 5.84" (127.89 x 29.31 x 14.83 cm)	1.5" (3.81 cm)	3.5" (8.89 cm)	12.62 lbs (5.72 kg)				X		
3i-5014-6	50.5" x 14.5" x 6" (128.27 x 36.83 x 15.24 cm)	53.04" x 16.98" x 6.84" (134.72 x 43.13 x 17.37 cm)	1.5" (3.81 cm)	4.5" (11.43 cm)	18.73 lbs (8.5 kg)	X			X		
3i-5616-9	56" x 16" x 9" (142.24 x 40.64 x 22.86 cm)	58.71" x 18.55" x 10.63" (149.12 x 47.12 x 27 cm)	2" (5.08 cm)	7" (17.78 cm)	28.47 lbs (12.91 kg)	X			X		
3i-6018-8	60" x 18" x 8" (152.4 x 45.72 x 20.32 cm)	62.71" x 20.62" x 9.63" (159.28 x 52.37 x 24.46 cm)	2" (5.08 cm)	6" (15.24 cm)	28.59 lbs (12.97 kg)	X			X		



COLORED HANDLES

SMALL HANDLES

MODEL NUMBER	DESCRIPTION
3i-HD73-BE	Small handle, Blue overmold
3i-HD73-GN	Small handle, Green overmold
3i-HD73-OR	Small handle, Orange overmold
3i-HD73-RD	Small handle, Red overmold
3i-HD73-YW	Small handle, Yellow overmold



MEDIUM HANDLES

MODEL NUMBER	DESCRIPTION
3i-HD80-BE	Medium handle, Blue overmold
3i-HD80-GN	Medium handle, Green overmold
3i-HD80-OR	Medium handle, Orange overmold
3i-HD80-RD	Medium handle, Red overmold
3i-HD80-YW	Medium handle, Yellow overmold

LARGE HANDLES

MODEL NUMBER	DESCRIPTION
3i-HD81-BE	Large handle, Blue overmold
3i-HD81-GN	Large handle, Green overmold
3i-HD81-OR	Large handle, Orange overmold
3i-HD81-RD	Large handle, Red overmold
3i-HD81-YW	Large handle, Yellow overmold



PANEL MOUNTING RING KITS

Panel mounting rings enable attachment of an interface panel that's flush with the case rim, providing room for switches, buttons, ports, etc. Each kit comes with panel ring, drill jigs/templates, drill bit, rubber gasket, and mounting hardware.

MODEL NUMBER	DESCRIPTION
3i-0907-PRK	Fits: 3i-0907
3i-1006-PRK	Fits: 3i-1006
3i-1209-PRK	Fits: 3i-1209
3i-1309-PRK	Fits: 3i-1309
3i-1510-PRK	Fits: 3i-1510
3i-1610-5-PRK	Fits: 3i-1610-5
3i-1706-PRK	Fits: 3i-1706
3i-1711-PRK	Fits: 3i-1711
3i-1717-PRK	Fits: 3i-1717
3i-1813-PRK	Fits: 3i-1813
3i-1914-PRK	Fits: 3i-1914
3i-2011-PRK	Fits: 3i-2011
3i-2015-PRK	Fits: 3i-2015
3i-PMCK	iSeries Panel Mount Clip Kit



TSA LOCKING LATCHES

Transportation Security Administration (TSA) baggage screeners are trained to recognize the Travel Sentry logo on TSA-accepted locks, which allows them to open, inspect, and relock baggage.

MODEL NUMBER	DESCRIPTION
3i-TSA-1	Fits: 3i-0907-4, 3i-0907-6
3i-TSA-3	Fits: All other models



TSA LOCKS

SKB's TSA-accepted locks allow you to set your own combination and are easily recognizable by TSA screeners.

1SKB-PDL

TSA ACCEPTED PADLOCK



1SKB-PDL-C

TSA ACCEPTED CABLE LOCK



INJECTION MOLDED FLY RACKS

At less than half the weight of standard shock racks, SKB Fly Racks feature iSeries watertight injection molded cases that are the perfect solution for flying or shipping delicate equipment.



Injection molded rack shells



Front/back steel rails



Lid and interior foam



TSA accessible locking latches

i series


MODEL NUMBER	RACK UNITS	RAIL-TO-RAIL DEPTH	EXTERIOR (D X W X H)	WEIGHT
3i-2217M82U	2U (No wheels)	13" (33.02 cm)	24.32" x 19.5" x 8.86" (61.77 x 49.53 x 22.5 cm)	19 lbs (8.62 kg)
3i-2215M82U	2U	13" (33.02 cm)	24.58" x 18" x 9.65" (62.43 x 45.72 x 24.51 cm)	23 lbs (10.43 kg)
3i-2217M103U	3U	13" (33.02 cm)	24.5" x 19.37" x 12.22" (62.23 x 49.2 x 31.04 cm)	26.6 lbs (12.07 kg)
3i-2217M124U	4U	13" (33.02 cm)	24.34" x 19.47" x 14.38" (61.82 x 49.45 x 36.53 cm)	28 lbs (12.7 kg)
3i-2317M146U	6U	13" (33.02 cm)	25.63" x 19.5" x 15.63" (65.1 x 49.53 x 39.7 cm)	30.4 lbs (13.79 kg)
3i-2424M103U	3U	20" (50.8 cm)	26.5" x 26.56" x 11.65" (67.31 x 67.46 x 29.59 cm)	33.67 lbs (15.27 kg)
3i-2424M146U	6U	20" (50.8 cm)	26.5" x 26.56" x 15.65" (67.31 x 67.46 x 39.75 cm)	36.77 lbs (16.68 kg)

SHALLOW FLY RACKS

3i-2011M72U

i series



RACK UNITS

2U

RAIL-TO-RAIL DEPTH

9" (22.86 cm)

EXTERIOR (D x W x H)

21.89" x 13.96" x 9"
(55.6 x 35.46 x 22.86 cm)

WEIGHT

15.89 lbs (7.21 kg)



3i-2011M103U

i series



RACK UNITS

3U

RAIL-TO-RAIL DEPTH

9" (22.86 cm)

EXTERIOR (D x W x H)

22" x 14" x 12"
(55.88 x 35.56 x 30.48 cm)

WEIGHT

17.83 lbs (8.09 kg)



3i-2213M124U

i series



RACK UNITS

4U

RAIL-TO-RAIL DEPTH

9" (22.86 cm)

EXTERIOR (D x W x H)

24.18" x 15.52" x 13.65"
(61.42 x 39.42 x 34.67 cm)

WEIGHT

22.21 lbs (10.07 kg)



FLY RACKS

These fly racks are housed in our military grade iSeries waterproof cases and feature removable aluminum alloy rack cages with 11 gauge carbon steel rack rails.

3i-22221210U

i series 

Provides 10 units of rack space in a foam-protected waterproof iSeries case

RACK UNITS

10U

EXTERIOR (D x W x H)

22.5" x 22.5" x 12.5"
(57.15 x 57.15 x 31.75 cm)

RAIL-TO-RAIL DEPTH

10" (25.4 cm)

WEIGHT

36.4 lbs (16.51 kg)



3i-221710WMC

i series 

Provides 2 units of rack space and cut outs for 4 wireless hand held transmitters, 4 body pack transmitters, and additional accessories all in one case

RACK UNITS

2U

EXTERIOR (D x W x H)

24.5" x 19.37" x 12.22"
(62.23 x 49.2 x 31.04 cm)

RAIL-TO-RAIL DEPTH

13" (33.02 cm)

WEIGHT

25.35 lbs (11.5 kg)



3i-231714WMC

i series 

Features a 4U injection molded rack frame with space below for four wireless handheld transmitters and four body pack transmitters, with additional space for smaller accessories

RACK UNITS

4U

EXTERIOR (D x W x H)

25.75" x 19.5" x 15.5"
(65.41 x 49.53 x 39.37 cm)

RAIL-TO-RAIL DEPTH

13" (33.02 cm)

WEIGHT

30.46 lbs (13.82 kg)



ROTO AND ROTO SHALLOW RACKS

- Steel front/rear threaded rails
- Water resistant gasket in lids

- Stacks with other shallow racks or roto-molded standard depth racks

- Full front/rear doors

1SKB-R6S

RACK UNITS

6U

RAIL-TO-RAIL DEPTH

10.7" (27.17 cm)

EXTERIOR (D x W x H)

16.2" x 22.4" x 12.6"
(41.15 x 56.9 x 32 cm)

WEIGHT

17.4 lbs (7.9 kg)



MODEL NUMBER	RACK UNITS	RAIL-TO-RAIL DEPTH	EXTERIOR (D X W X H)	WEIGHT
1SKB-R2S	2U	10.7" (27.17 cm)	16.2" x 22.4" x 5.5" (41.15 x 56.9 x 13.97 cm)	9.2 lbs (4 kg)
1SKB-R3S	3U	10.7" (27.17 cm)	16.2" x 22.4" x 7.4" (41.15 x 56.9 x 18.8 cm)	10.4 lbs (4.7 kg)
1SKB-R4S	4U	10.7" (27.17 cm)	16.2" x 22.4" x 9" (41.15 x 56.9 x 22.86 cm)	12.8 lbs (5.8 kg)
1SKB-RCB	4-Caster Board			

A standard Rack Unit is 1.75" (4.445 cm) in height

1SKB-R4U

RACK UNITS

4U

RAIL-TO-RAIL DEPTH

17.6" (44.96 cm)

EXTERIOR (D x W x H)

24" x 22.4" x 9.7"
(60.96 x 56.9 x 24.64 cm)

WEIGHT

14.4 lbs (6.53 kg)



MODEL NUMBER	RACK UNITS	RAIL-TO-RAIL DEPTH	EXTERIOR (D X W X H)	WEIGHT
1SKB-R2U	2U	17.6" (44.96 cm)	24" x 22.4" x 6.2" (60.96 x 56.9 x 15.75 cm)	10.8 lbs (4.9 kg)
1SKB-R3U	3U	17.6" (44.96 cm)	24" x 22.4" x 7.6" (60.96 x 56.9 x 19.3 cm)	13.82 lbs (6.27 kg)
1SKB-R6U	6U	17.6" (44.96 cm)	24" x 22.4" x 13.2" (60.96 x 56.9 x 33.53 cm)	18.4 lbs (8.53 kg)
1SKB-R8U	8U	17.6" (44.96 cm)	24" x 22.4" x 16.7" (60.96 x 56.9 x 42.42 cm)	22.2 lbs (10.07 kg)
1SKB-R10U	10U	17.6" (44.96 cm)	24" x 22.4" x 20.2" (60.96 x 56.9 x 51.31 cm)	25.4 lbs (11.52 kg)
1SKB-R12U	12U	17.6" (44.96 cm)	24" x 22.4" x 23.7" (60.96 x 56.9 x 60.2 cm)	29.2 lbs (13.24 kg)
1SKB-RCB	4-Caster Board			

1SKB-H3611

INTERIOR (L x W x D)
36.75" x 11.75" x 7.75"
(93.35 x 29.85 x 19.69 cm)

WEIGHT
12 lbs
(5.5 kg)

1SKB-H4812W

INTERIOR (L x W x D)
49.25" x 11.25" x 11"
(125.1 x 28.58 x 27.94 cm)

WEIGHT
15 lbs
(7 kg)

1SKB-H4816W

INTERIOR (L x W x D)
48" x 16" x 12.25"
(121.92 x 40.64 x 31.12 cm)

WEIGHT
21.5 lbs
(9.75 kg)

1SKB-H5020W

INTERIOR (L x W x D)
49.75" x 20" x 13.375"
(126.37 x 50.8 x 33.97 cm)

WEIGHT
23 lbs
(10 kg)

3i-3613-12DT

INTERIOR (L x W x D)
35" x 12" x 10.5"
(88.9 x 30.48 x 26.67 cm)

WEIGHT
24.25 lbs
(11 kg)

3i-4213-12DT

INTERIOR (L x W x D)
40.5" x 12" x 10.5"
(102.87 x 30.48 x 26.67 cm)

WEIGHT
27.35 lbs
(12.41 kg)

ROTO-MOLDED TRIPOD CASES

Roto-Molded tripod cases are available in 8 sizes to accommodate every popular tripod and light stand from 29" to 50".



Heavy-duty web straps with sturdy high-tension slide release buckles



Flat areas on both sides for placement of shipping labels



Two molded-in ergonomic carrying handles



In-line skate style wheels for easy transport (see chart)



Integrated padlock loop for customer supplied lock



MODEL NUMBER	INTERIOR (TALL X DIAMETER)	EXTERIOR (L X W X D)	WEIGHT	WHEELS
1SKB-R2411	24" x 11" (60.96 x 27.94 cm)	27.25" x 12.75" x 14" (69.22 x 32.39 x 35.56 cm)	10.4 lbs (4.72 kg)	No
1SKB-R2907	29" x 7.5" (73.66 x 19.05 cm)	32.25" x 10.5" x 9.25" (81.92 x 26.67 x 23.5 cm)	7.6 lbs (3.45 kg)	No
1SKB-R3411W	34" x 11" (86.36 x 27.94 cm)	38.25" x 12.75" x 13.75" (97.16 x 32.39 x 34.93 cm)	15 lbs (6.8 kg)	Yes
1SKB-R3709W	37" x 9" (93.98 x 22.86 cm)	40.25" x 12.5" x 11" (102.24 x 31.75 x 27.94 cm)	11.6 lbs (5.26 kg)	Yes
1SKB-R4111W	41" x 11" (104.14 x 27.94 cm)	45.25" x 12.75" x 14" (114.94 x 32.39 x 35.56 cm)	17 lbs (7.71 kg)	Yes
1SKB-R4209W	42" x 9" (106.68 x 22.86 cm)	47.5" x 12.5" x 11" (120.65 x 31.75 x 27.94 cm)	12.8 lbs (5.81 kg)	Yes
1SKB-R4611W	46" x 11" (116.84 x 27.94 cm)	50.75" x 12.75" x 14" (128.91 x 32.39 x 35.56 cm)	16 lbs (7.26 kg)	Yes
1SKB-R5011W	50" x 11" (127 x 27.94 cm)	54.75" x 12.75" x 14" (139.07 x 32.39 x 35.56 cm)	16 lbs (7.26 kg)	Yes



SKB USA

434 W. Levers Place
Orange, CA 92867
ph: (714) 637-1252

www.skbcases.com

SKB EUROPE

Hamelendijk 2
5541 RA Reusel
Netherlands
ph: +31 (0) 497 339 836

www.skbcases.com

SKB MIDDLE EAST - AFRICA

Business Center
Dubai World Central
PO Box 390667
Dubai, UAE
sales@skbcases-mea.com

www.skbcases-mea.com

