



PRO AUDIO CASES



## TABLE OF CONTENTS

|   |                            |    |
|---|----------------------------|----|
|    | CONSTRUCTION METHODS       | 3  |
|    | GIG RIGS                   | 4  |
|    | COMPACT RIGS               | 6  |
|    | STUDIO FLYERS              | 7  |
|    | MIXER CONSOLE CASES        | 8  |
|    | MIXER CASES                | 9  |
|    | BOSE SPEAKER CASES         | 12 |
|    | BAGS & SOFT CASES          | 13 |
|    | DJ CASES                   | 14 |
|    | WIRED MIC CASES            | 16 |
|   | WIRELESS MIC CASES         | 17 |
|  | RECORDER CASES             | 18 |
|  | TRIPOD/STAND CASES         | 19 |
|  | iSERIES CASES              | 20 |
|  | FLYABLE CASES              | 24 |
|  | SPECIALTY CASES            | 25 |
|  | iSERIES ACCESSORIES        | 26 |
|  | R SERIES CASES             | 28 |
|  | RACK CASES                 | 30 |
|  | FLY RACKS                  | 32 |
|  | MILITARY-GRADE SHOCK RACKS | 35 |
|  | WARRANTY INFORMATION       | 39 |



### SKB OWNERS/FOUNDERS: DAVE SANDERSON & STEVE KOTTMAN

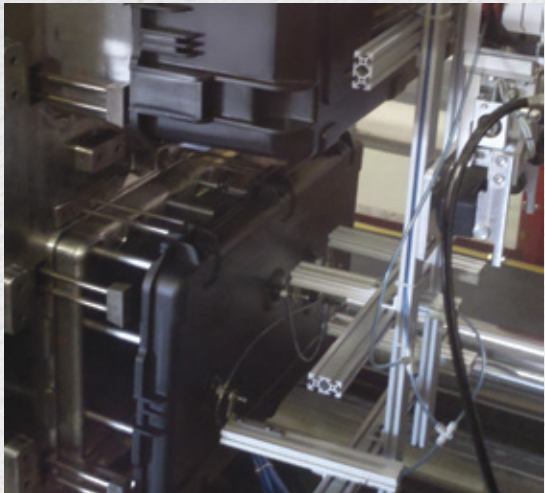


## OUR STORY

In 1977, two ambitious college students developed the first SKB case in a small Anaheim, California garage. What would eventually become the industry's premier lightweight molded guitar case was just the first of many innovations that have since cemented SKB's global reputation as a leading manufacturer of superior equipment transportation solutions. These solutions are helping diverse industries around the world—from music and photography to sports, aerospace, military, industrial, and beyond—to protect their livelihoods, build better products, and get the job done.

If our 40 years of steady growth have taught us anything, it's that we have our customers to thank for giving us the opportunity to excel; it's their challenges that have allowed us to develop and grow. We at SKB are grateful for the continued trust and loyalty of our customers, and we remain dedicated to the assurance that every case with an SKB logo has been manufactured with an unconditional commitment to unsurpassed quality.





One of our injection molders in action

## INJECTION MOLD

This is SKB's latest venture in our quest to provide the most innovative hard shell case products. Injection molding is an expensive investment that leaves no room for error. Made with extreme pressure, even the smallest injection molded part requires a very large and heavy mold (some of SKB's molds are nearly 20 tons!). The injection mold process produces many of our parts—such as our patented Trigger Latches—and our gasket-sealed waterproof iSeries cases are proving to be popular transport solutions for everyone from touring musicians to military personnel. Never before has an ATA flight case been so advanced and lightweight.



Molds rotating during production

## ROTO-MOLD

In 1997, SKB invested in roto-mold machinery. These molds are ideal for making large and cylindrical cases. The PE roto-mold material starts as a fine powder that is measured according to the size of the case. The material is then sealed up in a multi-piece aluminum mold, fixed on a biaxial rotating wheel, and heated to 800° in a very large oven while the mold constantly rotates. The powder melts and coats the inside of the mold and, after cooling, the cast is disassembled and the new case is removed. Roto-molding is great for providing maximum transport protection and impact resistance.



Vacuum mold for keyboard case

## VACUUM FORM

Also known as thermal form, this was the first and most recognized "SKB Style" case. This method is very popular for everything from guitar and band instrument cases to golf cases, rifle cases, and more. In 1990, SKB developed the first vacuum formed rack case. Acrylonitrile Butadiene Styrene (ABS) or Polyethylene (PE) is formed into solid sheets of material. The sheets are then heated and vacuum formed around aluminum castings, thus taking the shape of the mold. The edges have a distinctive aluminum valance that provides rigid construction as well as a secure fit. Vacuum formed products are known for their light weight and extreme durability.



## GIG RIGS

**STEP 1**

Gig Rig is lockable and stores/travels as a solid cube

**STEP 2**

The lid will be used as a pedestal

**STEP 3**

Attach lid to bottom caster skid

**STEP 4**

Attach mixer section to top of lid (puts mixer at proper height)

**1SKB19-R1406****MIGHTY GIG RIG**

- Rotationally molded of Linear Medium Density Polyethylene (LMDPE) for maximum impact resistance
- 14U+, 7° angled top threaded steel rails for secure mounting of popular mixers
- 6U threaded vertical steel rails on front and back
- Unique 3-piece design uses the top cover as a pedestal when attached to wheeled base

**TOP RACK**

14U

**VERTICAL FRONT RACK**

6U Front / 6U Back

**RAIL-TO-RAIL DEPTH**

26" (66.04 cm)

**EXTERIOR (D x W x H)**

32.25" x 24" x 26.5"  
(81.92 x 60.96 x 67.31 cm)

**WEIGHT**

55.5 lbs (25.17 kg)



4 over-molded, spring loaded handles for easy maneuvering

**1SKB19-R1208****GIG RIG**

- Rotationally molded of Linear Medium Density Polyethylene (LMDPE) for maximum impact resistance
- 12U+, 7° angled top threaded steel rails for secure mounting of popular mixers
- 8U threaded vertical steel rails on front and back
- Unique 3-piece design uses the top cover as a pedestal when attached to wheeled base

**TOP RACK**

12U

**VERTICAL FRONT RACK**

8U Front / 8U Back

**RAIL-TO-RAIL DEPTH**

19" (48.26 cm)

**EXTERIOR (D x W x H)**

27.5" x 23.5" x 29.5"  
(69.85 x 59.69 x 74.93 cm)

**WEIGHT**

68.6 lbs (31.12 kg)



Back of rack is 8" deep to accommodate back load mixers



## RACK EXPANDER

### 1SKB19-REX6

### THE MIGHTY GIG RIG EXPANDER

Add an additional 12U (6U front/ 6U back) for additional Gig Rig rack storage. Top lid of Expander is removable for complete cable access between Gig Rig and Expander.

#### FITS

1SKB19-R1406

#### VERTICAL FRONT RACK

6U Front / 6U Back

#### RAIL-TO-RAIL DEPTH

26" (66.04 cm)

#### EXTERIOR (D x W x H)

32.25" x 24" x 17.75"  
(81.92 x 60.96 x 45.08 cm)

#### WEIGHT

38.4 lbs (17.42 kg)



## ACCESSORIES

### 1SKB-AV8

### 8 SPACE AUDIO VIDEO SHELF



#### MATERIAL

Metal Shelf  
Metal Scissor Hinge

#### RACK UNIT REQUIRED

8U / 7° Top Rack

#### SURFACE (W x D)

17" x 11"  
(43.18 x 27.94 cm)

#### WEIGHT

6 lbs (2.72 kg)

### 1SKB-RE-TF1\*

### YAMAHA TF1 RACK EARS

#### MATERIAL

Metal Rack Ears for Yamaha  
TF1 Mixer

#### WEIGHT

1.2 lbs (0.54 kg)

### 1SKB-RE-SQ5\*

### ALLEN & HEATH SQ5 RACK EARS

#### MATERIAL

Metal Rack Ears for Allen &  
Heath SQ5 Mixer

#### WEIGHT

2.92 lbs (1.32 kg)



\* Check skbcases.com for compatible models



|   | MODEL NUMBER                       | MATERIAL                             | RACK UNIT REQUIRED | SURFACE (W x D)                       | WEIGHT               |
|---|------------------------------------|--------------------------------------|--------------------|---------------------------------------|----------------------|
| A | 1SKB-AV14<br>Only for 1SKB19-R1406 | Plastic Shelf<br>Metal Scissor Hinge | 14U<br>7° Top Rack | 16" x 16.5"<br>(40.64 x 41.91 cm)     | 6.8 lbs<br>(3.08 kg) |
| B | 1SKB-VS-2                          | Metal Shelf<br>Fixed                 | 8U<br>7° Top Rack  | 17.375" x 12.5"<br>(44.13 x 31.75 cm) | 4.5 lbs<br>(2.04 kg) |
| C | 1SKB-VS-1                          | Plastic Shelf<br>Pullout             | 2U<br>(Vertical)   | 16" x 16.5"<br>(40.64 x 41.91 cm)     | 7 lbs<br>(3.18 kg)   |



## COMPACT RIGS

- Rotationally molded of Linear Medium Density Polyethylene (LMDPE) for maximum impact resistance
- 10U, 7° angled top threaded steel rails for secure mounting of popular mixers/DJ controllers
- Top and doors are injection molded of Rubber Modified Styrene (RMS)
- 2U/4U/6U threaded vertical steel rails on front
- Two removable side access plugs



Side access ports  
for cable routing



1SKB-R1906 6U  
Compact Rig Expander



**ACCESSORIES**  
1SKB-AV8 Hook & Loop  
retract shelf for 7° rack mount



1SKB-VS-2 Fixed Hook & Loop  
rack shelf for 7° rack mount

## COMPACT RIGS

| MODEL NUMBER | TOP RACK | RACK UNITS          | EXTERIOR (D x W x H)                                | WEIGHT               |
|--------------|----------|---------------------|---|----------------------|
| 1SKB-R100    | 10U      | None                | 23.25" x 22.75" x 11.25" (59.05 x 59.69 x 28.58 cm) | 16.4 lbs (7.44 kg)   |
| 1SKB-R102    | 10U      | 2U                  | 23.25" x 23.5" x 14.5" (59.05 x 59.69 x 36.83 cm)   | 19.8 lbs (8.98 kg)   |
| 1SKB-R104    | 10U      | 4U                  | 23.25" x 23.5" x 17.75" (59.05 x 59.69 x 45.09 cm)  | 24 lbs (10.89 kg)    |
| 1SKB-R106    | 10U      | 6U                  | 23.25" x 23.5" x 21.25" (59.05 x 59.69 x 53.98 cm)  | 25.75 lbs (11.68 kg) |
| 1SKB-R1906   |          | 6U Front<br>6U Back | 26" x 25.5" x 15" (66.04 x 64.77 x 38.1 cm)         | 35.8 lbs (16.24 kg)  |

## ROLLING COMPACT RIGS (INCLUDES REAR RACK RAILS)

| MODEL NUMBER | TOP RACK | RACK UNITS | EXTERIOR (D x W x H)                                 | WEIGHT              |
|--------------|----------|------------|--|---------------------|
| 1SKB-R102W   | 10U      | 2U         | 27.75" x 23.25" x 15.625" (70.49 x 59.05 x 39.69 cm) | 30.1 lbs (13.65 kg) |
| 1SKB-R104W   | 10U      | 4U         | 27.75" x 23.25" x 19.125" (70.49 x 59.05 x 48.58 cm) | 34.3 lbs (15.56 kg) |
| 1SKB-R106W   | 10U      | 6U         | 27.75" x 23.25" x 22.625" (70.49 x 59.05 x 57.47 cm) | 46.1 lbs (20.91 kg) |



## STUDIO FLYERS

- World's first injection molded waterproof studio rack cases
- Lighter, stronger, and more affordable than previous Studio Flyers

- Front and rear molded-in square rack rails pre-installed with cage nuts
- Improved quiet-glide wheels

- Easy-to-operate pull handle
- Made in the USA
- Unconditional Lifetime Warranty

### 1SKB-iSF2U

### INJECTION MOLDED 2U STUDIO FLYER RACK CASE

**i series**



#### TOP PLATFORM

19" x 11"  
(48.26 x 27.94 cm)

#### EXTERIOR (D x W x H)

14" x 22.25" x 9.5"  
(35.56 x 56.52 x 24.13 cm)

#### RACK UNITS

2U

#### WEIGHT

15.2 lbs (6.89 kg)

#### RAIL-TO-RAIL DEPTH

11.46" (29.11 cm)



*Approved airline  
carry-on size*



### 1SKB-iSF4U

### INJECTION MOLDED 4U STUDIO FLYER RACK CASE

**i series**



#### TOP PLATFORM

21" x 15.5"  
(53.34 x 39.37 cm)

#### EXTERIOR (D x W x H)

24" x 18.5" x 12.75"  
(60.96 x 46.99 x 32.39 cm)

#### RACK UNITS

4U

#### WEIGHT

22.15 lbs (10.05 kg)

#### RAIL-TO-RAIL DEPTH

15" (38.1 cm)





## MIXER CONSOLE CASES

SKB has designed a line of mixer cases for four of the most popular 32-channel mixers in the market. The 1RMX32-DHW, fits the Behringer X32 mixer, the 1RMQU32-DHW fits the Allen & Heath QU32, the 1RMTF5-DHW fits the Yamaha TF5 and the 1RMM32-DHW fits the Midas M32 mixer. All four roto-molded cases include a large rubber gasket in the lids to keep rain and moisture out. Overall weight is lighter than equivalent road cases while providing superior protection.



4" heavy-duty casters, large butterfly latches, and six spring loaded handles



Double wall construction with custom foam blocks



Easy access hinged doghouse



Custom foam interior for each model

## 1RMX32-DHW

## ROTO-MOLDED BEHRINGER X32 MIXER CASE WITH WHEELS

Fits the Behringer X32.

**PROCESS**

Roto-Molded

**EXTERIOR (L x W x D)**

41" x 34" x 14.25"  
(104.14 x 86.36 x 36.2 cm)

**WEIGHT**

74 lbs (33.57 kg)



## 1RMM32-DHW

## ROTO-MOLDED MIDAS M32 MIXER CASE WITH WHEELS

Fits the Midas M32.

**PROCESS**

Roto-Molded

**EXTERIOR (L x W x D)**

44.25" x 35.75" x 14.25"  
(112.4 x 90.81 x 37.47 cm)

**WEIGHT**

90 lbs (40.82 kg)





3i1813-7-RCP

## iSERIES RODECASTER PRO PODCAST MIXER COMPACT CASE

**i series**

Fits RODECaster Pro Podcast Mixer, with cavities for two Rode PodMics and other accessories.

**PROCESS**

Injection Molded

**EXTERIOR (L x W x D)**

19.82" x 15.5" x 7.88"  
(50.34 x 39.37 x 20.02 cm)

**WEIGHT**

8.92 lbs (4.05 kg)



9

3i221710-RCP

## iSERIES WATERPROOF RODECASTER PRO PODCAST MIXER ULTIMATE CASE

**i series**

Fits the RODECaster Pro Podcast Mixer with room for four RODE PodMics and accessories.

**PROCESS**

Injection Molded

**EXTERIOR (L x W x D)**

24.5" x 19.37" x 12.22"  
(62.23 x 49.2 x 35.94 cm)

**WEIGHT**

20.35 lb (9.23 kg)





3i0705-3-P4

## iSERIES ZOOM PODTRAK P4 CASE

**i series**

Features a high quality foam interior that has been form-cut to fit the Zoom PodTrak P4 with a pocket below to store the usb charging cable and other small accessories.

**PROCESS**

Injection Molded

**EXTERIOR (L x W x D)**

8.38" x 6.75" x 3.75"  
(21.29 x 17.15 x 9.53 cm)

**WEIGHT**

1.22 lb (0.55 kg)



3i1711-6-P8

## iSERIES ZOOM PODTRAK P8 CASE

**i series**

Features a high quality foam interior that has been form-cut to fit the PodTrak P8 with a large accessory pocket below to house the power supply, mic cables, adapters, and other accessories.

**PROCESS**

Injection Molded

**EXTERIOR (L x W x D)**

18.25" x 13.79" x 6.81"  
(46.36 x 35.03 x 17.3 cm)

**WEIGHT**

6.69 lb (3.03 kg)





## 3i1813-7-TMIX

## iSERIES WATERTIGHT TOUCHMIX CASE

**i series** 

Provides superior protection for QSC's popular TouchMix-8 or the TouchMix-16 mixers. A custom cutout provides space for the power supply while the lower part of the case accommodates a standard or mini iPad.

**PROCESS**

Injection Molded

**EXTERIOR (L x W x D)**

19.88" x 15.5" x 7.88"  
(50.48 x 39.37 x 20 cm)

**WEIGHT**

8.82 lb (4 kg)



## 3i2222-12SQ5

## iSERIES ALLEN &amp; HEATH SQ5 MIXER CASE

**i series** 

Fits the Allen & Heath SQ5 Digital Mixer with room below for accessories.

**PROCESS**

Injection Molded

**EXTERIOR (L x W x D)**

24.81" x 24.98" x 14.15"  
(63.02 x 63.45 x 35.94 cm)

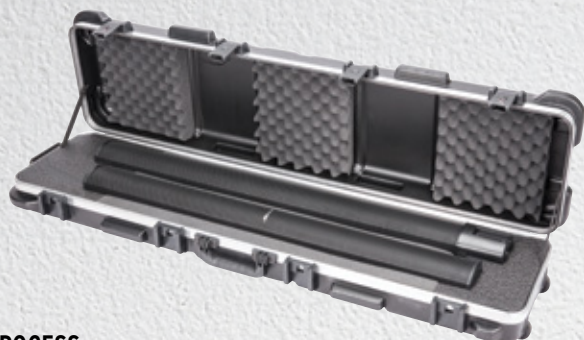
**WEIGHT**

24.4 lbs (11.07 kg)



| MODEL NUMBER | PROCESS               | EXTERIOR (L x W x D)                                | WEIGHT               |
|--------------|-----------------------|---|----------------------|
| 3i2222-12QSC | Injection Molded      | 24.81" x 24.98" x 14.15" (63.02 x 63.45 x 35.94 cm) | 26.4 lbs (11.97 kg)  |
| 1SKB19-R1400 | Roto-Molded 14U+ Rack | 29.5" x 24" x 12.25" (74.93 x 60.96 x 31.11 cm)     | 24.55 lbs (11.14 kg) |
| 3i2922-10SQ6 | Injection Molded      | 31.75" x 24.6" x 12.18" (80.65 x 62.48 x 30.94 cm)  | 29.16 lbs (13.23 kg) |
| 1R2723-8BW   | Roto-Molded           | 33.5" x 28.5" x 10.5" (85.09 x 72.39 x 26.67 cm)    | 32.2 lbs (14.61 kg)  |
| 3i3424-12SQ7 | Injection Molded      | 37.44" x 27.04" x 13.62" (95.1 x 68.68 x 34.59 cm)  | 34.6 lbs (15.69 kg)  |



**1SKB-5009BL****BOSE L1 & L1 MODEL II  
SPEAKER CASE****PROCESS**

Vacuum-Formed

**EXTERIOR (L x W x D)**55" x 15" x 8"  
(139.7 x 38.1 x 20.32 cm)**WEIGHT**

20 lbs (9.07 kg)

**1SKB-4009BP****BOSE L1 MODEL II POWER  
STAND/AUDIO ENGINE CASE****PROCESS**

Vacuum-Formed

**EXTERIOR (L x W x D)**45" x 15.25" x 9.5"  
(114.3 x 38.74 x 24.13 cm)**WEIGHT**

18 lbs (8.16 kg)

**3i-2922-16BF****iSERIES WATERPROOF BOSE F1 812  
LOUDSPEAKER CASE*****i series*****PROCESS**

Injection Molded

**EXTERIOR (L x W x D)**31.94" x 24.54" x 16.87"  
(81.13 x 62.33 x 42.85 cm)**WEIGHT**

33.2 lbs (15.06 kg)

**3i-2922-16B2****iSERIES WATERPROOF BOSE B2  
SUBWOOFER CASE*****i series*****PROCESS**

Injection Molded

**EXTERIOR (L x W x D)**31.94" x 24.54" x 16.87"  
(81.13 x 62.33 x 42.85 cm)**WEIGHT**

31.6 lbs (14.33 kg)

**3i-3021-18BS****iSERIES 3021-18BS WATERPROOF BOSE F1 SUBWOOFER CASE*****i series*****PROCESS**

Injection Molded

**EXTERIOR (L x W x D)**32.94" x 23.53" x 18.87"  
(83.67 x 59.77 x 47.93 cm)**WEIGHT**

31.4 lbs (14.24 kg)



## UNIVERSAL BAGS

- 600 Denier exterior
- Heavy-duty dual zippers
- Adjustable padded shoulder strap
- Double stitched carrying handle
- Convenient padded exterior accessory compartment for iPad or cables

## 1SKB-UB0909

## UNIVERSAL EQUIPMENT/MIXER BAG

**INTERIOR (H x W x D)**  
9" x 9" x 2.75"  
(22.86 x 22.86 x 6.99 cm)

**WEIGHT**  
1.4 lbs (0.64 kg)



## 1SKB-UB1212

## UNIVERSAL EQUIPMENT/MIXER BAG

**INTERIOR (H x W x D)**  
12" x 12" x 4"  
(30.48 x 30.48 x 10.16 cm)

**WEIGHT**  
1.6 lbs (0.73 kg)



| MODEL NUMBER | INTERIOR (H x W x D)                        | WEIGHT            |
|--------------|---|-------------------|
| 1SKB-UB1515  | 15" x 15" x 5" (38.1 x 38.1 x 12.7 cm)      | 1.9 lbs (0.82 kg) |
| 1SKB-UB1818  | 18" x 18" x 5.5" (45.72 x 45.72 x 13.97 cm) | 2.0 lbs (0.91 kg) |
| 1SKB-UB2020  | 20" x 20" x 5.5" (50.8 x 50.8 x 13.97 cm)   | 2.2 lbs (1 kg)    |

## CONTROLLER CASES

- Durable 600 Denier exterior layered with rigid foam core
- Padded interior
- Heavy-duty double pull zipper
- Convenient exterior accessory pouch
- Carrying handle and convenient shoulder strap

## 1SKB-SC1913

## CONTROLLER SOFT CASE

**INTERIOR (H x W x D)**  
19" x 12.75" x 3.13"  
(48.26 x 32.39 x 7.94 cm)

**WEIGHT**  
3 lbs (1.36 kg)



## 1SKB-SC2111

## FOOT CONTROLLER SOFT CASE

**INTERIOR (H x W x D)**  
21.5" x 11.25" x 3.88"  
(54.61 x 28.58 x 9.84 cm)

**WEIGHT**  
3.6 lbs (1.63 kg)



| MODEL NUMBER | INTERIOR (H x W x D)                          | WEIGHT            |
|--------------|---|-------------------|
| 1SKB-SC2311  | 23" x 11" x 3.63" (58.42 x 27.94 x 9.21 cm)   | 3 lbs (1.36 kg)   |
| 1SKB-SC2316  | 23" x 16" x 5.5" (58.42 x 40.64 x 13.97 cm)   | 5 lbs (2.26 kg)   |
| 1SKB-SC2414  | 23.75" x 14" x 3" (60.3 x 35.5 x 7.62 cm)     | 3.8 lbs (1.72 kg) |
| 1SKB-SC2709  | 27.25" x 9.75" x 3" (69.22 x 24.77 x 7.62 cm) | 3 lbs (1.36 kg)   |
| 1SKB-SC2714  | 27" x 14.25" x 3.25" (68.5 x 36 x 8.26 cm)    | 4 lbs (1.81 kg)   |
| 1SKB-SC3212  | 32" x 12" x 3.25" (81.28 x 30.48 x 8.26 cm)   | 4.2 lbs (1.9 kg)  |



## 3i1813-5MPC1

## iSERIES AKAI MPC ONE CASE

**i series**

Fits the AKAI MPC One Sampler/Sequencer, with side pockets for the power supply, audio cables, or other accessories.

**PROCESS**

Injection Molded

**EXTERIOR (L x W x D)**

19.68" x 15.18" x 5.46"

(49.99 x 38.56 x 13.87 cm)

**WEIGHT**

6.57 lbs (2.98 kg)



## 3i1813-7MPC2

## iSERIES AKAI MPC LIVE II CASE

**i series**

Fits the AKAI MPC Live II Sampler/Sequencer, with a large (13" x 6.63" x 3.25") accessory pocket below for the power supply, headphones, audio cables, or other accessories.

**PROCESS**

Injection Molded

**EXTERIOR (L x W x D)**

19.83" x 15.5" x 7.88"

(50.37 x 39.37 x 20.02 cm)

**WEIGHT**

8.64 lbs (3.92 kg)





## 3i2421-7MPCX

## iSERIES AKAI MPC X CASE

**i series**

Fits the Akai MPC X Sampler/Sequencer with room for cables and other accessories, oversized carry handle, easy-to-operate tow handle, and in-line wheels.

**PROCESS**

Injection Molded

**EXTERIOR (L x W x D)**

26.25" x 23.5" x 8.5"  
(66.68 x 59.69 x 21.59 cm)

**WEIGHT**

21.29 lbs (9.66 kg)



## 3i-201510PAR

## iSERIES CHAUVET FREEDOM PAR CASE

**i series**

Features padded compartments for six ADJ Element Par Lights or six Chauvet Freedom Par Lights and ten individual power cable/accessory compartments, with wheels and a pull handle for easy transport.

**PROCESS**

Injection Molded

**EXTERIOR (L x W x D)**

22.92" x 17.98" x 11.55"  
(58.22 x 45.67 x 29.34 cm)

**WEIGHT**

20.2 lbs (9.16 kg)



## 3i-5014-LBAR

## iSERIES WATERPROOF LED LIGHT BAR CASE

**i series**

Will hold four light bars up to 46.5" in length, with movable PE foam blocks that allow you to comfortably fit two short light bars or one long bar per 2.75" wide channel, as well as space underneath the fixtures for cable storage.

**PROCESS**

Injection Molded

**EXTERIOR (L x W x D)**

53.04" x 16.98" x 6.84"  
(134.72 x 43.13 x 17.37 cm)

**WEIGHT**

21.13 lbs (9.58 kg)





## WIRED MIC CASES

3i-0907-MC3

## iSERIES 3 MIC CASE

**i series****INTERIOR FOAM DESCRIPTION**

(3) Mics with Perforated Foam  
for Different Mic Shapes

**EXTERIOR (L x W x D)**

10.73" x 9.69" x 4.8"  
(27.25 x 24.61 x 12.19 cm)

**WEIGHT**

2.4 lbs  
(1.09 kg)



3i-0907-MC6

## iSERIES 6 MIC CASE

**i series****INTERIOR FOAM DESCRIPTION**

(6) Mics with Perforated Foam  
for Different Mic Shapes

**EXTERIOR (L x W x D)**

10.73" x 9.69" x 6.82"  
(27.25 x 24.61 x 17.32 cm)

**WEIGHT**

3.05 lbs  
(1.38 kg)



3i-2011-MC12

## iSERIES 12 MIC CASE

**i series****INTERIOR FOAM DESCRIPTION**

(12) Mics with Cable Storage

**EXTERIOR (L x W x D)**

21.93" x 13.98" x 9"  
(55.7 x 35.51 x 22.86 cm)

**WEIGHT**

9 lbs  
(4.08 kg)



3i-2015-MC24

## iSERIES 24 MIC CASE

**i series****INTERIOR FOAM DESCRIPTION**

(24) Mics with Cable Storage

**EXTERIOR (L x W x D)**

22.92" x 17.98" x 11.55"  
(58.22 x 45.67 x 29.34 cm)

**WEIGHT**

15.8 lbs  
(7.17 kg)





## WIRELESS MIC CASES

3i0705-3-XSW

**iSERIES SENNHEISER XSW-D ENG  
SET WIRELESS AUDIO SYSTEM CASE**

**i series**



### INTERIOR FOAM DESCRIPTION

Foam Cut for Sennheiser  
XSW-D ENG Set Wireless  
Mic System

### EXTERIOR (L x W x D)

9.41" x 7.82" x 4.35"  
(23.9 x 19.86 x 11.05 cm)

### WEIGHT

1.28 lbs (0.58 kg)



3i-0806-3-AVX

**iSERIES SENNHEISER AVX MIC CASE**

**i series**



### INTERIOR FOAM DESCRIPTION

Foam Cut for Sennheiser  
AVX Wireless Audio  
System

### EXTERIOR (L x W x D)

9.41" x 7.82" x 4.35"  
(23.9 x 19.86 x 11.05 cm)

### WEIGHT

1.8 lbs (0.82 kg)



3i0806-3-ROD

**iSERIES RODELINK WIRELESS CASE**

**i series**



### INTERIOR FOAM DESCRIPTION

Foam Cut for RodeLink  
Wireless Audio System

### EXTERIOR (L x W x D)

9.41" x 7.82" x 4.35"  
(23.9 x 19.86 x 11.05 cm)

### WEIGHT

1.8 lbs (0.82 kg)



3i0907-4-SWK

**iSERIES SENNHEISER EW WIRELESS  
MIC CASE**

**i series**



### INTERIOR FOAM DESCRIPTION

Foam Cut for Sennheiser  
EW Wireless Mic Series

### EXTERIOR (L x W x D)

10.73" x 9.69" x 4.8"  
(27.25 x 24.61 x 12.19 cm)

### WEIGHT

2.8 lbs (1.27 kg)



| MODEL<br>NUMBER | MATERIAL  | EXTERIOR (L x W x D)                               | WEIGHT               |
|-----------------|---|--|----------------------|
| 3i-1711-SEN     | Foam Cut for Sennheiser EW Wireless Mic Series      | 18.25" x 13.79" x 6.81" (46.36 x 35.03 x 17.3 cm)  | 7.05 lbs (3.2 kg)    |
| 3i-1711-XLXD    | Foam Cut for Shure SLX-D/QLX-D Wireless Mic System  | 18.25" x 13.79" x 6.81" (46.36 x 35.03 x 17.3 cm)  | 7.05 lbs (3.2 kg)    |
| 3i-1813-5WMC    | Foam Cut for 4 Wireless Mic System, Bodypacks       | 19.68" x 15.18" x 5.46" (49.99 x 38.56 x 13.87 cm) | 6.6 lbs (2.99 kg)    |
| 3i-1813-7WMC    | Foam Cut for 8 Wireless Mic System, Bodypacks       | 19.82" x 15.5" x 7.88" (50.34 x 39.37 x 20.02 cm)  | 8.6 lbs (3.9 kg)     |
| 3i-221710WMC    | 2U rack + Foam Cut for 4 wireless mics, 4 Bodypacks | 24.5" x 19.37" x 12.22" (62.23 x 49.2 x 31.04 cm)  | 25.35 lbs (11.5 kg)  |
| 3i-231714WMC    | 4U rack + Foam Cut for 4 Wireless Mics, 4 Bodypacks | 25.63" x 16.5" x 15.63" (65.1 x 41.91 x 39.7 cm)   | 30.88 lbs (14.01 kg) |



## ZOOM RECORDERS

SKB iSeries Officially Licensed waterproof hard cases were specifically designed for Zoom recorders with custom cut, high quality PE foam interiors.

3i-0907-4-H6

iSERIES ZOOM H6 RECORDER CASE

**i series****INTERIOR FOAM DESCRIPTION**

This compact Zoom H6 case includes spaces for the recorder, XYH-6 X/Y and MSH-6 MS mic capsules, cables, memory cards, and additional accessories.

**EXTERIOR (L x W x D)**

10.73" x 9.69" x 4.8"  
(27.25 x 24.61 x 12.19 cm)

**WEIGHT**

2.8 lbs (1.27 kg)



3i-1208-3-H8

iSERIES ZOOM H8 CASE

**i series****INTERIOR FOAM DESCRIPTION**

Fits the Zoom H8 with room for the XYH-6 X/Y mic capsule, SGH-6 Shotgun mic capsule, and two memory cards, with space for additional capsules, short cables, or other small accessories.

**EXTERIOR (L x W x D)**

12.86" x 9.7" x 3.8"  
(32.67 x 24.64 x 9.65 cm)

**WEIGHT**

2.4 lbs (1.09 kg)



3i-1209-4-H6B

iSERIES ZOOM H6 RECORDER CASE

**i series****INTERIOR FOAM DESCRIPTION**

This larger Zoom H6 case includes additional pockets for the SHG-6 Shotgun mic capsule and EXH-6 Dual XLR/TRS Combo capsule.

**EXTERIOR (L x W x D)**

13.18" x 11.12" x 5.21"  
(33.48 x 28.24 x 13.23 cm)

**WEIGHT**

3.6 lbs (1.63 kg)



3i-0907-4-H5

iSERIES ZOOM H5 RECORDER CASE

**i series****INTERIOR FOAM DESCRIPTION**

This case includes space for the H5 recorder and features an open pocket for additional accessories.

**EXTERIOR (L x W x D)**

10.73" x 9.69" x 4.8"  
(27.25 x 24.61 x 12.19 cm)

**WEIGHT**

2.8 lbs (1.27 kg)





## TRIPOD/STAND CASES

Roto-Molded tripod cases are available in 8 sizes to accommodate every popular tripod and light stand from 29" to 50".



Heavy-duty web straps with sturdy high-tension slide release buckles



Flat areas on both sides for placement of shipping labels



Two molded-in ergonomic carrying handles



In-line skate style wheels for easy transport (see chart)



Integrated padlock loop for customer supplied lock



| MODEL NUMBER | INTERIOR (TALL x DIAMETER)    | EXTERIOR (L x W x D)                                | WEIGHT             | WHEELS |
|--------------|-------------------------------|---|--------------------|--------|
| 1SKB-R2411   | 24" x 11" (60.96 x 27.94 cm)  | 27.25" x 12.75" x 14" (69.22 x 32.39 x 35.56 cm)    | 10.4 lbs (4.72 kg) | No     |
| 1SKB-R2907   | 29" x 7.5" (73.66 x 19.05 cm) | 32.25" x 10.5" x 9.25" (81.92 x 26.67 x 23.5 cm)    | 7.6 lbs (3.45 kg)  | No     |
| 1SKB-R3411W  | 34" x 11" (86.36 x 27.94 cm)  | 38.25" x 12.75" x 13.75" (97.16 x 32.39 x 34.93 cm) | 15 lbs (6.8 kg)    | Yes    |
| 1SKB-R3709W  | 37" x 9" (93.98 x 22.86 cm)   | 40.25" x 12.5" x 11" (102.24 x 31.75 x 27.94 cm)    | 11.6 lbs (5.26 kg) | Yes    |
| 1SKB-R4111W  | 41" x 11" (104.14 x 27.94 cm) | 45.25" x 12.75" x 14" (114.94 x 32.39 x 35.56 cm)   | 17 lbs (7.71 kg)   | Yes    |
| 1SKB-R4209W  | 42" x 9" (106.68 x 22.86 cm)  | 47.5" x 12.5" x 11" (120.65 x 31.75 x 27.94 cm)     | 12.8 lbs (5.81 kg) | Yes    |
| 1SKB-R4611W  | 46" x 11" (116.84 x 27.94 cm) | 50.75" x 12.75" x 14" (128.91 x 32.39 x 35.56 cm)   | 16 lbs (7.26 kg)   | Yes    |
| 1SKB-R5011W  | 50" x 11" (127 x 27.94 cm)    | 54.75" x 12.75" x 14" (139.07 x 32.39 x 35.56 cm)   | 16 lbs (7.26 kg)   | Yes    |



## INJECTION MOLDED WATERPROOF CASES

SKB iSeries cases are watertight, dustproof, and provide optimal strength, durability, and customizability to suit every application.

- Lighter and 2.8x stronger than the competition's cases
- Watertight and dustproof
- Meets Military Standards and manufactured to withstand the toughest conditions
- Lifetime Warranty
- Resistant to impact damage, UV, solvents, corrosion, and fungus (MIL-STD-810F)
- 100% Made in the USA and fully warranted for the life of the case to the original owner

\* For more information about replacement foam, please visit [skbcases.com](http://skbcases.com)

**i series**

**MILITARY  
APPROVED**



## PULL HANDLE



Convenient pull handle with easy push button release

## TRIGGER LATCHES



Easy-to-operate trigger latches and reinforced padlock hoops

## PRESSURE VALVE







Automatic ambient pressure relief valve



## MODEL NUMBER KEY

3i-2317-14

- |   |  |
|---|--|
|  iSeries         |  Interior Width       |
|  Interior Length |  Interior Total Depth |



## WHEELS



Quiet-glide, skate-style wheels

## CUBED FOAM

Layers of cubed foam  
for customization \*

## PADDED DIVIDER

High contrast ThinkTank  
padded divider interiors



| MODEL NUMBER | INTERIOR (L x W x H)                                   | EXTERIOR (L x W x H)                                   | LID DEPTH          | BASE DEPTH          | WEIGHT EMPTY           | PULL HANDLE/ WHEELS | PHOTO DIVID-ERS | CUBED FOAM | LAYERED FOAM | LID ORGA-NIZER | VIDEO DIVID-ERS |
|--------------|--|--|--------------------|---------------------|------------------------|---------------------|-----------------|------------|--------------|----------------|-----------------|
| 3i-0702-1    | 7.76" x 2.15" x 1.3"<br>(19.71 x 5.46 x 3.3 cm)        | 8.63" x 3.14" x 1.56"<br>(21.92 x 7.98 x 3.96 cm)      | 0.65"<br>(1.65 cm) | 0.65"<br>(1.65 cm)  | 0.33 lbs<br>(0.15 kg)  |                     |                 |            | X            |                |                 |
| 3i-0705-3    | 7.5" x 5" x 3.25"<br>(19.05 x 12.7 x 8.26 cm)          | 8.36" x 6.7" x 3.83"<br>(21.23 x 17.02 x 9.73 cm)      | 0.5"<br>(1.27 cm)  | 2.75"<br>(6.99 cm)  | 1.13 lbs<br>(0.51 kg)  |                     |                 | X          |              |                |                 |
| 3i-0806-3    | 8.5" x 6" x 3.75"<br>(21.59 x 15.24 x 9.53 cm)         | 9.41" x 7.82" x 4.35"<br>(23.9 x 19.86 x 11.05 cm)     | 0.5"<br>(1.27 cm)  | 3.25"<br>(8.26 cm)  | 1.63 lbs<br>(0.74 kg)  |                     |                 | X          |              |                |                 |
| 3i-0907-4    | 9.5" x 7.38" x 4.13"<br>(24.13 x 18.75 x 10.49 cm)     | 10.73" x 9.69" x 4.8"<br>(27.25 x 24.61 x 12.19 cm)    | 1.19"<br>(3.02 cm) | 2.94"<br>(7.47 cm)  | 2.57 lbs<br>(1.17 kg)  |                     | X               | X          | X            |                |                 |
| 3i-0907-6    | 9.38" x 7.38" x 6.13"<br>(23.83 x 18.75 x 15.57 cm)    | 10.68" x 9.69" x 6.82"<br>(27.13 x 24.61 x 17.32 cm)   | 1.19"<br>(3.02 cm) | 4.94"<br>(12.55 cm) | 2.88 lbs<br>(1.31 kg)  |                     | X               | X          | X            |                |                 |
| 3i-1006-3    | 10.75" x 6.13" x 3.25"<br>(27.31 x 15.57 x 8.26 cm)    | 11.72" x 8" x 3.86"<br>(29.77 x 20.32 x 9.8 cm)        | 0.5"<br>(1.27 cm)  | 2.75"<br>(6.99 cm)  | 1.96 lbs<br>(0.89 kg)  |                     |                 | X          |              |                |                 |
| 3i-1208-3    | 12" x 8" x 3.25"<br>(30.48 x 20.32 x 8.26 cm)          | 12.86" x 9.7" x 3.8"<br>(32.66 x 24.64 x 9.65 cm)      | 0.5"<br>(1.27 cm)  | 2.75"<br>(6.99 cm)  | 2.12 lbs<br>(0.96 kg)  |                     |                 | X          |              |                |                 |
| 3i-1209-4    | 12" x 9" x 4.5"<br>(30.48 x 22.86 x 11.43 cm)          | 13.18" x 11.12" x 5.21"<br>(33.48 x 28.24 x 13.23 cm)  | 1.5"<br>(3.81 cm)  | 3"<br>(7.62 cm)     | 3 lbs<br>(1.36 kg)     |                     | X               | X          | X            |                |                 |
| 3i-1309-6    | 13.5" x 9.5" x 6.5"<br>(34.29 x 24.13 x 16.51 cm)      | 14.73" x 11.94" x 7.31"<br>(37.41 x 30.33 x 18.57 cm)  | 1.5"<br>(3.81 cm)  | 5"<br>(12.7 cm)     | 4.75 lbs<br>(2.15 kg)  |                     | X               | X          |              | X              |                 |
| 3i-1510-4    | 15" x 10.5" x 4.5"<br>(38.1 x 26.67 x 11.43 cm)        | 16.25" x 13" x 5.3"<br>(41.28 x 33.02 x 13.46 cm)      | 1.6"<br>(4.06 cm)  | 3.7"<br>(9.4 cm)    | 4.63 lbs<br>(2.1 kg)   |                     | X               | X          |              | X              |                 |
| 3i-1510-6    | 15" x 10.5" x 6"<br>(38.1 x 26.67 x 15.24 cm)          | 16.24" x 12.94" x 6.78"<br>(41.25 x 32.87 x 17.22 cm)  | 1.7"<br>(4.32 cm)  | 4.3"<br>(10.92 cm)  | 5.19 lbs<br>(2.35 kg)  |                     | X               | X          | X            | X              |                 |
| 3i-1510-9    | 15" x 10.5" x 9"<br>(38.1 x 26.67 x 22.86 cm)          | 16.25" x 13" x 9.8"<br>(41.28 x 33.02 x 24.89 cm)      | 1.75"<br>(4.45 cm) | 7.25"<br>(18.42 cm) | 6.07 lbs<br>(2.75 kg)  |                     |                 | X          |              | X              |                 |
| 3i-1515-6    | 15" x 15" x 6.5"<br>(38.1 x 38.1 x 16.51 cm)           | 17.5" x 17.61" x 7.31"<br>(44.45 x 44.73 x 18.57 cm)   | 2"<br>(5.08 cm)    | 4.5"<br>(11.43 cm)  | 7.17 lbs<br>(3.25 kg)  |                     | X               | X          |              |                | X               |
| 3i-1610-5    | 16" x 10" x 5.5"<br>(40.64 x 25.4 x 13.97 cm)          | 17.17" x 12.17" x 6.21"<br>(43.61 x 30.91 x 15.77 cm)  | 2"<br>(5.08 cm)    | 3.5"<br>(8.89 cm)   | 5.23 lbs<br>(2.37 kg)  |                     | X               | X          | X            |                |                 |
| 3i-1610-10   | 16" x 10" x 10"<br>(40.64 x 25.4 x 25.4 cm)            | 17.38" x 12.54" x 11.68"<br>(44.15 x 31.85 x 29.67 cm) | 2.71"<br>(6.89 cm) | 8.97"<br>(22.78 cm) | 7.26 lbs<br>(3.29 kg)  |                     | X               | X          |              |                | X               |
| 3i-1706-6    | 17" x 6.5" x 6.5"<br>(43.18 x 16.51 x 16.51 cm)        | 18.2" x 8.98" x 7.3"<br>(46.23 x 22.81 x 18.54 cm)     | 2"<br>(5.08 cm)    | 4.5"<br>(11.43 cm)  | 4.78 lbs<br>(2.17 kg)  |                     | X               | X          |              |                |                 |
| 3i-1711-6    | 17" x 11.5" x 6.16"<br>(43.18 x 29.21 x 15.65 cm)      | 18.32" x 13.96" x 6.95"<br>(46.53 x 35.46 x 17.65 cm)  | 1.84"<br>(4.67 cm) | 4.32"<br>(10.97 cm) | 5.91 lbs<br>(2.68 kg)  |                     | X               | X          | X            |                |                 |
| 3i-1717-10   | 17" x 17" x 10"<br>(43.18 x 43.18 x 25.4 cm)           | 19.5" x 19.7" x 10.9"<br>(49.53 x 50.04 x 27.69 cm)    | 2"<br>(5.08 cm)    | 8"<br>(20.32 cm)    | 10.47 lbs<br>(4.75 kg) |                     |                 | X          |              |                |                 |
| 3i-1717-16   | 17" x 17" x 16"<br>(43.18 x 43.18 x 40.64 cm)          | 19.46" x 19.62" x 16.86"<br>(49.43 x 49.83 x 42.82 cm) | 2"<br>(5.08 cm)    | 14"<br>(35.56 cm)   | 13.87 lbs<br>(6.29 kg) |                     |                 | X          |              |                |                 |
| 3i-1813-5    | 18.5" x 13" x 4.79"<br>(46.99 x 33.02 x 12.17 cm)      | 19.7" x 15.48" x 5.58"<br>(50.04 x 39.32 x 14.17 cm)   | 1.53"<br>(3.89 cm) | 3.26"<br>(8.28 cm)  | 5.8 lbs<br>(2.63 kg)   |                     | X               | X          | X            | X              |                 |
| 3i-1813-7    | 18.52" x 13.02" x 7.06"<br>(47.04 x 33.07 x 17.93 cm)  | 19.82" x 15.5" x 7.88"<br>(50.34 x 39.37 x 20.02 cm)   | 1.52"<br>(3.86 cm) | 5.54"<br>(14.07 cm) | 7.71 lbs<br>(3.5 kg)   |                     | X               | X          |              | X              |                 |
| 3i-1914-8    | 19.02" x 14.52" x 8.02"<br>(48.31 x 36.88 x 20.37 cm)  | 21.45" x 17.01" x 9.62"<br>(54.48 x 43.21 x 24.43 cm)  | 2.02"<br>(5.13 cm) | 6"<br>(15.24 cm)    | 13.19 lbs<br>(5.98 kg) | X                   | X               | X          | X            |                |                 |
| 3i-1914N-8   | 19" x 14.5" x 8"<br>(48.26 x 36.83 x 20.32 cm)         | 20.25" x 16.93" x 8.78"<br>(51.44 x 43 x 22.3 cm)      | 2"<br>(5.08 cm)    | 6"<br>(15.24 cm)    | 8.17 lbs<br>(3.71 kg)  |                     | X               | X          |              |                |                 |
| 3i-2011-7    | 20.53" x 11.53" x 7.51"<br>(52.15 x 29.29 x 19.08 cm)  | 21.89" x 13.96" x 9"<br>(55.6 x 35.46 x 22.86 cm)      | 2.09"<br>(5.31 cm) | 5.42"<br>(13.77 cm) | 11.2 lbs<br>(5.08 kg)  | X                   | X               | X          |              | X              |                 |
| 3i-2011-8    | 20.53" x 11.53" x 8.24"<br>(52.15 x 29.29 x 20.93 cm)  | 21.93" x 13.98" x 9"<br>(55.7 x 35.51 x 22.86 cm)      | 2"<br>(5.08 cm)    | 6.24"<br>(15.85 cm) | 7.97 lbs<br>(3.62 kg)  |                     | X               | X          |              | X              |                 |
| 3i-2011-10   | 20" x 11.5" x 10.56"<br>(50.8 x 29.21 x 26.82 cm)      | 22" x 14" x 12"<br>(55.88 x 35.56 x 30.48 cm)          | 2.06"<br>(5.23 cm) | 8.5"<br>(21.59 cm)  | 12.75 lbs<br>(5.78 kg) | X                   |                 | X          |              |                |                 |
| 3i-2015-7    | 20.53" x 15.53" x 7.56"<br>(52.15 x 39.45 x 19.2 cm)   | 22.27" x 17.98" x 8.32"<br>(56.57 x 45.67 x 21.13 cm)  | 2"<br>(5.08 cm)    | 5.56"<br>(14.12 cm) | 9.27 lbs<br>(4.2 kg)   |                     | X               | X          |              | X              |                 |
| 3i-2015-10   | 20.53" x 15.53" x 10.06"<br>(52.15 x 39.45 x 25.56 cm) | 22.92" x 17.98" x 11.55"<br>(58.22 x 45.67 x 29.34 cm) | 2.06"<br>(5.23 cm) | 8"<br>(20.32 cm)    | 14.27 lbs<br>(6.47 kg) | X                   | X               | X          |              | X              | X               |
| 3i-2213-12   | 22" x 13" x 12"<br>(55.88 x 33.02 x 30.48 cm)          | 24.18" x 15.52" x 13.65"<br>(61.42 x 39.42 x 34.67 cm) | 2"<br>(5.08 cm)    | 12"<br>(30.48 cm)   | 16.32 lbs<br>(7.4 kg)  | X                   | X               | X          |              | X              | X               |
| 3i-2215-8    | 22" x 15.5" x 8"<br>(55.88 x 39.37 x 20.32 cm)         | 24.58" x 18" x 9.65"<br>(62.43 x 45.72 x 24.51 cm)     | 2"<br>(5.08 cm)    | 8"<br>(20.32 cm)    | 16.02 lbs<br>(7.27 kg) | X                   | X               | X          |              |                |                 |
| 3i-2217-8    | 22" x 17" x 8"<br>(55.88 x 43.18 x 20.32 cm)           | 24.32" x 19.5" x 8.86"<br>(61.78 x 49.53 x 22.5 cm)    | 2"<br>(5.08 cm)    | 6"<br>(15.24 cm)    | 11.12 lbs<br>(5.04 kg) |                     | X               | X          |              | X              |                 |



| MODEL NUMBER | INTERIOR<br>(L x W x H)                               | EXTERIOR<br>(L x W x H)                                | LID DEPTH          | BASE DEPTH           | WEIGHT<br>EMPTY         | PULL<br>HANDLE/<br>WHEELS | PHOTO<br>DIVID-<br>ERS | CUBED<br>FOAM | LAYERED<br>FOAM | LID ORGA-<br>NIZER | VIDEO<br>DIVID-<br>ERS |
|--------------|---|--|--------------------|----------------------|-------------------------|---------------------------|------------------------|---------------|-----------------|--------------------|------------------------|
| 3i-2217-10   | 22" x 17" x 10.62"<br>(55.88 x 43.18 x 26.97 cm)      | 24.5" x 19.37" x 12.22"<br>(62.23 x 19.37 x 31.04 cm)  | 2"<br>(5.08 cm)    | 8.62"<br>(21.89 cm)  | 17.49 lbs<br>(7.93 kg)  | X                         | X                      | X             |                 | X                  | X                      |
| 3i-2217-12   | 22" x 17" x 12.75"<br>(55.88 x 43.18 x 32.39 cm)      | 24.34" x 19.47" x 14.38"<br>(61.82 x 49.45 x 36.53 cm) | 2"<br>(5.08 cm)    | 10.75"<br>(27.31 cm) | 18.57 lbs<br>(8.42 kg)  | X                         | X                      | X             |                 | X                  | X                      |
| 3i-2222-12   | 22.52" x 22.52" x 12.5"<br>(57.2 x 57.2 x 31.75 cm)   | 24.81" x 24.98" x 14.15"<br>(63.02 x 63.45 x 35.94 cm) | 2"<br>(5.08 cm)    | 10.47"<br>(26.59 cm) | 21.8 lbs<br>(9.89 kg)   | X                         | X                      | X             |                 |                    |                        |
| 3i-2317-14   | 23" x 17" x 14"<br>(58.42 x 43.18 x 35.56 cm)         | 25.58" x 19.47" x 15.68"<br>(64.97 x 49.45 x 39.83 cm) | 2"<br>(5.08 cm)    | 11.5"<br>(29.21 cm)  | 20.8 lbs<br>(9.43 kg)   | X                         |                        | X             |                 |                    |                        |
| 3i-2421-7    | 24.12" x 21" x 7"<br>(61.26 x 53.34 x 17.78 cm)       | 26.21" x 23.52" x 8.65"<br>(66.57 x 59.74 x 21.97 cm)  | 2"<br>(5.08 cm)    | 5"<br>(12.7 cm)      | 18.85 lbs<br>(8.55 kg)  | X                         |                        | X             |                 |                    |                        |
| 3i-2424-10   | 24" x 24" x 10"<br>(60.96 x 60.96 x 25.4 cm)          | 26.5" x 26.56" x 11.65"<br>(67.31 x 67.46 x 29.59 cm)  | 2"<br>(5.08 cm)    | 8"<br>(20.32 cm)     | 23.59 lbs<br>(10.7 kg)  | X                         |                        | X             |                 |                    |                        |
| 3i-2424-14   | 24" x 24" x 14"<br>(60.96 x 60.96 x 35.56 cm)         | 26.5" x 26.54" x 15.65"<br>(67.31 x 67.41 x 39.75 cm)  | 2"<br>(5.08 cm)    | 12"<br>(30.48 cm)    | 25.39 lbs<br>(11.52 kg) | X                         |                        | X             |                 |                    |                        |
| 3i-2615-10   | 26" x 15" x 10"<br>(66.04 x 38.1 x 25.4 cm)           | 28.6" x 17.55" x 11.65"<br>(72.64 x 44.58 x 29.59 cm)  | 2"<br>(5.08 cm)    | 8"<br>(20.32 cm)     | 19 lbs<br>(8.62 kg)     | X                         |                        | X             |                 |                    |                        |
| 3i-2617-12   | 26.08" x 17.5" x 12"<br>(66.24 x 44.45 x 30.48 cm)    | 26.6" x 20" x 13.65"<br>(67.56 x 50.8 x 34.67 cm)      | 2"<br>(5.08 cm)    | 10"<br>(25.4 cm)     | 20.89 lbs<br>(9.48 kg)  | X                         | X                      | X             |                 |                    |                        |
| 3i-2914-15   | 29" x 14" x 15"<br>(73.66 x 35.56 x 38.1 cm)          | 32.08" x 16.68" x 15.87"<br>(81.48 x 42.37 x 40.31 cm) | 2"<br>(5.08 cm)    | 13"<br>(33.02 cm)    | 20.18 lbs<br>(9.15 kg)  | X                         |                        | X             |                 |                    |                        |
| 3i-2918-10   | 29" x 18" x 10.85"<br>(73.66 x 45.72 x 27.56 cm)      | 31.52" x 20.53" x 12.5"<br>(80.06 x 52.15 x 31.75 cm)  | 2"<br>(5.08 cm)    | 8.85"<br>(22.48 cm)  | 22.13 lbs<br>(10.04 kg) | X                         | X                      | X             |                 |                    |                        |
| 3i-2918-14   | 29" x 18" x 14"<br>(73.66 x 45.72 x 35.56 cm)         | 31.52" x 20.53" x 15.7"<br>(80.06 x 52.15 x 39.88 cm)  | 2.5"<br>(6.35 cm)  | 11.5"<br>(29.21 cm)  | 24.2 lbs<br>(10.98 kg)  | X                         |                        | X             |                 |                    |                        |
| 3i-2922-10   | 29" x 22" x 10.52"<br>(73.66 x 55.88 x 26.72 cm)      | 31.75" x 24.6" x 12.18"<br>(80.65 x 62.48 x 30.94 cm)  | 2.02"<br>(5.13 cm) | 8.5"<br>(21.59 cm)   | 26.81 lbs<br>(12.16 kg) | X                         |                        | X             |                 |                    |                        |
| 3i-2922-16   | 29" x 22" x 16"<br>(73.66 x 55.88 x 40.64 cm)         | 31.94" x 24.54" x 16.87"<br>(81.13 x 62.33 x 42.85 cm) | 2"<br>(5.08 cm)    | 14"<br>(35.56 cm)    | 28.25 lbs<br>(12.81 kg) | X                         |                        | X             |                 |                    |                        |
| 3i-3016-10   | 30" x 16" x 10"<br>(76.2 x 40.64 x 25.4 cm)           | 32.4" x 18.5" x 10.85"<br>(82.3 x 46.99 x 27.56 cm)    | 2"<br>(5.08 cm)    | 8"<br>(20.32 cm)     | 17.58 lbs<br>(7.97 kg)  | X                         | X                      | X             |                 |                    |                        |
| 3i-3019-12   | 30.5" x 19.5" x 12"<br>(77.47 x 49.53 x 30.48 cm)     | 33.42" x 22.04" x 12.87"<br>(84.89 x 55.98 x 32.69 cm) | 2"<br>(5.08 cm)    | 10"<br>(25.4 cm)     | 23.59 lbs<br>(10.7 kg)  | X                         |                        | X             |                 |                    |                        |
| 3i-3021-18   | 30" x 21" x 18"<br>(76.2 x 53.34 x 45.72 cm)          | 32.94" x 23.53" x 18.87"<br>(83.67 x 59.77 x 47.93 cm) | 2"<br>(5.08 cm)    | 16"<br>(40.64 cm)    | 29.93 lbs<br>(13.58 kg) | X                         |                        | X             |                 |                    |                        |
| 3i-3026-15   | 30.75" x 26" x 15.5"<br>(78.11 x 66.04 x 39.37 cm)    | 33.71" x 28.53" x 16.37"<br>(85.62 x 72.47 x 41.58 cm) | 2"<br>(5.08 cm)    | 13.5"<br>(34.29 cm)  | 31.46 lbs<br>(14.27 kg) | X                         |                        | X             |                 |                    |                        |
| 3i-3424-12   | 34.5" x 24.5" x 12.75"<br>(87.63 x 62.23 x 32.39 cm)  | 37.44" x 27.04" x 13.62"<br>(95.1 x 68.68 x 34.59 cm)  | 2"<br>(5.08 cm)    | 10.75"<br>(27.31 cm) | 29.94 lbs<br>(13.58 kg) | X                         |                        | X             |                 |                    |                        |
| 3i-3613-12   | 36" x 13.5" x 12"<br>(91.44 x 34.29 x 30.48 cm)       | 38.67" x 16.05" x 12.84"<br>(98.22 x 40.77 x 32.61 cm) | 2"<br>(5.08 cm)    | 10"<br>(25.4 cm)     | 20.23 lbs<br>(9.18 kg)  | X                         | X                      |               | X               |                    |                        |
| 3i-3614-6    | 36.5" x 14.5" x 6"<br>(92.71 x 36.83 x 15.24 cm)      | 39.04" x 16.81" x 6.84"<br>(99.16 x 42.7 x 17.37 cm)   | 1.5"<br>(3.81 cm)  | 4.5"<br>(11.43 cm)   | 15.39 lbs<br>(6.98 kg)  | X                         |                        |               | X               |                    |                        |
| 3i-3913-12   | 39.3" x 13.57" x 12.67"<br>(99.82 x 34.47 x 32.18 cm) | 42" x 16" x 14"<br>(106.68 x 40.64 x 35.56 cm)         | 2"<br>(5.08 cm)    | 10.67"<br>(27.1 cm)  | 22.23 lbs<br>(10.08 kg) | X                         |                        |               | X               |                    |                        |
| 3i-4213-12   | 42.5" x 13.5" x 12.15"<br>(107.95 x 34.29 x 30.86 cm) | 45.5" x 16.03" x 12.97"<br>(115.57 x 40.72 x 32.94 cm) | 2"<br>(5.08 cm)    | 10.15"<br>(25.78 cm) | 22.8 lbs<br>(10.34 kg)  | X                         | X                      |               | X               |                    |                        |
| 3i-4214-5    | 42.5" x 14.5" x 5.5"<br>(107.95 x 36.83 x 13.97 cm)   | 44.96" x 16.98" x 6.34"<br>(114.2 x 43.13 x 16.1 cm)   | 1.5"<br>(3.81 cm)  | 4"<br>(10.16 cm)     | 16.46 lbs<br>(7.47 kg)  | X                         |                        |               | X               |                    |                        |
| 3i-4217-7    | 42.49" x 17" x 7.52"<br>(107.92 x 43.18 x 19.1 cm)    | 45.12" x 19.45" x 8.34"<br>(114.6 x 49.4 x 21.18 cm)   | 2.05"<br>(5.21 cm) | 5.47"<br>(13.89 cm)  | 20.4 lbs<br>(9.25 kg)   | X                         |                        |               | X               |                    |                        |
| 3i-4414-10   | 44.5" x 14.5" x 10"<br>(113.03 x 36.83 x 25.4 cm)     | 47" x 17" x 10.84"<br>(119.38 x 43.18 x 27.53 cm)      | 2"<br>(5.08 cm)    | 8"<br>(20.32 cm)     | 22.89 lbs<br>(10.38 kg) | X                         | X                      |               | X               |                    |                        |
| 3i-4719-8    | 47" x 19" x 8"<br>(119.38 x 48.26 x 20.32 cm)         | 49.66" x 21.5" x 8.87"<br>(126.14 x 54.61 x 22.53 cm)  | 2"<br>(5.08 cm)    | 6"<br>(15.24 cm)     | 24.03 lbs<br>(10.9 kg)  | X                         |                        |               | X               |                    |                        |
| 3i-4909-5    | 49" x 9" x 5"<br>(124.46 x 22.86 x 12.7 cm)           | 50.35" x 11.54" x 5.84"<br>(127.89 x 29.31 x 14.83 cm) | 1.5"<br>(3.81 cm)  | 3.5"<br>(8.89 cm)    | 12.62 lbs<br>(5.72 kg)  |                           |                        |               | X               |                    |                        |
| 3i-5014-6    | 50.5" x 14.5" x 6"<br>(128.27 x 36.83 x 15.24 cm)     | 53.04" x 16.98" x 6.84"<br>(134.72 x 43.13 x 17.37 cm) | 1.5"<br>(3.81 cm)  | 4.5"<br>(11.43 cm)   | 18.73 lbs<br>(8.5 kg)   | X                         |                        |               | X               |                    |                        |
| 3i-5616-9    | 56" x 16" x 9"<br>(142.24 x 40.64 x 22.86 cm)         | 58.71" x 18.55" x 10.63"<br>(149.12 x 47.12 x 27 cm)   | 2"<br>(5.08 cm)    | 7"<br>(17.78 cm)     | 28.47 lbs<br>(12.91 kg) | X                         |                        |               | X               |                    |                        |
| 3i-6018-8    | 60" x 18" x 8"<br>(152.4 x 45.72 x 20.32 cm)          | 62.71" x 20.62" x 9.63"<br>(159.28 x 52.37 x 24.46 cm) | 2"<br>(5.08 cm)    | 6"<br>(15.24 cm)     | 28.59 lbs<br>(12.97 kg) | X                         |                        |               | X               |                    |                        |



## CARRY-ON SIZES

3i-2011-7

**i series**Approved airline  
carry-on size

Available in a variety of interiors including empty, cubed foam, Think Tank padded dividers, and Think Tank divider backpack.

**INTERIOR (L x W x D)**

20.38" x 11.44" x 7.5"  
(51.77 x 29.06 x 19.05 cm)

**EXTERIOR (L x W x D)**

21.89" x 13.96" x 9"  
(55.6 x 35.46 x 22.86 cm)

**WEIGHT**

14.2 lbs (6.44 kg)



3i-CV1309-TT

**i series**Approved airline  
carry-on size

Think Tank cover for 3i-1309-6 case, includes pass through shoulder strap, back pass through for attachment to rolling luggage, two side pockets, and exterior pocket for laptop or tablet.

**INTERIOR (L x W x D)**

13.5" x 9.5" x 6.5"  
(34.29 x 24.13 x 16.51 cm)

**EXTERIOR (L x W x D)**

16" x 12.5" x 8"  
(40.64 x 31.75 x 20.32 cm)

**WEIGHT**

1.49 lbs (0.68 kg)



## CHECKABLE SIZES

3i-3016-10

**i series**

- Under 62 linear inches, maximum non-oversized checkable iSeries case.
- Available in a variety of interiors including empty, layered foam, cubed foam, and Think Tank padded dividers.

**INTERIOR (L x W x D)**

30" x 16" x 10"  
(76.2 x 40.64 x 25.4 cm)

**EXTERIOR (L x W x D)**

32.4" x 18.5" x 10.85"  
(82.3 x 46.99 x 27.56 cm)

**WEIGHT**

18 lbs (8.16 kg)



3i-2617-12

**i series**

- Available in a variety of interiors including empty, cubed foam, and padded dividers.

**INTERIOR (L x W x D)**

26.08" x 17.5" x 12"  
(66.24 x 44.45 x 30.48 cm)

**EXTERIOR (L x W x D)**

28.8" x 20" x 13.65"  
(73.15 x 50.8 x 34.67 cm)

**WEIGHT**

20.8 lbs (9.43 kg)





3i-3613-12DT

iSERIES 3613-12 CASE WITH THINK TANK DESIGNED DIVIDERS

**i series**

Features heavy-duty hinged Think Tank dividers, padded sub-dividers, built-in wheels, and a convenient pull handle for easy transport.

**INTERIOR (L x W x D)**

35" x 12.5" x 10.5"  
(88.9 x 31.75 x 26.67 cm)

**EXTERIOR (L x W x D)**

38.67" x 16.05" x 10.47"  
(98.22 x 40.77 x 26.59 cm)

**WEIGHT**

23.85 lbs (10.82 kg)



3i-2011-7B-TR

iSERIES 3i-2011-7 WATERPROOF TECH BOX (WITH DUAL TRAYS)

**i series**

iSeries Tech Box with pull-out handle and wheels.

**INTERIOR (L x W x D)**

20.38" x 11.44" x 7.5"  
(51.77 x 29.06 x 19.05 cm)

**EXTERIOR (L x W x D)**

21.89" x 13.96" x 9"  
(55.6 x 35.46 x 22.86 cm)

**WEIGHT**

20.4 lbs (9.25 kg)



25

3i-1717-10LT

iSERIES 1717-10 WATERPROOF UTILITY CASE (PADDED LINER)

**i series**

Features a Think Tank Nylex-wrapped closed cell fitted foam liner to pad and protect a variety of gear in transit.

**INTERIOR (L x W x D)**

16" x 16" x 9"  
(40.64 x 40.64 x 22.86 cm)

**EXTERIOR (L x W x D)**

19.5" x 19.7" x 10.9"  
(49.53 x 50.04 x 27.69 cm)

**WEIGHT**

13 lbs (5.9 kg)





## COLORED HANDLES

## SMALL HANDLES

| MODEL NUMBER | DESCRIPTION                   |
|--------------|-------------------------------|
| 3i-HD73-BE   | Small handle, Blue overmold   |
| 3i-HD73-GN   | Small handle, Green overmold  |
| 3i-HD73-OR   | Small handle, Orange overmold |
| 3i-HD73-RD   | Small handle, Red overmold    |
| 3i-HD73-YW   | Small handle, Yellow overmold |



## MEDIUM HANDLES

| MODEL NUMBER | DESCRIPTION                    |
|--------------|--------------------------------|
| 3i-HD80-BE   | Medium handle, Blue overmold   |
| 3i-HD80-GN   | Medium handle, Green overmold  |
| 3i-HD80-OR   | Medium handle, Orange overmold |
| 3i-HD80-RD   | Medium handle, Red overmold    |
| 3i-HD80-YW   | Medium handle, Yellow overmold |

## LARGE HANDLES

| MODEL NUMBER | DESCRIPTION                   |
|--------------|-------------------------------|
| 3i-HD81-BE   | Large handle, Blue overmold   |
| 3i-HD81-GN   | Large handle, Green overmold  |
| 3i-HD81-OR   | Large handle, Orange overmold |
| 3i-HD81-RD   | Large handle, Red overmold    |
| 3i-HD81-YW   | Large handle, Yellow overmold |



## LID ORGANIZERS

Hook-and-loop adhesive backings attach securely to iSeries case lids and feature laminated zippered clear mesh pockets/pouches, including a polyester-lined iPad/laptop top-load pocket.

| MODEL NUMBER | DESCRIPTION               |
|--------------|---------------------------|
| 3i-L01309-TT | Lid organizer for 3i-1309 |
| 3i-L01510-TT | Lid organizer for 3i-1510 |
| 3i-L01813-TT | Lid organizer for 3i-1813 |
| 3i-L02011-TT | Lid organizer for 3i-2011 |
| 3i-L02015-TT | Lid organizer for 3i-2015 |



| MODEL NUMBER | DESCRIPTION               |
|--------------|---------------------------|
| 3i-L02213-TT | Lid organizer for 3i-2213 |
| 3i-L02215-TT | Lid organizer for 3i-2215 |
| 3i-L02217-TT | Lid organizer for 3i-2217 |





## PANEL MOUNTING RING KITS

Panel mounting rings enable attachment of an interface panel that's flush with the case rim, providing room for switches, buttons, ports, etc. Each kit comes with panel ring, drill jigs/templates, drill bit, rubber gasket, and mounting hardware.

| MODEL NUMBER  | DESCRIPTION                  |
|---------------|------------------------------|
| 3i-0907-PRK   | Fits: 3i-0907                |
| 3i-1006-PRK   | Fits: 3i-1006                |
| 3i-1209-PRK   | Fits: 3i-1209                |
| 3i-1309-PRK   | Fits: 3i-1309                |
| 3i-1510-PRK   | Fits: 3i-1510                |
| 3i-1610-5-PRK | Fits: 3i-1610-5              |
| 3i-1706-PRK   | Fits: 3i-1706                |
| 3i-1711-PRK   | Fits: 3i-1711                |
| 3i-1717-PRK   | Fits: 3i-1717                |
| 3i-1813-PRK   | Fits: 3i-1813                |
| 3i-1914-PRK   | Fits: 3i-1914                |
| 3i-2011-PRK   | Fits: 3i-2011                |
| 3i-2015-PRK   | Fits: 3i-2015                |
| 3i-PMCK       | iSeries Panel Mount Clip Kit |



## TSA LOCKING LATCHES

Transportation Security Administration (TSA) baggage screeners are trained to recognize the Travel Sentry logo on TSA-accepted locks, which allows them to open, inspect, and relock baggage.

| MODEL NUMBER | DESCRIPTION                |
|--------------|----------------------------|
| 3i-TSA-1     | Fits: 3i-0907-4, 3i-0907-6 |
| 3i-TSA-3     | Fits: All other models     |



## TSA LOCKS

SKB's TSA-accepted locks allow you to set your own combination and are easily recognizable by TSA screeners.

### 1SKB-PDL

### TSA ACCEPTED PADLOCK



### 1SKB-PDL-C

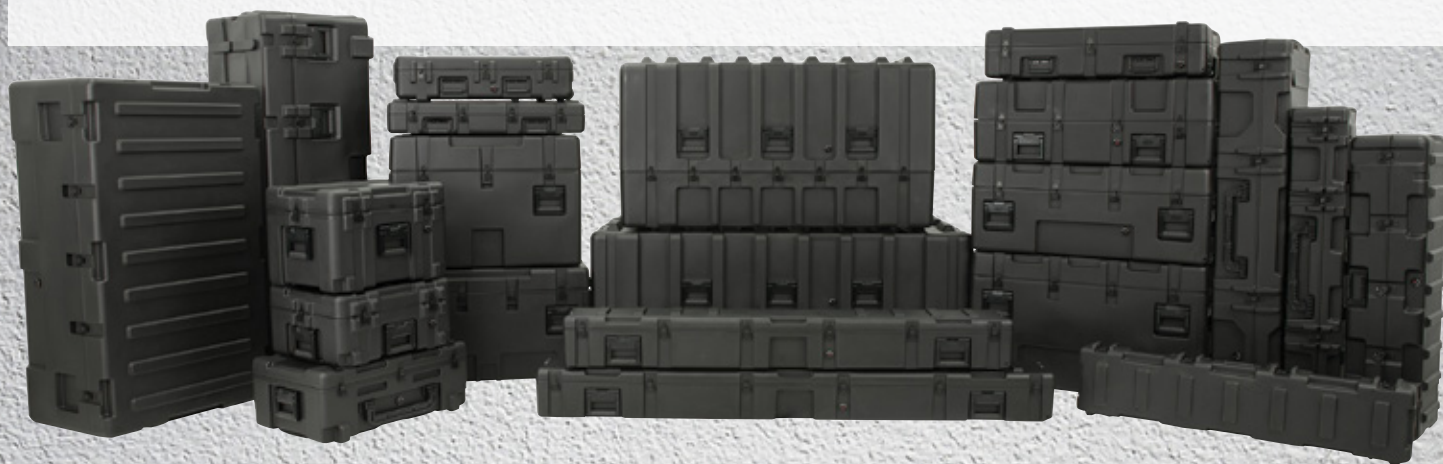
### TSA ACCEPTED CABLE LOCK





## ROTATIONALLY MOLDED WATERTIGHT CASES

- UV, solvent, corrosion, and fungus resistant (MIL-STD-810F)
- Complete gasket seal provides waterproof and dust-tight construction (MIL-C-4150J)
- Automatic ambient pressure equalization valve (MIL-STD-648C & IP67)
- Powder coated stainless steel hardware helps prevent rusting
- Comfortable, spring-loaded, rubber over-molded handles

**R SERIES**

| MODEL NUMBER | INTERIOR (L x W x H)                                | LID DEPTH       | BASE DEPTH        | WEIGHT EMPTY         | PULL HANDLE/WHEELS | OPTIONAL KITS |            |                     |            |              |
|--------------|---|-----------------|-------------------|----------------------|--------------------|---------------|------------|---------------------|------------|--------------|
|              |   |                 |                   |                      |                    | EDGE WHEELS   | CASTER KIT | FORK-LIFT RISER KIT | CUBED FOAM | LAYERED FOAM |
| 3R1919-14    | 19" x 19" x 14.63" (48.26 x 48.26 x 37.16 cm)       | 3.25" (8.26 cm) | 11.38" (28.9 cm)  | 21.08 lbs (9.56 kg)  | X                  |               |            |                     | X          |              |
| 3R2216-15    | 22.12" x 16.12" x 15.29" (56.18 x 40.94 x 38.84 cm) | 3.25" (8.26 cm) | 12.04" (30.58 cm) | 17.85 lbs (8.1 kg)   |                    |               |            |                     |            |              |
| 3R2217-10    | 22" x 17" x 10.5" (55.88 x 43.18 x 26.67 cm)        | 3.13" (7.95 cm) | 7.37" (18.72 cm)  | 20.46 lbs (9.28 kg)  | X                  |               |            |                     | X          |              |
| 3R2222-12    | 22" x 22" x 12.13" (55.88 x 55.88 x 30.81 cm)       | 3.13" (7.95 cm) | 9" (22.86 cm)     | 25.76 lbs (11.68 kg) | X                  |               |            |                     | X          |              |
| 3R2222-20    | 22" x 22" x 20.07" (55.88 x 55.88 x 50.98 cm)       | 3.57" (9.07 cm) | 16.5" (41.91 cm)  | 28.15 lbs (12.77 kg) |                    |               | X          | X                   | X          |              |
| 3R2423-17    | 24" x 23" x 17.23" (60.96 x 58.42 x 43.76 cm)       | 3.75" (9.53 cm) | 13.48" (34.24 cm) | 30.81 lbs (13.98 kg) | X                  |               |            |                     | X          |              |
| 3R2424-24    | 24.19" x 24.19" x 23.88" (61.44 x 61.44 x 60.66 cm) | 3.38" (8.59 cm) | 20.5" (52.07 cm)  | 35.18 lbs (15.96 kg) |                    |               | X          | X                   |            | X            |
| 3R2523-26    | 25.75" x 23.25" x 26.5" (65.41 x 59.01 x 67.31 cm)  | 3" (7.62 cm)    | 23.5" (59.69 cm)  | 47.95 lbs (21.75 kg) |                    |               |            |                     |            |              |
| 3R2621-10    | 26.38" x 21.38" x 10" (67 x 54.31 x 25.4 cm)        | 1.95" (4.95 cm) | 8.05" (20.45 cm)  | 33 lbs (14.97 kg)    | X                  |               |            |                     |            |              |
| 3R2727-13    | 27.25" x 27.25" x 13" (69.22 x 29.22 x 33.02 cm)    | 3" (7.62 cm)    | 10" (25.4 cm)     | 37.91 lbs (17.2 kg)  |                    | X             |            |                     |            |              |
| 3R2727-18    | 27" x 27" x 18" (68.58 x 68.58 x 45.72 cm)          | 3.63" (9.22 cm) | 14.37" (36.5 cm)  | 38.07 lbs (17.27 kg) |                    |               | X          | X                   |            | X            |
| 3R2727-27    | 27" x 27" x 27" (68.58 x 68.58 x 68.58 cm)          | 3.63" (9.22 cm) | 23.37" (59.36 cm) | 46.45 lbs (21.07 kg) |                    |               | X          | X                   |            | X            |
| 3R2817-10    | 29" x 17.75" x 10.75" (73.66 x 45.09 x 27.31 cm)    | 2.12" (5.38 cm) | 8.63" (21.92 cm)  | 22.43 lbs (10.17 kg) | X                  |               |            |                     | X          |              |
| 3R3025-15    | 30.24" x 25.24" x 15.25" (76.81 x 64.11 x 38.74 cm) | 3.88" (9.86 cm) | 11.37" (28.88 cm) | 39.74 lbs (18.03 kg) | X                  |               |            |                     | X          |              |
| 3R3214-15    | 32" x 14.5" x 16.3" (81.28 x 36.83 x 41.4 cm)       | 3.64" (9.25 cm) | 12.66" (32.16 cm) | 30.91 lbs (14.02 kg) | X                  |               |            |                     | X          |              |
| 3R3221-7     | 32" x 21" x 7" (81.28 x 53.34 x 17.78 cm)           | 2.2" (5.59 cm)  | 4.8" (12.19 cm)   | 25.42 lbs (11.53 kg) | X                  |               |            |                     | X          |              |



| MODEL NUMBER | INTERIOR (L x W x H)                                 | LID DEPTH         | BASE DEPTH        | WEIGHT EMPTY          | PULL HANDLE/WHEELS | OPTIONAL KITS |            |                     |            |              |
|--------------|--|-------------------|-------------------|-----------------------|--------------------|---------------|------------|---------------------|------------|--------------|
|              |  |                   |                   |                       |                    | EDGE WHEELS   | CASTER KIT | FORK-LIFT RISER KIT | CUBED FOAM | LAYERED FOAM |
| 3R3426-19    | 34.25" x 26.25" x 19" (87 x 66.68 x 48.26 cm)        | 2.75" (6.99 cm)   | 16.25" (41.28 cm) | 54.48 lbs (24.71 kg)  | X                  |               |            |                     |            |              |
| 3R3517-14    | 35.5" x 17" x 14.5" (90.17 x 43.18 x 36.83 cm)       | 3" (7.62 cm)      | 11.5" (29.21 cm)  | 27.81 lbs (12.61 kg)  |                    | X             |            |                     |            |              |
| 3R3633-9     | 36" x 33" x 9" (91.44 x 83.82 x 22.86 cm)            | 3" (7.62 cm)      | 6" (15.24 cm)     | TBA                   |                    | X             |            |                     |            |              |
| 3R3722-20    | 37.5" x 22.25" x 20" (95.25 x 56.52 x 50.8 cm)       | 2.62" (6.65 cm)   | 17.38" (44.15 cm) | TBA                   | X                  | X             |            |                     |            |              |
| 3R3821-7     | 38.5" x 21.25" x 7.05" (97.79 x 53.98 x 17.91 cm)    | 2.15" (5.46 cm)   | 4.9" (12.45 cm)   | 40.51 lbs (18.38 kg)  | X                  | X             |            |                     | X          | X            |
| 3R3834-23    | 38.62" x 34.62" x 23" (98.09 x 87.93 x 58.42 cm)     | 5.12" (13 cm)     | 17.88" (45.42 cm) | 70.07 lbs (31.78 kg)  |                    | X             |            |                     |            |              |
| 3R4024-18    | 40.13" x 24" x 18.38" (101.93 x 60.96 x 46.69 cm)    | 3.88" (9.86 cm)   | 14.5" (36.83 cm)  | 51.89 lbs (23.54 kg)  |                    | X             | X          | X                   |            | X            |
| 3R4024-24    | 40.12" x 24.12" x 24.13" (101.9 x 61.26 x 61.29 cm)  | 3.88" (9.86 cm)   | 20.25" (51.44 cm) | 64.71 lbs (29.35 kg)  |                    | X             | X          | X                   |            | X            |
| 3R4035-5     | 39.7" x 35.6" x 5.25" (100.84 x 90.42 x 13.34 cm)    | 2.3" (5.84 cm)    | 2.95" (7.49 cm)   | 34.85 lbs (15.81 kg)  |                    |               |            |                     |            |              |
| 3R4222-14    | 41.75" x 22" x 14.86" (106.05 x 55.88 x 37.74 cm)    | 7.88" (20.02 cm)  | 6.98" (17.73 cm)  | 17.73 lbs (8.04 kg)   |                    |               |            |                     |            | X            |
| 3R4222-14W   | 41.75" x 22" x 14.86" (106.05 x 55.88 x 37.74 cm)    | 7.88" (20.02 cm)  | 6.98" (17.73 cm)  | 17.73 lbs (8.04 kg)   |                    | X             |            |                     |            |              |
| 3R4222-15    | 42" x 22" x 14.93" (106.68 x 55.88 x 37.92 cm)       | 3.45" (8.76 cm)   | 11.48" (29.16 cm) | 54.18 lbs (24.58 kg)  |                    |               |            |                     |            | X            |
| 3R4222-15W   | 42" x 22" x 14.93" (106.68 x 55.88 x 37.92 cm)       | 3.45" (8.76 cm)   | 11.48" (29.16 cm) | 54.18 lbs (24.58 kg)  |                    | X             |            |                     |            |              |
| 3R4222-24    | 42" x 22" x 24" (106.68 x 55.88 x 60.96 cm)          | 3.4" (8.64 cm)    | 20.6" (52.32 cm)  | 59.84 lbs (27.14 kg)  |                    | X             |            |                     |            | X            |
| 3R4238-20    | 42.25" x 38.25" x 20.25" (107.32 x 97.16 x 51.44 cm) | 3" (7.62 cm)      | 17.25" (43.82 cm) | 77.22 lbs (35.03 kg)  |                    | X             |            |                     |            |              |
| 3R4417-8     | 44" x 17" x 8" (111.76 x 43.18 x 20.32 cm)           | 3" (7.62 cm)      | 5" (12.7 cm)      | 25.41 lbs (11.53 kg)  | X                  |               |            |                     |            |              |
| 3R4530-24    | 45" x 30" x 24" (114.3 x 76.2 x 60.96 cm)            | 4" (10.16 cm)     | 20" (50.8 cm)     | 65.07 lbs (29.52 kg)  |                    | X             | X          | X                   |            | X            |
| 3R4714-10    | 47.5" x 14.38" x 10.5" (120.65 x 36.53 x 26.67 cm)   | 5" (12.7 cm)      | 5.5" (13.97 cm)   | 29.16 lbs (13.23 kg)  | X                  | X             |            |                     |            |              |
| 3R4824-18    | 48" x 24" x 18" (121.92 x 60.96 x 45.72 cm)          | 3" (7.62 cm)      | 15" (38.1 cm)     | 61.69 lbs (27.98 kg)  |                    | X             |            |                     |            |              |
| 3R4909-5     | 49" x 9" x 5.75" (124.46 x 22.86 x 14.61 cm)         | 2.375" (6.03 cm)  | 3.375" (8.57 cm)  | 19.67 lbs (8.92 kg)   |                    |               |            |                     |            |              |
| 3R5030-24    | 49.38" x 30" x 24" (125.43 x 76.2 x 60.96 cm)        | 5" (12.7 cm)      | 20" (50.8 cm)     | 71.87 lbs (32.6 kg)   |                    | X             | X          | X                   |            | X            |
| 3R5123-21    | 51.5" x 23.5" x 21.5" (130.81 x 59.69 x 54.61 cm)    | 10.75" (27.31 cm) | 10.75" (27.31 cm) | 68.65 lbs (31.14 kg)  |                    |               |            | X                   |            |              |
| 3R5212-7     | 52" x 12" x 8" (132.08 x 30.48 x 20.32 cm)           | 3" (7.62 cm)      | 5" (12.7 cm)      | 22.17 lbs (10.06 kg)  | X                  |               |            |                     |            |              |
| 3R5530-20    | 55.25" x 30.25" x 20" (140.34 x 76.84 x 50.8 cm)     | 3" (7.62 cm)      | 17" (43.18 cm)    | 77.26 lbs (35.04 kg)  |                    |               |            |                     |            |              |
| 3R6029-31    | 60" x 29" x 31.3" (152.4 x 73.66 x 79.5 cm)          | 22.3" (56.64 cm)  | 9" (22.86 cm)     | 98.72 lbs (44.78 kg)  |                    | X             |            |                     |            |              |
| 3R6218-10    | 63.5" x 18.5" x 10" (161.29 x 46.99 x 25.4 cm)       | 3" (7.62 cm)      | 7" (17.78 cm)     | 38.48 lbs (17.45 kg)  | X                  |               |            |                     |            |              |
| 3R6223-10    | 62" x 23" x 10" (157.48 x 58.42 x 25.4 cm)           | 3" (7.62 cm)      | 7" (17.78 cm)     | 49.29 lbs (22.36 kg)  | X                  |               |            |                     |            |              |
| 3R6416-8     | 64.5" x 16.5" x 8" (163.83 x 41.91 x 20.32 cm)       | 2" (5.08 cm)      | 6" (15.24 cm)     | 39.27 lbs (17.81 kg)  | X                  |               |            |                     |            |              |
| 3R6820-20    | 68" x 20" x 20.5" (172.72 x 50.8 x 52.07 cm)         | 3.5" (8.89 cm)    | 17" (43.18 cm)    | 73.12 lbs (33.17 kg)  | X                  |               |            |                     |            |              |
| 3R7408-8     | 74" x 8" x 8" (187.96 x 20.32 x 20.32 cm)            | 2.5" (6.35 cm)    | 5.5" (13.97 cm)   | 30.91 lbs (14.02 kg)  | X                  | X             |            |                     |            |              |
| 3R7532-27    | 75" x 32.5" x 27.55" (190.5 x 82.55 x 69.98 cm)      | 19.3" (49.02 cm)  | 8.25" (20.96 cm)  | 109.45 lbs (49.65 kg) | X                  |               |            |                     |            |              |
| 3R8608-8     | 86" x 8" x 8" (218.44 x 20.32 x 20.32 cm)            | 1.9" (4.83 cm)    | 6.1" (15.49 cm)   | 34.71 lbs (15.74 kg)  | X                  | X             |            |                     |            |              |

Cases described above are in-stock items offered in black. Check [skbcases.com](http://skbcases.com) for our complete lineup of case styles, sizes, customization options, and more to suit every project need.



## AUDIO SOFT RACKS

- Ideal for wireless microphone systems
- Constructed of a wood core covered by 600 Denier nylon
- Adjustable shoulder strap and loop handle for easy transport
- Recessed threaded steel rack rails
- Padded front and back lids have heavy-duty zippers

## 1SKB-SC191U

## RACK UNITS

1U

## FRONT (RAIL-TO-BACK FLAP)

14.8" (37.6 cm)

## EXTERIOR (D x W x H)

17.5" x 20.75" x 3.75"  
(44.45 x 52.71 x 9.53 cm)

## WEIGHT

6.55 lbs (2.97 kg)



| MODEL NUMBER | RACK UNITS | FRONT (RAIL-TO-BACK FLAP) | EXTERIOR (D x W x H)                               | WEIGHT             |
|--------------|------------|---------------------------|--|--------------------|
| 1SKB-SC192U  | 2U         | 14.8" (37.6 cm)           | 17.5" x 20.75" x 6.5" (44.45 x 52.71 x 16.51 cm)   | 8.95 lbs (4.06 kg) |
| 1SKB-SC193U  | 3U         | 14.5" (36.83 cm)          | 17.5" x 20.75" x 8.75" (44.45 x 52.71 x 22.22 cm)  | 9.6 lbs (4.35 kg)  |
| 1SKB-SC194U  | 4U         | 14.5" (36.83 cm)          | 17.5" x 20.75" x 10.25" (44.45 x 52.71 x 26.04 cm) | 10.15 lbs (4.6 kg) |

## ROTO SHALLOW RACKS

Rotationally molded shallow rack cases.

- Steel front/rear threaded rails
- Water resistant gasket in lids
- Full front/rear doors

- Stacks with other shallow racks or roto-molded standard depth racks

## 1SKB-R6S

## RACK UNITS

6U

## RAIL-TO-RAIL DEPTH

10.7" (27.17 cm)

## EXTERIOR (D x W x H)

16.2" x 22.4" x 12.6"  
(41.15 x 56.9 x 32 cm)

## WEIGHT

17.4 lbs (7.9 kg)



| MODEL NUMBER | RACK UNITS     | RAIL-TO-RAIL DEPTH | EXTERIOR (D x W x H)                           | WEIGHT            |
|--------------|----------------|--------------------|--|-------------------|
| 1SKB-R2S     | 2U             | 10.7" (27.17 cm)   | 16.2" x 22.4" x 5.5" (41.15 x 56.9 x 13.97 cm) | 9.2 lbs (4 kg)    |
| 1SKB-R3S     | 3U             | 10.7" (27.17 cm)   | 16.2" x 22.4" x 7.4" (41.15 x 56.9 x 18.8 cm)  | 10.4 lbs (4.7 kg) |
| 1SKB-R4S     | 4U             | 10.7" (27.17 cm)   | 16.2" x 22.4" x 9" (41.15 x 56.9 x 22.86 cm)   | 12.8 lbs (5.8 kg) |
| 1SKB-RCB     | 4-Caster Board |                    |  |                   |

A standard Rack Unit is 1.75" (4.445 cm) in height



## ROTO RACKS

Rotationally molded standard depth rack cases.

- Steel front/rear threaded rails
- Water resistant gasket in lids
- Full front/rear doors

- Stacks with other standard depth racks or roto-molded shallow racks

## 1SKB-R4U

## RACK UNITS

4U

## RAIL-TO-RAIL DEPTH

17.6" (44.96 cm)

## EXTERIOR (D x W x H)

24" x 22.4" x 9.7"  
(60.96 x 56.9 x 24.64 cm)

## WEIGHT

14.4 lbs (6.53 kg)



| MODEL NUMBER | RACK UNITS     | RAIL-TO-RAIL DEPTH | EXTERIOR (D x W x H)                          | WEIGHT              |
|--------------|----------------|--------------------|---|---------------------|
| 1SKB-R2U     | 2U             | 17.6" (44.96 cm)   | 24" x 22.4" x 6.2" (60.96 x 56.9 x 15.75 cm)  | 10.8 lbs (4.9 kg)   |
| 1SKB-R6U     | 6U             | 17.6" (44.96 cm)   | 24" x 22.4" x 13.2" (60.96 x 56.9 x 33.53 cm) | 18.4 lbs (8.53 kg)  |
| 1SKB-R8U     | 8U             | 17.6" (44.96 cm)   | 24" x 22.4" x 16.7" (60.96 x 56.9 x 42.42 cm) | 22.2 lbs (10.07 kg) |
| 1SKB-R10U    | 10U            | 17.6" (44.96 cm)   | 24" x 22.4" x 20.2" (60.96 x 56.9 x 51.31 cm) | 25.4 lbs (11.52 kg) |
| 1SKB-R12U    | 12U            | 17.6" (44.96 cm)   | 24" x 22.4" x 23.7" (60.96 x 56.9 x 60.2 cm)  | 29.2 lbs (13.24 kg) |
| 1SKB-RCB     | 4-Caster Board |                    |   |                     |

## ROTO ROLLING RACKS

Updated new design includes one-touch pull handle, back lid mounted wheels, gasket-sealed doors to keep water out, and exterior ribs that stack with existing standard and shallow racks.

## 1SKB-R4UW

## RACK UNITS

4U

## RAIL-TO-RAIL DEPTH

17.75" (45.09 cm)

## EXTERIOR (D x W x H)

26.5" x 22.5" x 11.5"  
(67.31 x 57.15 x 29.21 cm)

## WEIGHT

23 lbs (10.43 kg)



| MODEL NUMBER | RACK UNITS | RAIL-TO-RAIL DEPTH | EXTERIOR (D x W x H)                              | WEIGHT            |
|--------------|------------|--------------------|---|-------------------|
| 1SKB-R6UW    | 6U         | 17.75" (45.09 cm)  | 26.5" x 22.5" x 14.75" (67.31 x 57.15 x 37.47 cm) | 26 lbs (11.79 kg) |
| 1SKB-R8UW    | 8U         | 17.75" (45.09 cm)  | 26.5" x 22.5" x 18.25" (67.31 x 57.15 x 46.36 cm) | 29 lbs (13.15 kg) |



## INJECTION MOLDED FLY RACKS

At less than half the weight of standard shock racks, SKB Fly Racks feature iSeries watertight injection molded cases that are the perfect solution for flying or shipping delicate equipment.



Injection molded rack shells



Front/back steel rails



Lid and interior foam



TSA accessible locking latches

*i series*


| MODEL NUMBER | RACK UNITS        | RAIL-TO-RAIL DEPTH | EXTERIOR (D x W x H)                                | WEIGHT               |
|--------------|-------------------|--------------------|---|----------------------|
| 3i-2217M82U  | 2U<br>(No wheels) | 13" (33.02 cm)     | 24.32" x 19.5" x 8.86" (61.77 x 49.53 x 22.5 cm)    | 19 lbs (8.62 kg)     |
| 3i-2215M82U  | 2U                | 13" (33.02 cm)     | 24.58" x 18" x 9.65" (62.43 x 45.72 x 24.51 cm)     | 23 lbs (10.43 kg)    |
| 3i-2217M103U | 3U                | 13" (33.02 cm)     | 24.5" x 19.37" x 12.22" (62.23 x 49.2 x 31.04 cm)   | 26.6 lbs (12.07 kg)  |
| 3i-2217M124U | 4U                | 13" (33.02 cm)     | 24.34" x 19.47" x 14.38" (61.82 x 49.45 x 36.53 cm) | 28 lbs (12.7 kg)     |
| 3i-2317M146U | 6U                | 13" (33.02 cm)     | 25.63" x 19.5" x 15.63" (65.1 x 49.53 x 39.7 cm)    | 30.4 lbs (13.79 kg)  |
| 3i-2424M103U | 3U                | 20" (50.8 cm)      | 26.5" x 26.56" x 11.65" (67.31 x 67.46 x 29.59 cm)  | 33.67 lbs (15.27 kg) |
| 3i-2424M146U | 6U                | 20" (50.8 cm)      | 26.5" x 26.56" x 15.65" (67.31 x 67.46 x 39.75 cm)  | 36.77 lbs (16.68 kg) |



## SHALLOW FLY RACKS

### 3i-2011M72U

**i series**



**RACK UNITS**

2U

**RAIL-TO-RAIL DEPTH**

9" (22.86 cm)

**EXTERIOR (D x W x H)**

21.89" x 13.96" x 9"  
(55.6 x 35.46 x 22.86 cm)

**WEIGHT**

15.89 lbs (7.21 kg)



### 3i-2011M103U

**i series**



**RACK UNITS**

3U

**RAIL-TO-RAIL DEPTH**

9" (22.86 cm)

**EXTERIOR (D x W x H)**

22" x 14" x 12"  
(55.88 x 35.56 x 30.48 cm)

**WEIGHT**

17.83 lbs (8.09 kg)



### 3i-2213M124U

**i series**



**RACK UNITS**

4U

**RAIL-TO-RAIL DEPTH**

9" (22.86 cm)

**EXTERIOR (D x W x H)**

24.18" x 15.52" x 13.65"  
(61.42 x 39.42 x 34.67 cm)

**WEIGHT**

22.21 lbs (10.07 kg)





## FLY RACKS

These fly racks are housed in our military grade iSeries waterproof cases and feature removable aluminum alloy rack cages with 11 gauge carbon steel rack rails.

## 3i-22221210U

**i series**

Provides 10 units of rack space in a foam-protected waterproof iSeries case.

**RACK UNITS**  
10U

**RAIL-TO-RAIL DEPTH**  
10" (25.4 cm)

**EXTERIOR (D x W x H)**  
22.5" x 22.5" x 12.5"  
(57.15 x 57.15 x 31.75 cm)

**WEIGHT**  
36.4 lbs (16.51 kg)



## 3i-221710WMC

**i series**

Provides 2 units of rack space and cut outs for 4 wireless hand held transmitters, 4 body pack transmitters, and additional accessories all in one case.

**RACK UNITS**  
2U

**RAIL-TO-RAIL DEPTH**  
13" (33.02 cm)

**EXTERIOR (D x W x H)**  
24.5" x 19.37" x 12.22"  
(62.23 x 49.2 x 31.04 cm)

**WEIGHT**  
25.35 lbs (11.5 kg)



## 3i-231714WMC

**i series**

Features a 4U injection molded rack frame with space below for four wireless handheld transmitters and four body pack transmitters, with additional space for smaller accessories.

**RACK UNITS**  
4U

**RAIL-TO-RAIL DEPTH**  
13" (33.02 cm)

**EXTERIOR (D x W x H)**  
25.75" x 19.5" x 15.5"  
(65.41 x 49.53 x 39.37 cm)

**WEIGHT**  
30.46 lbs (13.82 kg)





## MILITARY-GRADE SHOCK RACKS

All military-grade shock racks are rotationally molded for maximum impact resistance, and feature the latest in shockmount technology with elastomeric shocks, threaded steel rails, and aluminum cross components

for strength and durability. All models of Shock Racks have EIA standard 19" rack widths with rear rails and covers for support and accessibility, and include standard payload ranges from 40 lbs to 150 lbs.

- Gasket-sealed doors for water resistance
- Heavy-duty stainless steel hardware
- Casters and built-in wheels standard on some models

## 20" ROTO-MOLDED SHOCK RACKS

| MODEL NUMBER | RACK UNITS  | RAIL-TO-RAIL DEPTH | EXTERIOR (D x W x H)                             | WEIGHT             |
|--------------|-------------|--------------------|--|--------------------|
| 1SKB-R904U20 | 4U          | 20" (50.8 cm)      | 27.75" x 27" x 15.63" (70.48 x 68.58 x 39.7 cm)  | 36 lbs (16.3 kg)   |
| 1SKB-R906U20 | 6U          | 20" (50.8 cm)      | 27.75" x 27" x 19.13" (70.48 x 68.58 x 48.59 cm) | 43.3 lbs (19.6 kg) |
| 1SKB-R908U20 | 8U          | 20" (50.8 cm)      | 29" x 27.75" x 22.63" (73.66 x 70.48 x 57.48 cm) | 46.5 lbs (21.1 kg) |
| 1SKB-R910U20 | 10U         | 20" (50.8 cm)      | 29" x 27.75" x 26.13" (73.66 x 70.48 x 66.37 cm) | 54.4 lbs (24.6 kg) |
| 1SKB-R912U20 | 12U         | 20" (50.8 cm)      | 29" x 27.75" x 29.63" (73.66 x 70.48 x 75.2 cm)  | 57 lbs (25.85 kg)  |
| 1SKB-R914U20 | 14U         | 20" (50.8 cm)      | 29" x 27.88" x 33" (73.66 x 70.81 x 83.82 cm)    | 68.6 lbs (31 kg)   |
| 1SKB-R916U20 | 16U         | 20" (50.8 cm)      | 29" x 27.25" x 36.6" (73.66 x 69.21 x 92.9 cm)   | 76 lbs (34.47 kg)  |
| 1SKB-1916    | Caster Cart |                    |  |                    |

35

## 20" ROTO ROLLING SHOCK RACKS

## 3SKB-R04U20W

**RACK UNITS**  
4U

**FRONT (RAIL-TO-BACK FLAP)**  
20" (50.8 cm)

**EXTERIOR (D x W x H)**  
28.5" x 28" x 16"  
(72.39 x 71.12 x 40.64 cm)

**WEIGHT**  
44.3 lbs (20.1 kg)



| MODEL NUMBER | RACK UNITS | RAIL-TO-RAIL DEPTH | EXTERIOR (D x W x H)                           | WEIGHT             |
|--------------|------------|--------------------|--|--------------------|
| 3SKB-R06U20W | 6U         | 20" (50.8 cm)      | 28.5" x 28" x 19.5" (72.39 x 71.12 x 49.53 cm) | 50.7 lbs (23 kg)   |
| 3SKB-R08U20W | 8U         | 20" (50.8 cm)      | 30.5" x 28" x 23" (77.47 x 68.58 x 58.42 cm)   | 56.7 lbs (25.7 kg) |
| 3SKB-R10U20W | 10U        | 20" (50.8 cm)      | 30.5" x 28" x 26.5" (77.47 x 68.58 x 67.31 cm) | 61.7 lbs (28 kg)   |
| 3SKB-R12U20W | 12U        | 20" (50.8 cm)      | 30.5" x 28" x 30" (77.47 x 68.58 x 76.2 cm)    | 68 lbs (30.8 kg)   |



## 24", 28" AND 30" SHOCK RACKS



Corner elastomer shock mounts

4" removable casters  
on aluminum plateSquare rack mounting holes  
on 28" deep rack versions

## 3SKB-R904U24

**RACK UNITS**  
4U**RAIL-TO-RAIL DEPTH**  
24" (61 cm)**WEIGHT**  
58 lbs (26.3 kg)**RAIL TYPE**  
Threaded**EXTERIOR (D x W x H)**  
36" x 26.75" x 16.25"  
(91.44 x 67.95 x 41.28 cm)

| MODEL NUMBER | RACK UNITS | RAIL TYPE   | RAIL-TO-RAIL DEPTH | EXTERIOR (D x W x H)                              | WEIGHT                |
|--------------|------------|-------------|--------------------|---|-----------------------|
| 3SKB-R906U24 | 6U         | Threaded    | 24" (61 cm)        | 36" x 26.75" x 19.5" (91.44 x 67.95 x 49.53 cm)   | 66.7 lbs (30.2 kg)    |
| 3SKB-R908U24 | 8U         | Threaded    | 24" (61 cm)        | 36" x 26.75" x 23.25" (91.44 x 67.95 x 59.06 cm)  | 74.7 lbs (33.9 kg)    |
| 3SKB-R910U24 | 10U        | Threaded    | 24" (61 cm)        | 36" x 26.75" x 27" (91.44 x 67.95 x 68.58 cm)     | 79.9 lbs (36.2 kg)    |
| 3SKB-R912U24 | 12U        | Threaded    | 24" (61 cm)        | 36" x 26.75" x 30.5" (91.44 x 67.95 x 77.47 cm)   | 83.25 lbs (37.76 kg)  |
| 3SKB-R914U24 | 14U        | Threaded    | 24" (61 cm)        | 36" x 26.75" x 34" (91.44 x 67.95 x 86.36 cm)     | 94.15 lbs (107 kg)    |
| 3SKB-R916U24 | 16U        | Threaded    | 24" (61 cm)        | 36" x 26.75" x 37.5" (91.44 x 67.95 x 41.28 cm)   | 102.55 lbs (46.52 kg) |
| 3SKB-R904U28 | 4U         | Square Hole | 29.25" (74.3 cm)   | 42" x 26.75" x 16.25" (106.68 x 67.95 x 41.28 cm) | 60.75 lbs (27.56 kg)  |
| 3SKB-R906U28 | 6U         | Square Hole | 29.25" (74.3 cm)   | 42" x 26.75" x 19.5" (106.68 x 67.95 x 49.53 cm)  | 66.75 lbs (30.28 kg)  |
| 3SKB-R908U28 | 8U         | Square Hole | 29.25" (74.3 cm)   | 42" x 26.75" x 23.25" (106.68 x 67.95 x 59.06 cm) | 76.8 lbs (34.84 kg)   |
| 3SKB-R910U28 | 10U        | Square Hole | 29.25" (74.3 cm)   | 42" x 26.75" x 27.25" (106.68 x 67.95 x 69.22 cm) | 79.85 lbs (36.22 kg)  |
| 3SKB-R904U30 | 4U         | Threaded    | 30" (76.2 cm)      | 42" x 26.75" x 16.25" (106.68 x 67.95 x 41.28 cm) | 60.75 lbs (27.56 kg)  |
| 3SKB-R906U30 | 6U         | Threaded    | 30" (76.2 cm)      | 42" x 26.75" x 19.5" (106.68 x 67.95 x 49.53 cm)  | 66.75 lbs (30.28 kg)  |
| 3SKB-R908U30 | 8U         | Threaded    | 30" (76.2 cm)      | 42" x 26.75" x 23.25" (106.68 x 67.95 x 59.06 cm) | 76.8 lbs (34.84 kg)   |
| 3SKB-R910U30 | 10U        | Threaded    | 30" (76.2 cm)      | 42" x 26.75" x 27.25" (106.68 x 67.95 x 69.22 cm) | 79.85 lbs (36.22 kg)  |



## 3RS SERIES RACKS

When maximum shock isolation is needed but a sliding frame is not, this static rack case provides the best performance with the smallest exterior dimension footprint for this depth.

### 3RS-3U24-25B

Static shock racks with square hole rails.

#### RACK UNITS

3U

#### LID DEPTH FRONT

2" (5.1 cm)

#### RACK HEIGHT

5.5" (14 cm)

#### LID DEPTH REAR

5" (12.7 cm)

#### RAIL-TO-RAIL DEPTH

24" (60.96 cm)

#### WEIGHT

47 lbs (21.32 kg)



| MODEL NUMBER  | RACK UNITS | RACK HEIGHT      | RAIL-TO-RAIL DEPTH | LID DEPTH FRONT | LID DEPTH REAR | WEIGHT               |
|---------------|------------|------------------|--------------------|-----------------|----------------|----------------------|
| 3RS-3U20-22B  | 3U         | 5.25" (13.3 cm)  | 20" (50.8 cm)      | 2" (5.1 cm)     | 2" (5.1 cm)    | 34.93 lbs (15.84 kg) |
| 3RS-4U20-22B  | 4U         | 7" (17.8 cm)     | 20" (50.8 cm)      | 2" (5.1 cm)     | 2" (5.1 cm)    | 37.6 lbs (17.06 kg)  |
| 3RS-5U20-22B  | 5U         | 8.75" (22.2 cm)  | 20" (50.8 cm)      | 2" (5.1 cm)     | 2" (5.1 cm)    | 39.73 lbs (18.02 kg) |
| 3RS-6U20-22B  | 6U         | 10.5" (26.7 cm)  | 20" (50.8 cm)      | 2" (5.1 cm)     | 2" (5.1 cm)    | 43.37 lbs (19.67 kg) |
| 3RS-7U20-22B  | 7U         | 12.25" (31.1 cm) | 20" (50.8 cm)      | 2" (5.1 cm)     | 2" (5.1 cm)    | 46 lbs (20.87 kg)    |
| 3RS-9U20-22B  | 9U         | 15.75" (40 cm)   | 20" (50.8 cm)      | 2" (5.1 cm)     | 2" (5.1 cm)    | TBA                  |
| 3RS-11U20-22B | 11U        | 19.25" (48.9 cm) | 20" (50.8 cm)      | 2" (5.1 cm)     | 2" (5.1 cm)    | TBA                  |
| 3RS-14U20-22B | 14U        | 24.5" (62.2 cm)  | 20" (50.8 cm)      | 2" (5.1 cm)     | 2" (5.1 cm)    | 64 lbs (29.03 kg)    |
| 3RS-4U24-25B  | 4U         | 7" (17.8 cm)     | 24" (60.96 cm)     | 2" (5.1 cm)     | 5" (12.7 cm)   | 49.4 lbs (22.41 kg)  |
| 3RS-5U24-25B  | 5U         | 8.75" (22.2 cm)  | 24" (60.96 cm)     | 2" (5.1 cm)     | 5" (12.7 cm)   | 49.04 lbs (22.24 kg) |
| 3RS-7U24-25B  | 7U         | 12.25" (31.1 cm) | 24" (60.96 cm)     | 2" (5.1 cm)     | 5" (12.7 cm)   | 50.54 lbs (22.92 kg) |
| 3RS-9U24-25B  | 9U         | 15.75" (40 cm)   | 24" (60.96 cm)     | 2" (5.1 cm)     | 5" (12.7 cm)   | 76.6 lbs (34.75 kg)  |
| 3RS-11U24-25B | 11U        | 19.25" (48.9 cm) | 24" (60.96 cm)     | 2" (5.1 cm)     | 5" (12.7 cm)   | 70 lbs (31.75 kg)    |
| 3RS-14U24-25B | 14U        | 24.5" (62.2 cm)  | 24" (60.96 cm)     | 2" (5.1 cm)     | 5" (12.7 cm)   | 71 lbs (32.21 kg)    |
| 3RS-3U30-25B  | 3U         | 5.5" (14 cm)     | 30" (76.2 cm)      | 2" (5.1 cm)     | 5" (12.7 cm)   | 50.4 lbs (22.86 kg)  |
| 3RS-4U30-25B  | 4U         | 7" (17.8 cm)     | 30" (76.2 cm)      | 2" (5.1 cm)     | 5" (12.7 cm)   | 54.3 lbs (24.63 kg)  |
| 3RS-5U30-25B  | 5U         | 8.75" (22.2 cm)  | 30" (76.2 cm)      | 2" (5.1 cm)     | 5" (12.7 cm)   | 55.08 lbs (24.98 kg) |



### 3RR SERIES RACKS

When maximum shock isolation is needed with a sliding rack, this removable rack case provides the best performance with the smallest exterior dimension footprint for this depth.

#### 3RR-3U24-25B

Removable shock rack with patented “positive lock” latching system that slides open like a drawer.

**RACK UNITS**  
3U

**RACK HEIGHT**  
5.25" (13.3 cm)

**RAIL-TO-RAIL DEPTH**  
24" (60.96 cm)

**LID DEPTH FRONT**  
2" (5.1 cm)

**LID DEPTH REAR**  
5" (12.7 cm)

**WEIGHT**  
57 lbs (25.85 kg)



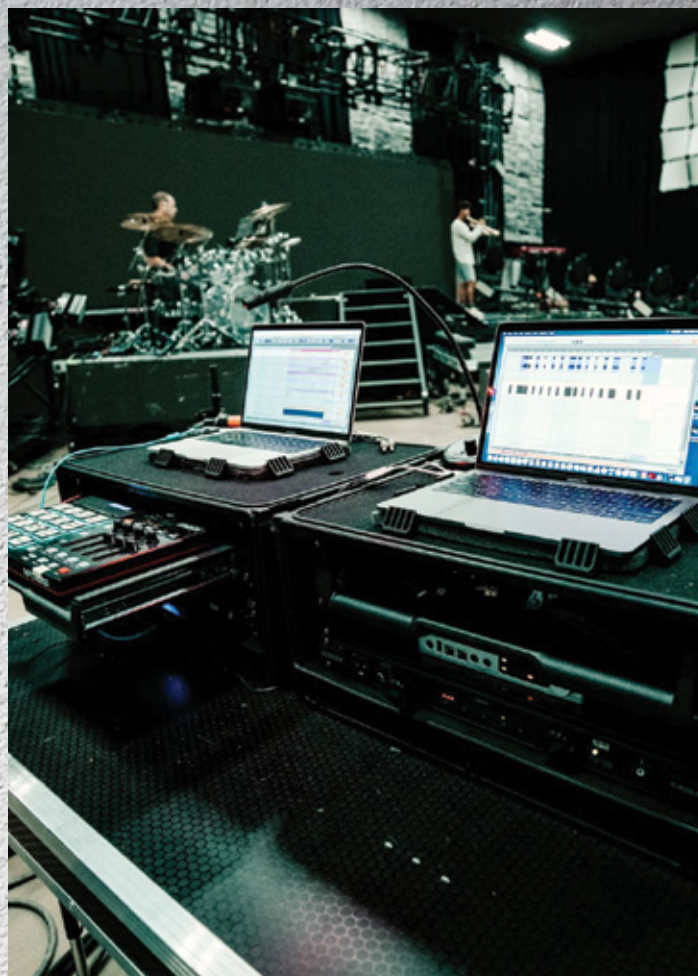
| MODEL NUMBER  | RACK UNITS | RACK HEIGHT      | RAIL-TO-RAIL DEPTH | LID DEPTH FRONT | LID DEPTH REAR | WEIGHT               |
|---------------|------------|------------------|--------------------|-----------------|----------------|----------------------|
| 3RR-3U20-22B  | 3U         | 5.25" (13.3 cm)  | 20" (50.8 cm)      | 2" (5.1 cm)     | 2" (5.1 cm)    | 34.93 lbs (15.84 kg) |
| 3RR-4U20-22B  | 4U         | 7" (17.8 cm)     | 20" (50.8 cm)      | 2" (5.1 cm)     | 2" (5.1 cm)    | 36.69 lbs (16.64 kg) |
| 3RR-5U20-22B  | 5U         | 8.75" (22.2 cm)  | 20" (50.8 cm)      | 2" (5.1 cm)     | 2" (5.1 cm)    | 39.73 lbs (18.02 kg) |
| 3RR-6U20-22B  | 6U         | 10.5" (26.7 cm)  | 20" (50.8 cm)      | 2" (5.1 cm)     | 2" (5.1 cm)    | 43.37 lbs (19.67 kg) |
| 3RR-7U20-22B  | 7U         | 12.25" (31.1 cm) | 20" (50.8 cm)      | 2" (5.1 cm)     | 2" (5.1 cm)    | 45.85 lbs (20.8 kg)  |
| 3RR-9U20-22B  | 9U         | 15.75" (40 cm)   | 20" (50.8 cm)      | 2" (5.1 cm)     | 2" (5.1 cm)    | 61.56 lbs (27.92 kg) |
| 3RR-11U20-22B | 11U        | 19.25" (48.9 cm) | 20" (50.8 cm)      | 2" (5.1 cm)     | 2" (5.1 cm)    | 68.62 lbs (31.13 kg) |
| 3RR-14U20-22B | 14U        | 24.5" (62.2 cm)  | 20" (50.8 cm)      | 2" (5.1 cm)     | 2" (5.1 cm)    | 75.81 lbs (34.39 kg) |
| 3RR-4U24-25B  | 4U         | 7" (17.8 cm)     | 24" (60.96 cm)     | 2" (5.1 cm)     | 5" (12.7 cm)   | 66.8 lbs (30.3 kg)   |
| 3RR-5U24-25B  | 5U         | 8.75" (22.2 cm)  | 24" (60.96 cm)     | 2" (5.1 cm)     | 5" (12.7 cm)   | 66 lbs (29.94 kg)    |
| 3RR-7U24-25B  | 7U         | 12.25" (31.1 cm) | 24" (60.96 cm)     | 2" (5.1 cm)     | 5" (12.7 cm)   | 68.6 lbs (31.12 kg)  |
| 3RR-9U24-25B  | 9U         | 15.75" (40 cm)   | 24" (60.96 cm)     | 2" (5.1 cm)     | 5" (12.7 cm)   | 64.8 lbs (29.39 kg)  |
| 3RR-11U24-25B | 11U        | 19.25" (48.9 cm) | 24" (60.96 cm)     | 2" (5.1 cm)     | 5" (12.7 cm)   | 83.2 lbs (37.74 kg)  |
| 3RR-14U24-25B | 14U        | 24.5" (62.2 cm)  | 24" (60.96 cm)     | 2" (5.1 cm)     | 5" (12.7 cm)   | 94.8 lbs (43 kg)     |
| 3RR-3U30-25B  | 3U         | 5.25" (13.3 cm)  | 30" (76.2 cm)      | 2" (5.1 cm)     | 5" (12.7 cm)   | 63.2 lbs (28.67 kg)  |
| 3RR-4U30-25B  | 4U         | 7" (17.8 cm)     | 30" (76.2 cm)      | 2" (5.1 cm)     | 5" (12.7 cm)   | 66.6 lbs (30.21 kg)  |
| 3RR-5U30-25B  | 5U         | 8.75" (22.2 cm)  | 30" (76.2 cm)      | 2" (5.1 cm)     | 5" (12.7 cm)   | 68.6 lbs (31.12 kg)  |





## LIFETIME WARRANTY

SKB injection-molded, roto-molded, and ATA-rated hard case products are fully warranted against defects in materials and craftsmanship to the original owner for the lifetime of the case. SKB will repair or replace any product found to be defective, however SKB DOES NOT REPLACE CASES FOR DAMAGED HARDWARE. All locks, handles, and wheels are designed to be field replaceable, take just minutes to install, and will be supplied to you at no charge via US mail.



## SKB 5-YEAR WARRANTY

Cases with our 5-Year Warranty are warranted for five (5) years to the original owner against defects in materials and craftsmanship. Any defects in workmanship will be covered by SKB. Damages due to accident, improper care, negligence, or normal wear—where SKB is not at fault—are not covered.



## SKB SOFT PRODUCT WARRANTY

SKB soft products are fully warranted to the original owner against defects in materials and craftsmanship for one (1) year from purchase. Any defects in workmanship will be covered by SKB. Damages due to accident, improper care, negligence, or normal wear—where SKB is not at fault—are not covered.

For parts requests or more information on SKB's warranty policies, please contact our customer service department at (800) 654-5992.





## SKB USA

434 W. Levers Place  
Orange, CA 92867  
ph: (714) 637-1252

[www.skbcases.com](http://www.skbcases.com)

## SKB EUROPE

Hamelendijk 2  
5541 RA Reusel  
Netherlands  
ph: +31 (0) 497 339 836

[www.skbcases.com](http://www.skbcases.com)

## SKB MIDDLE EAST - AFRICA

Business Center  
Dubai World Central  
PO Box 390667  
Dubai, UAE  
[sales@skbcases-mea.com](mailto:sales@skbcases-mea.com)

[www.skbcases-mea.com](http://www.skbcases-mea.com)

