

Specification

Product Model			RGB12X-NDI-WH	RGB20X-NDI-WH	
Product Name			12X NDI Camera	20X NDI Camera	
Performance	Camera	Optical Zoom	12X f= 3.9 ~ 46.8mm	20X f= 5.5 ~ 110mm	
		View Angle	6.3° ~ 72.5°	3.3° ~ 54.7°	
		AV	F1.8 ~ F2.4	F1.6 ~ F3.5	
		Digital Zoom	10X		
		Minimum Illumination	0.5 lux （F1.8,AGC ON）		
		DNR	2D & 3D DNR		
		White Balance	Auto / Manual/ One Push/ 3000K/3500K/4000K/4500K/5000K/5500K/6000K/6500K/7000K		
		Focus/Aperture/ Electronic Shutter	Auto/Manual		
		BLC	ON/OFF		
		WDR	OFF/ Dynamic level adjustment		
		Video Adjustment	Brightness,Color,Saturation,Contrast,Sharpness,B/W mode,Gamma curve		
		SNR	>55dB		
		Effective Pixels	2.07m,16:9		
	Pan-and-Tilt Parameter	Pan/Tilt Movement	-170° ~ +170°/'-30° ~ +90°		
		Pan/Tilt Control Speed	0.1 ~ 60°/S, 0.1 ~ 30°/S		
		Preset Speed/Quantity	Pan:60°/S,Tilt:30°/S;Up to 255 preset positions(10 remote control)		
	Audio Compression Format		AAC、MP3、G.711A		
	Video Compression Format		H.264、H.265,Dual Streaming Output		
	Output Resolutions		720p25/29.97/30/50/59.94/60   1080p25/30/29.97/30/50/59.94/60		
	Control Protocol		VISCA   Pelco-D   Pelco-P		
	Baud Rate (bps)		115200   9600   4800   2400bps		
	Network Protocol		NDI   RTSP   RTMP   ONVIF   GB/T28181		
Connectors	Supported Standards	HDMI	1.3		
		SDI	SMPTE 425M (Level A & B)   SMPTE 424M   SMPTE 292M   SMPTE 259M-C   DVB-ASI		
	Video(Output)	HDMI	1×HDMI-A		
		SDI	1×BNC		
		NDI	1×RJ45		
	Audio	Input	1×3.5mm Stereo Jack		
	Communication	RS232	2×DIN 8		
		RS485	1×2 Pin Terminal Connector		
		Network	1×100Mbps(10/100BASE-TX)		
	Power		1×HEC3800 DC Socket		
Power	Input Voltage	DC12V/1.5A			
	Max Power	12W			
Environment	Temperature	-10℃ ~ 50℃			
	Humidity	20% ~ 80%			
Physical	Weight	Net	1.4kg		
	Dimension	Net	150mm×150mm×167.5mm		

Order Codes

Product Code	Item
981-0011-03-0	RGB12X-NDI-WH 12X NDI Camera
981-0011-04-0	RGB20X-NDI-WH 20X NDI Camera



WEB: [www.rgblink.com](http://www.rgblink.com) EMAIL: [sales@rgblink.com](mailto:sales@rgblink.com) PHONE: +86 592 5771197  
Proudly designed and manufactured in **Xiamen** Hi Technology Zone, China

090-0000-00-0-E

**RGBlink®**  
[www.rgblink.com](http://www.rgblink.com)



PTZ Camera with NDI  
RGB12X-NDI-WH | RGB20X-NDI-WH



Pro Camera Range





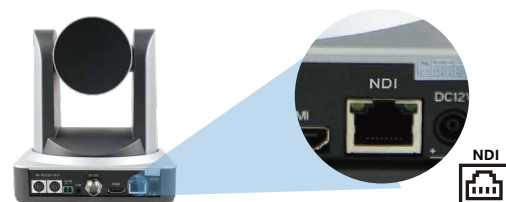
## Precise Head Control

With built-in high precision motor drive control, the camera can be re-positioned in under a second by 60 degrees and a zoom speed of 0.1 degree. Whether large movement or small, multi-speed movement is not only smooth and accurate, but super quiet. Automatic focussing powered with advanced algorithms enhances overall performance aiding ease of operation.



## NDI Video Output

Video over IP via NDI is built right into these cameras, enabling quick and ease integration with professional broadcast suites as well as popular NDI enabled platforms such as Zoom.



## 12X/20X Optical Zoom

With a choice of two models, RGBlink PTZ cameras offer embedded 2D & 3D noise reduction and ISP image processing technology. The result is clear, vivid and balance video regardless of zoom angle.



## Professional NDI Camera

Whether outputting to HDMI, SDI or NDI, RGBlink PTZ cameras provide a host of onboard features and functions. Advanced ISP image processing and algorithms enhance image performance from the sensor, encoding for smooth and stabilised video regardless of bandwidth selected.

Full 340 degree horizontal and 120 degree vertical range along with up to wide 72.5 degree viewing angle are provided, making RGBlink cameras suitable for demanding applications whether short throw or long.



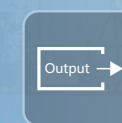
12X/20X Optical



Multi-protocol API/VISCA



pan-and-tilt rotation



HDMI/RS232 Audio/IP/3G-SDI



1080p60 Full HD



1-year Warranty 3-years of paid maintenance

## Multi-Scene Preset

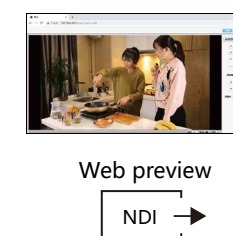
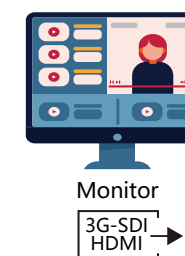
Create and store up to 255 presets with position, zoom and focus via the web interface. Assign presets to buttons for instant recall.



Up to 255 preset positions

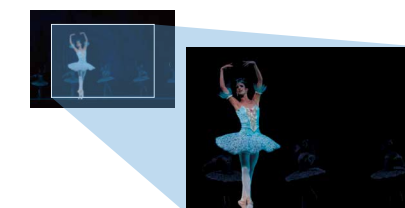
## Web Preview

Preview video and control camera via the web-browser based interface simply by connecting on a LAN. Use any video output for monitoring.



## High Sensitivity

Capture video even in low light – from as little as 0.5 Lux. The cameras sensor adapts and optimises across the full range of light and dark environments.



## Full Interface Multi-Protocol

RGBlink PTZ cameras offer wide compatibility and interconnectivity in support of the broad range of application possibilities. Video connections are provided for SDI and HDMI as well as for IP based protocols. Control protocols include RTSP, VISCA and PELCO.