

**The fascination
of flash photography.**

2012 / 2013

Contents

04 Company

06 Flash tips

08 System flash units

- 08 ▶ mecablitz 58 AF-2 digital
- 10 ▶ mecablitz 52 AF-1 digital
- 12 ▶ mecablitz 44 AF-1 digital
- 14 ▶ mecablitz 36 AF-5 digital
- 15 ▶ mecablitz 24 AF-1 digital

16 Specialist flash units

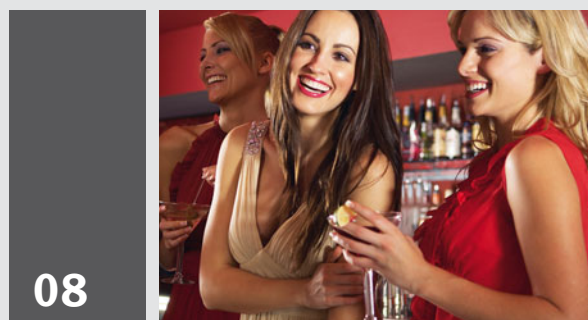
- 16 ▶ mecablitz 76 MZ-5 with SCA
- 18 ▶ mecablitz 15 MS-1 digital
- 20 ▶ mecablitz 28 CS-2 digital
- 22 ▶ mecablitz 36 C-2 digital
- 23 ▶ mecablitz 20 C-2 digital

24 mecablitz accessories

- 24 ▶ mecabounce diffuser attachments
- 24 ▶ Easy soft boxes with accessories
- 25 ▶ Mini soft boxes / Mini Octagon soft boxes
- 25 ▶ Spot reflector umbrellas / reflector umbrellas
- 26 ▶ SCA adapters and accessories
- 26 ▶ TTL connection cable / flash shoe adapter
- 27 ▶ Sync cable / camera rails
- 28 ▶ Power pack / rechargeable batteries and charger sets
- 29 ▶ mecalux 11 / adapter rings / cases

32 Technology

- 32 ▶ Technical specifications
- 34 ▶ Technical glossary



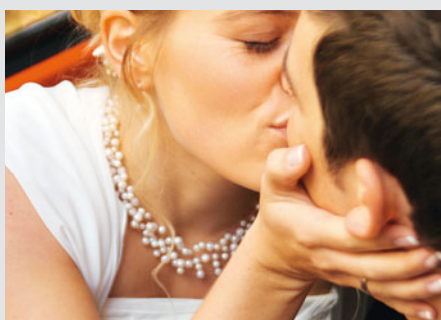
System flash units

Capturing the perfect shot is now even easier with powerful Metz system flash units – your convenient fully automatic device ensures optimal illumination for every picture. Whether amateur or professional: there's the right model to meet any requirements and user-friendly operation makes even sophisticated flash techniques child's play.



**Brilliant light for
the perfect moment.**

16



Specialist flash units

Regardless of whether you prefer to take digital or analogue photos, Metz has the perfect flash unit to tackle any challenge – whether multi-purpose flash units with SCA adapter for different cameras, handy compact automatic flash units or slave/servo flash units for creative macro lighting design.

24



Miscellaneous accessories

Metz provides a comprehensive range of accessories for all flash unit requirements – from rechargeable batteries and charging units for power supply, to technical equipment such as TTL or sync cables, and equipment for professional flash scenarios using reflector umbrellas and soft boxes. Many accessories are also compatible with non-Metz flash units.

Tradition with a focus on the future.

MECABLITZ
Die ersten und einzigen Blitzgeräte der Welt mit selbstleuchtendem SONNENLICHTFILTER und BLENDENMESSER

Durch die folgenden einmaligen Neuerungen und Vorzüge der Metz-Elektronenblitzgeräte macht Ihnen die Photojagd mit einem Mecablitz noch mal soviel Freude.

Farbkorrigiert
durch selbstleuchtendes Sonnenlichtfilter – deshalb erstmals völlig farbgetreue Coloraufnahmen ganz ohne Farbstich.

Lichtstärker
deshalb keine verlängerte Entwicklungszeit mehr – Tageslicht- und Blitzaufnahmen auf einem Film können nun gleich lang entwickelt werden.

Komfortabler
durch fehlersichere, automatische Umschaltung – stellt selbsttätig, ohne Schalter oder Taste, von Akkubetrieb auf Lade- bzw. Netzbetrieb um.

Die eingestellte Lichtleistung wird beim Mecablitz 50 und 50 S durch zwei Signallampen im Blitzstab angezeigt. Deshalb keine Fehlaufnahmen mehr durch falsches Einstellen der Lichtleistung.

MECABLITZ 50
Akku-Netzgerät mit umschaltbarer Lichtleistung
Ausleuchtung von 1 bis 25 m durch umschaltbare Lichtleistung
Eingebaute Ladeeinrichtung - 110 / 127 / 220 V - Unzerbrechliches Polymidgehäuse - Elektr. Energie 120 Ws - Blitzfolge 9 bzw. 5 Sek. - 75 bzw. 150 Blitze pro Ladung - Leitbahnen für normale Entwicklungszeit: 50 bzw. 25 bei 17/10 DIN, Color 20-24 bzw. 8-10.
DM 210.—

MECABLITZ 50 S
Das „denkende“ Luxus-Blitzgerät mit eingebautem Blendenmesser und Weitwinkelumschaltung
Der Blendenmesser zeigt für alle Filmarten und Empfindlichkeiten die richtige Blende an und mißt die Entfernung - Die Weitwinkelumschaltung des Reflektors von 46° auf 60° ermöglicht ideal gleichmäßig ausgeleuchtete Normal- und Weitwinkelaufnahmen - Technische Daten wie Mecablitz 50.
DM 228.—

MECABLITZ 32
Handliches Blitzgerät für Batterie-Akku-Netzbetrieb
4 Monozellen 1,5 V oder wahlweise Akku 4 V 3 Ah - ca. 80 Blitze/richtung - ca. 150 Blitze/Akkuladung - Eingebaute Ladeeinrichtung - 110 - 127 / 220 V - Elektr. Energie 60 Ws - Blitzfolge 12 bzw. 8 Sek. - Leitbahnen für normale Entwicklungszeit: 30 bei 17/10 DIN, Color 13 - 16. Ohne Batterien und Akku DM 129.—
Spezialzelle 1,5 V DM 0,85 Kippständerer Akku 4 Volt DM 20,50

MECABLITZ 32 A
Preiswertes Blitzgerät für 2 Volt-Akkubetrieb
Eingebaute Ladeeinrichtung - Elektrische Energie ca. 60 Ws - ca. 40 Blitze pro Ladung - Leitbahnen und Form wie Mecablitz 32. Komplette mit Akku 2 Volt 2,5 Ah. DM 138.—

MECATWIN 50
Reizvolle Beleuchtungseffekte erzielen Sie mit dem Zweitblitzstab Meccatwin - Der Meccatwin 50 erhöht die Gesamtleistung auf 150 Ws - Verzögerungsstrome Folgezündung.
DM 78.—

Fragen Sie im Photofachgeschäft und verlangen Sie den farbigen Mecablitz-Prospekt.

METZ
RADIO · FERNSEHEN · PHOTO · FÜRTH · BAY.





We have a long-standing tradition of innovation.

The name Metz has been synonymous with professional flash units for decades. Our company's exceptional reputation has been shaped by numerous technical innovations – such as the use of USB connections which allow flash units within the camera system to be updated for the latest camera model even after purchase. Today, we offer a diverse range of products from convenient compact flashes right through to powerful handheld flash guns.



A focus on quality.

Whether light output, convenience of use or reliability, the first-class quality of Metz flash units is unquestionable – as proven in numerous independent tests. In order to ensure this high standard in the future too, our products are predominantly developed and produced at our site in Germany. The technical perfection of our products is based on highly-qualified employees and systematic quality management.



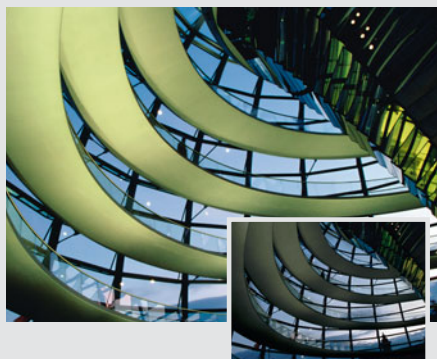
Technical perfection.

Metz flash units are highly regarded around the world – among amateur and professional photographers alike. After all, we develop products which satisfy the standards of tomorrow, today. The use of high-quality components in conjunction with cutting-edge, high-tech manufacturing processes ensures that our products can always be relied upon. Our know-how and experience also guarantee technical perfection for the future.

Brilliant light for the perfect moment.

Using a flash no longer simply means making a dark subject lighter. Anyone using additional light when taking a shot can creatively manipulate the light to suit their requirements – aiming it directly at the subject, indirect flash with a reflector, or even flash “without constraints” with devices that can be used independently of the camera. Many Metz flash units make it possible to calibrate light levels, weighting them as desired to deliver just the right mood lighting. Even by day, the right flash can deliver better photos; brightening shadows or contre-jour to give pictures undreamt of sharpness and brilliance.

Flash tip



Spanning great distances

Thanks to digital flash control (e.g. E-TTL) the light output of a Metz system flash unit can be controlled via the camera. In order to preserve the ambient mood lighting, the shutter speed should be longer than the flash sync speed – but no longer than $\frac{1}{60}$ second for portraits.



Bouncing flash

When it comes to portraits, turning or rotating the reflector head for a bouncing flash can be highly effective. Light can be deflected via a special reflector umbrella or a flip-out reflector card integrated into the flash unit itself – to create soft harmonious lighting.

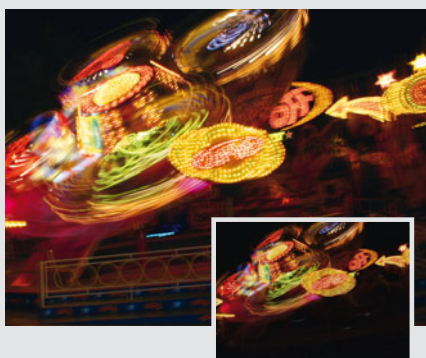


Your subject in the best possible light.



Contre-jour flash

Manipulated with skill, contre-jour can deliver interesting lighting effects. Using a flash is a must. Reducing the f-stop by one or two points makes it possible to retain the character of the ambient light. The higher the guide number, the greater the range of the flash unit.



Long shutter speeds

Get creative and try taking shots with longer exposure times than sync times. In this way, moving subjects can, in around one second, create interesting blur effects and a corresponding lightening of the foreground.



“Off-camera flash”

Slave flash mode is perfect for particularly creative lighting design. This involves the positioning and use of an external flash unit wherever required, and entirely without the need for a cable. This can create interesting light accents – or with the use of several slaves, the split lighting of subject and background.

mecablitz 58 AF-2 digital



Genuine flash star.

Top model with new fine tuning.

A compact flash that leaves no wish unfulfilled. The “flash unit of the year 2010” impresses with its perfect workmanship and multifaceted functionality. Of particular note is the innovative secondary flash which is fully integrated with the camera’s photometer. Designed with portrait photography in mind, it ensures subjects are lit to perfection. Moreover, the innovative high performance unit boasts a USB interface which enables the specific firmware for each model variant to be conveniently updated via computer and Internet. It looks sleek, artfully meters the flash and is both intuitive and impressively powerful. Equipped with smart developments, the Metz mecablitz 58 AF-2 digital offers genuine high performance energy management, multiple zone AF flash metering and a fully pivoting reflector system. Depending on the version, the Metz top model works with the appropriate camera-specific system flash modes for Canon, Nikon, Pentax, Olympus/Panasonic and Sony cameras including respective wireless TTL modes.



CANON

NIKON

OLYMPUS

PANASONIC

PENTAX

SONY

Flash output

- High max. guide number 58 (meters), High max. guide number 190 (feet) for ISO 100/21° and 105 mm

Basic configuration

- Secondary reflector with 3 light levels
- Vertical (–7/+90°) and horizontal (300°) swivel reflector
- Simple operating concept
- Illuminated dot matrix display
- Motorised zoom for 24–105 mm illumination
- Integrated wide-angle diffuser for 12 mm illumination
- Flip-out reflector card
- Modelling light (permanent light for checking shadows)
- Integrated autofocus multi-zone flash metering
- Flash readiness indicator and correct exposure display on unit and on camera (depending on camera)
- Flash range display
- Automatic unit shut-off and manual key lock
- Metal base*** with quick lock

Standard flash modes

- TTL flash mode
- Automatic flash mode with 12 automatic apertures
- Manual flash mode with 25 partial lighting levels
- Strobe flash mode
- Servo flash mode
- HSS – high speed synchronisation
- 1st and 2nd shutter curtain synchronisation
- Manual flash exposure correction for TTL or automatic flash mode
- Automatic fill-in flash
- Flash bracketing

Ready for the future

- Firmware update via integrated USB socket

Power supply

- 4 × AA alkaline-magnesium or lithium batteries
- 4 × AA NiMH rechargeable batteries
- High performance Metz
- NiMH power pack P76 with V58-50 cable

Included as standard

- Belt pouch
- Slave stand

Camera-specific system flash modes

Canon version

- E-TTL / E-TTL II flash mode
- E-TTL remote mode**

Nikon version

- i-TTL / D-TTL / 3D flash mode
- i-TTL remote mode**

Olympus/Panasonic/Leica version

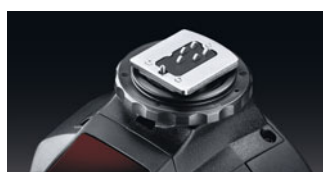
- Micro four thirds / four thirds TTL flash mode
- Micro four thirds TTL remote mode (only Olympus, slave mode)

Pentax version

- P-TTL flash mode
- P-TTL remote mode**

Sony version

- ADI flash mode
- ADI remote mode**



Detail metal base***



Flip-out reflector card



USB interface



Swivel reflector



Simple operation



Secondary reflector

** Master and slave mode

*** Excludes Sony version

mecablitz 52 AF-1 digital



**Perfect
mood lighting.**

High-tech innovative operation.

Genuine enlightenment for all modern cameras. Thanks to its maximum guide number 52 for ISO 100, the Metz mecablitz 52 AF-1 has more than enough power to cope with any shot – the horizontally swivelling and vertically tilting reflector ensures optimal lighting control. Any subject can be professionally set off to best advantage with the help of the integrated diffuser for wide angle shots, and the white reflector card. The fully automatic motorised zoom can adjust lighting angles to precisely suit the focal length of the lens. And even wireless flash – whether in TTL or servo mode – is mastered to perfection by the Metz mecablitz 52 AF-1. Even in low light, the powerful autofocus metering flash can achieve razor-sharp images – and the modelling light makes it possible to evaluate light and shade on the subject prior to shooting. What's more, it holds its own in terms of ease of operation too. The Metz mecablitz 52 AF-1 is the first compact flash unit in the world to be equipped with an illuminated touchscreen display which can be swivelled through 90° – particularly practical for portrait shots. A free software update is available via the USB interface at any time. The innovative compact flash is available in 5 versions for Canon, Nikon, Sony, Olympus/Panasonic and Pentax.

CANON

NIKON

OLYMPUS

PANASONIC

PENTAX

SONY

Flash output

- High max. guide number 52 (meters), High max. guide number 170 (feet) for ISO 100/21° and 105 mm

Basic configuration

- Vertical (+90°) and horizontal (300°) swivel reflector
- Illuminated touchscreen display with automatic swivel function (90°)
- Simple operating concept
- Motorised zoom for 24–105 mm illumination
- Spot zoom mode
- Integrated wide-angle diffuser for 12 mm illumination
- Flip-out reflector card
- Modelling light (permanent light to check shadow)
- Integrated autofocus flash metering
- Flash readiness indicator and correct exposure display on unit and on camera (subject to camera)
- LCD flash range display
- Automatic unit shut-off
- Metal base* with quick lock

Standard flash modes

- TTL flash mode (digital only)
- Manual flash mode with 22 partial lighting levels
- Servo flash mode with learning function
- HSS – high speed synchronisation
- 1st and 2nd shutter curtain synchronisation
- Manual flash exposure correction for TTL flash mode
- Automatic fill-in flash

Ready for the future

- Firmware update via integrated USB socket

Power supply

- 4 × AA alkaline-magnesium or lithium batteries
- 4 × AA NiMH rechargeable batteries

Included as standard

- Belt pouch
- Slave stand

Camera-specific system flash modes

Canon version

- E-TTL / E-TTL II flash mode
- E-TTL remote mode**

Nikon version

- i-TTL / D-TTL / 3D flash mode
- i-TTL remote mode**

Olympus/Panasonic/Leica version

- Micro four thirds TTL flash mode
- Micro four thirds / four thirds TTL remote mode (only Olympus, slave mode)

Pentax version

- P-TTL flash mode
- P-TTL remote mode

Sony version

- ADI flash mode
- ADI remote mode

* Excludes Sony model

** Master and slave mode



Detail metal base*



Flip-out reflector card



Swivel reflector



USB interface



Illuminated touch display with swivel function

mecablitz 44 AF-1 digital



Getting creative in flash mode.

Basic model with great potential.

The mecablitz 44 AF-1 digital is the ideal solution for price-conscious amateur photographers and is available in five versions for Canon, Nikon, Olympus/Panasonic, Pentax and Sony. The clear control panel on the back of the unit impresses with its simple operation; offering a high level of functional reliability. The high performance design affords reserve power in any photo situation (max. guide number 44 for ISO 100/21° and 105 mm). Depending on the camera, it has the appropriate application possibilities for any lighting conditions in TTL mode. The photographer can manually set up to 4 partial light levels, enabling manipulation of lighting effects. With the appropriate camera model the mecablitz can also be synchronised to the first or second shutter curtain, enabling variable options for creative lighting. Depending on the camera, the Metz 44 AF-1 also offers a slave mode, making wireless TTL flash child's play – and opening up new dimensions in flash photography. Its motorised zoom function (24–105 mm), the fully swivelling reflector with flip-out reflector card and the integrated wide-angle diffuser (12 mm) afford the photographer additional creative scope.



CANON

NIKON

OLYMPUS

PANASONIC

PENTAX

SONY

Flash output

- High max. guide number 44 (meters), High max. guide number 144 (feet) for ISO 100/21° and 105 mm

Basic configuration

- Vertical (+90°) and horizontal (300°) swivel reflector
- Simple operating concept
- Motorised zoom for 24–105 mm illumination
- Integrated wide-angle diffuser for 12 mm illumination
- Flip-out reflector card
- Modelling light (permanent light to check shadow)**
- Integrated autofocus flash metering
- Flash readiness indicator and correct exposure display on unit and on camera**
- Automatic unit shut-off

Standard flash modes

- TTL flash mode (digital only)
- Manual flash mode with 4 partial lighting levels
- 1st and 2nd shutter curtain synchronisation**
- Manual flash exposure correction for TTL flash mode**
- Automatic fill-in flash

Ready for the future

- Firmware update via integrated USB socket

Power supply

- 4 × AA alkaline-magnesium or lithium batteries
- 4 × AA NiMH rechargeable batteries

Camera-specific system flash modes

Canon version

- E-TTL / E-TTL II flash mode
- E-TTL remote mode*

Nikon version

- i-TTL / i-TTL BL
- i-TTL remote mode*

Olympus/Panasonic/Leica version

- Micro four thirds TTL flash mode
- Micro four thirds TTL remote mode (only Olympus)*

Pentax version

- P-TTL flash mode
- P-TTL remote mode*

Sony version

- ADI flash mode / pre-flash TTL
- ADI remote mode*

* Slave mode

** Subject to camera



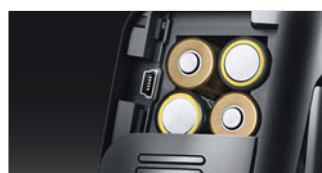
Flip-out reflector card



Simple operation



Swivel reflector



USB interface



mecablitz 36 AF-5 digital

CANON

NIKON

OLYMPUS

PANASONIC

PENTAX

SONY



The compact category

Presenting the practical cobra design Metz mecablitz 36 AF-5 digital in five versions, compatible with respective system flash operating modes. With a guide number of 36 for ISO 100/21° and 85 mm, the entry-level model delivers superior light output in any shooting scenario. What's more, its accessible ease of operation makes it a real winner. Even bouncing flash is child's play thanks to the vertically tilting reflector. And the manually-configurable zoom reflector yields even more benefits. By adjusting the reflector to different focal lengths, the illumination angle of the 36 AF-5 digital can be optimally exploited for each scenario.



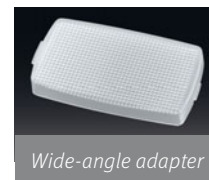
AF beam



Swivel reflector



Zoom reflector



Wide-angle adapter

* Subject to camera

Flash output

- Max. guide number 36 (meters), Max. guide number 118 (feet) for ISO 100/21° and 85 mm

Basic configuration

- Vertical swivel reflector +90°
- LED displays
- Manual zoom reflector for 28–85 mm illumination
- Integrated autofocus flash metering
- Flash readiness indicator and correct exposure display on unit and on camera*
- 18 mm diffuser included as standard
- Automatic unit shut-off

Standard flash modes

- TTL flash mode (digital only)
- 1st and 2nd shutter curtain synchronisation*
- Manual flash exposure correction for TTL flash mode*
- Automatic fill-in flash

Ready for the future

- Firmware update via Metz Service

Power supply

- 4 × AA alkaline-magnesium batteries
- 4 × AA NiMH rechargeable batteries

Camera-specific system flash modes

Canon version

- E-TTL flash mode

Nikon version

- i-TTL flash mode

Olympus/Panasonic/Leica version

- Micro four thirds / four thirds TTL flash mode

Pentax version

- P-TTL flash mode

Sony version

- ADI flash mode

mecablitz 24 AF-1 digital

CANON

NIKON

OLYMPUS

PANASONIC

PENTAX

SONY

The travelling companion

The ideal solution when you're out and about, the mecablitz 24 AF-1 digital is available in five versions for Canon, Nikon, Olympus/Panasonic, Pentax and Sony. Thanks to the compact, slim-line and lightweight design it can be stashed easily in a jacket pocket and is at hand just when you need it. Currently the smallest Metz system flash unit with GN 24 for ISO 100/21° and 35mm focal length, it is particularly suited to flash novices who are looking for better illumination in their photos than is possible with an integrated camera flash. Thanks to intelligent TTL camera control the mecablitz 24 AF-1 digital even makes automatic fill-in flash possible. Additional illumination levels can be achieved thanks to the 90° adjustable swivel reflector. Flash readiness and exposure levels are displayed on the back of the unit via two LED indicators.



AF beam



Swivel reflector

* Subject to camera

Flash output

- Max. guide number 24 (meters),
Max. guide number 80 (feet)
for ISO 100/21° and 35 mm

Basic configuration

- Vertical swivel reflector +90°
- LED displays
- Integrated autofocus flash metering
- Flash readiness indicator and correct exposure display on unit and on camera*

Standard flash modes

- TTL flash mode (digital only)
- 1st and 2nd shutter curtain synchronisation*
- Manual flash exposure correction for TTL flash mode*
- Automatic fill-in flash

Ready for the future

- Firmware update via Metz Service

Power supply

- 2 × AA alkaline-magnesium batteries
- 2 × AA NiMH rechargeable batteries

Camera-specific system flash modes

Canon version

- E-TTL flash mode

Nikon version

- i-TTL flash mode

Olympus/Panasonic/Leica version

- Micro four thirds / four thirds TTL flash mode

Pentax version

- P-TTL flash mode

Sony version

- ADI flash mode

mecablitz 76 MZ-5 digital



Because every second counts.

Professional technology with secondary reflector.

Professional photographers all over the world trust the powerful 76 MZ-5 digital from Metz. Most notably at weddings and fashion shoots, its expertise in rapid succession shots comes to the fore. Its secondary reflector is worth its weight in gold, creating perfect highlights around the eyes. It goes without saying that the camera-specific system flash modes of other manufacturers can also be used to optimal effect with this professional flash. All settings on the logically structured menu can be accessed directly on the units – and an extended key function for all buttons limits the risk of unintentionally overwriting fixed values. The 76 MZ-5 digital is, of course, right up to date and affords exceptional flash convenience with vast creative latitude. Included as standard, the NiMH rechargeable battery and Metz charging unit deliver lasting flash power for exacting requirements. The control unit of the 76 MZ-5 digital has been specially equipped with a large illuminated dot matrix display. Over and above this, is the fact that the reflector on the zoom flash automatically adapts the zoom ratio from 24–105 mm depending on camera type. And the wide angle diffuser included as standard makes it possible to extend this by a further 20 mm.

CANON

NIKON

HASSELBLAD

LEICA

MAMIYA

OLYMPUS

PANASONIC

PENTAX

SONY

Flash output

- High max. guide number 76 (meters), High max. guide number 250 (feet) for ISO 100/21° and 105 mm

Basic configuration

- SCA adapter system (flash unit universally suitable for use with different cameras)
- Secondary reflector with 3 light levels
- Vertical (+90°) and horizontal (270°) swivel reflector
- Motorised zoom for 24–105 mm illumination
- Control unit with illuminated dot matrix display
- Simple operating concept
- Wide-angle diffuser for 20 mm illumination included
- Modelling light (permanent light to check shadow)
- Integrated autofocus flash metering in control unit
- Flash readiness indicator and correct exposure display on unit and on camera (subject to camera)
- Flash range display in LCD
- Manual key lock

Standard flash modes

- TTL flash mode
- Automatic flash mode with 12 automatic apertures
- Manual flash mode with 25 partial lighting levels
- Strobe flash mode
- 1st and 2nd shutter curtain synchronisation
- Manual flash exposure correction for TTL or automatic flash mode
- Automatic fill-in flash
- Flash bracketing

Ready for the future

- Firmware update via Metz Service

Power supply

- Metz NiMH rechargeable battery 76-56 (included as standard)
- High performance Metz NiMH power pack P76 with V 76 cable

Included as standard

- Basic stand
- Camera rail
- NiMH rechargeable battery
- Charging unit
- Wide-angle diffuser (20 mm)

Camera-specific system flash modes

With adapter SCA 3102 for Canon

- E-TTL / E-TTL II flash mode

With adapter SCA 3402 for Nikon

- i-TTL / i-TTL-BL flash mode

With adapter SCA 3202 for

- Olympus/Panasonic/Leica

- Micro four thirds / four thirds TTL flash mode

With adapter SCA 3702 for Pentax

- P-TTL flash mode

With adapter SCA 3302 for Sony

- ADI flash mode
- ADI remote mode*

With adapter SCA 3502 for Leica

- TTL flash mode

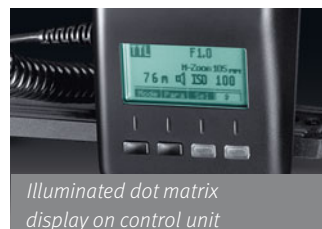
* Slave mode



Swivel reflector



Secondary reflector with 3 selectable light levels



Illuminated dot matrix display on control unit



Control unit with LC display and integrated AF flash metering



SCA 3002 adapter (optional)

mecablitz 15 MS-1 digital



Big on detail.

Macro flash with individual reflectors.

The Metz mecablitz 15 MS-1 digital provides wireless macro flash via two individually-controlled reflectors. In doing so, the innovative macro flash ring guarantees balanced, precision illumination whilst opening up new creative possibilities for macro shots. With the help of individually variable reflectors (0° – 20°) and their precision light distribution, individual creativity really does have full rein. Creating effective light accents has never been so easy, regardless of the subject. And all this with superior convenience of use – after all, the Metz mecablitz 15 MS-1 digital automatically provides the right level of light both reliably and with precision – all thanks to wireless TTL* operation. Over and above this is a clear dot matrix display which serves to make operation of the mecablitz 15 MS-1 digital even easier. Anyone looking for even more creative latitude can fall back on the manual controls on the new mecablitz 15 MS-1 and vary the prescribed light output via the six partial light output settings. Space-saving internal (rechargeable) batteries provide efficient power supply.



CANON

NIKON

OLYMPUS

PANASONIC

PENTAX

SONY

Flash output

- Max. guide number 15 (meters), Max. guide number 50 (feet) for ISO 100/21° and 50 mm

Basic configuration

- Dual reflector system, can be individually swivelled (0°, 10°, 20°) and controlled separately
- Ratio (light distribution from left to right) 8:1, 4:1, 2:1, 1:1, 1:2, 1:4, 1:8
- Dot matrix display
- 2nd shutter curtain synchronisation (subject to camera)
- Slow synchronisation (Slow)
- Autofocus auxiliary light

Standard flash modes

- Wireless servo flash mode with/without pre-flash suppression
- Servo mode with learning function
- Manual flash mode (operation via sync socket/servo)

Ready for the future

- Firmware update via integrated USB socket

Power supply

- Integrated power supply via 2 × AAA
- (Micro) alkaline magnesium batteries (1.5V)
- 2 × AAA (Micro) NiMH/NC rechargeable batteries (1.2V)
- 2 × AAA (Micro) lithium batteries (1.5V)

Included as standard

- Bounce diffuser
- Adapter ring 52 mm, 55 mm, 58 mm (optionally available: 62 mm, 67 mm, 72 mm)
- IR filter bracket
- Belt pouch

Camera-specific system flash modes

- Wireless TTL flash control, remote slave mode selectable for:

Canon

- E-TTL / E-TTL II flash mode

Nikon

- i-TTL flash mode

Olympus

- RC system

Pentax

- P-TTL flash mode

Sony

- DSLR remote flash mode

* A master flash unit is required to make use of TTL mode in remote mode. Subject to manufacturer and camera model, the integrated flash or an external flash unit is equipped with this TTL-specific master function, for example the Metz 58 AF-2 or the Metz 52 AF-1. Find out more at www.metz.de.



Dot matrix display



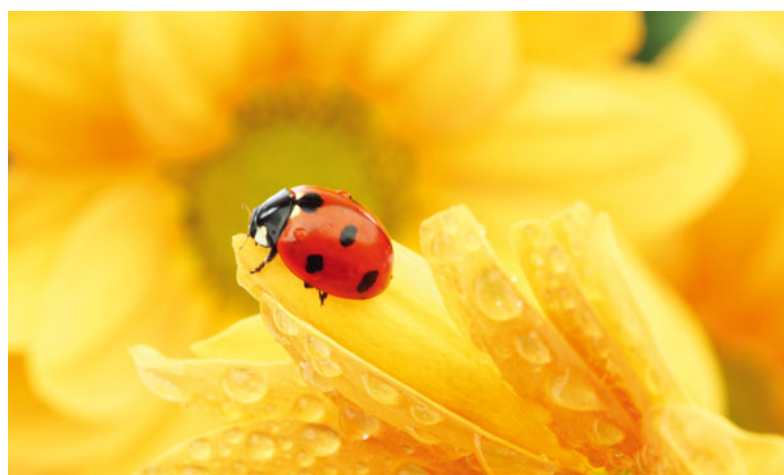
Wireless TTL flash



3-stage swivel reflector



Bounce diffuser included as standard to soften light.



mecablitz 28 CS-2 digital



Smart team player.



Convenient flash unit with built-in fun.

How many times have you been frustrated with dark photos because the integrated flash on your camera simply hasn't been sufficient? Do you wish, time and again, for a convenient flash unit which can also be used separately from the camera? Look no further – Metz has the perfect solution for you! Introducing the Metz mecablitz 28 CS-2 digital which is perfectly suited to compact digital cameras both in terms of technology and proportions. The fun factor is introduced by the self-learning servo mode and the smart EASY mode. The flash result can be directly manipulated via the immediate correct keys (+/-). Simply shoot, check the result on the camera screen and adjust straight away as required – all at the touch of a button. Thanks to this servo model you can increase your flash power without any undesired side effects. The compact tool draws its power from either universally available alkaline micro batteries or equally competitive rechargeable micro batteries.



SUITABLE FOR ALL CAMERAS WITH INTEGRATED FLASH

Flash output

- Max. guide number 28 (meters), Max. guide number 92 (feet) for ISO 100/21° and 85 mm

Basic configuration

- Servo flash mode: Flash unit triggered via built-in camera flash or additional external flash unit
- LCD display
- Flash readiness indicator and correct exposure display on device
- LCD flash range display
- 24 mm illumination (wide-angle diffuser) up to 85 mm (telephoto attachment)
- Automatic unit shut-off

Standard flash modes

- Automatic flash mode with 8 automatic apertures
- Manual flash mode with 4 partial lighting levels
- Easy mode: Manual flash exposure correction with +/- keys

Ready for the future

- Firmware update via Metz Service

Power supply

- 2 × AA alkaline-magnesium batteries
- 2 × AA NiMH rechargeable batteries

Included as standard

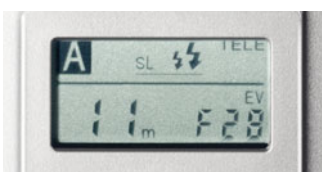
- Wide-angle diffuser 24mm
- Accessory telephoto lens 85mm
- Extendible integrated telescopic rail for attachment to camera tripod socket and stand

Special feature

- Learning mode: Superior one-off configuration of flash unit to camera-specific pre-flashes
- Metz-specific standard TTL remote mode (slave mode) with other Metz flash units as master



Simple control via +/- keys



Clearly laid out display



Perfect assembly with the extendible telescopic rail.



mecablitz 36 C-2

SUITABLE FOR ALL CAMERAS WITH FLASH SHOE CONTACT



Reliable

Anyone looking for a precise automatic flash unit with swivelling reflector can rely on the mecablitz 36 C-2. It is equipped with three different automatic apertures (8, 4, 2 for ISO 100/21°), as well as a manually adjustable zoom reflector which optimises light output within a focal length range of 28–85 mm. LED displays on the back of the device provide information about flash readiness and correct exposure.



Flash output

- Max. guide number 36 (meters),
Max. guide number 118 (feet)
for ISO 100/21° and 85 mm

Basic configuration

- Camera connection via central contact (x-synchronisation) or via sync cable (included as standard)
- Vertical swivel reflector +90°
- LED displays
- Manual zoom reflector for 28–85 mm illumination
- Flash readiness indicator and correct exposure display on device

Standard flash modes

- Automatic flash mode with 3 automatic apertures
- Manual flash mode

Power supply

- 4 × AA alkaline-magnesium batteries
- 4 × AA NiMH rechargeable batteries

Included as standard

- Standard sync cable

mecablitz 20 C-2

SUITABLE FOR ALL CAMERAS WITH FLASH SHOE CONTACT

Small – but packs a punch

An ideal complementary device for anyone with a love of the compact but who doesn't want to risk inferior flash shots. Currently the smallest compact flash unit from Metz and considerably more effective than a built-in camera flash. The mecablitz 20 C-2 with guide number 20 for ISO 100/21° and 35 mm focal length is perfect for anyone who prefers to have a flash that can even fit into a jacket pocket. The smart little thing has two automatic apertures. And the real highlight – the swivel reflector! LED indicators on the back of the unit not only provide information on flash readiness, but also on correct exposure.



Practical swivel reflector

Flash output

- Max. guide number 20 (meters), Max. guide number 66 (feet) for ISO 100/21° and 35 mm

Basic configuration

- Camera connection via central contact (x-synchronisation) or via sync cable (included as standard)
- Vertical swivel reflector +90°
- LED displays
- Flash readiness indicator and correct exposure display on device

Standard flash modes

- Automatic flash mode with 2 automatic apertures
- Manual flash mode

Power supply

- 2 × AA alkaline-magnesium batteries
- 2 × AA NiMH rechargeable batteries

Included as standard

- Standard sync cable

Our range of accessories

Creative lighting

mecabounce diffuser attachments

Perfect for portrait photography: the white mecabounce diffusers produce a particularly soft and natural light – also with wide-angle illumination. They can be quickly and easily attached to the flash reflector head.

- For corresponding compact flash units*

mecabounce diffuser MBM-01

mecabounce diffuser MBM-02

mecabounce diffuser MBC-10

mecabounce diffuser MBC-11

- For corresponding Metz handheld flash guns*

mecabounce diffuser 60-90

mecabounce diffuser 50-90

mecabounce diffuser 45-90

Easy soft boxes with accessories

Perfect for smaller product and portrait photography: the 360-degree rotatable Easy soft boxes ensure soft and balanced mood lighting. They can be folded, assembled and disassembled in a flash.

Easy soft box ESB 60-60

- Dimensions: 60 × 60cm
- Includes front and rear diffuser and carry bag

Easy soft box ESB 40-40

- Dimensions: 40 × 40cm
- Includes front and rear diffuser and carry bag

Flash unit holder FGH 40-60

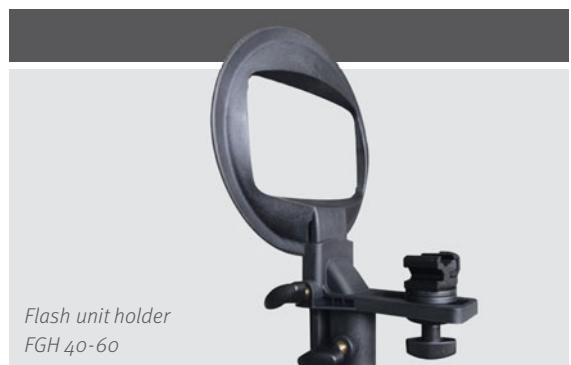
- Adapter between compact flash units and Easy soft boxes
- Adjustable flash shoe height
- Can be attached to Metz LS-247 and LS-200 lighting tripods

Lighting tripod LS-247

- Maximum height 247cm/weight 3.0kg
- With air cushioning

Lighting tripod LS-200

- Maximum height 200cm/weight 2.5kg
- With air cushioning



Whether it's product photos or portrait shots: with the folding Mini and Mini Octagon soft boxes you can swathe your subject in soft and harmonious lighting. Thanks to a Velcro strap it can be easily attached to any compact flash unit and transported in its accompanying bag.

Mini soft boxes

Perfect for smaller product shots

Mini soft box SB 30-20 (colour: white, dimensions: 30 × 20 cm)

Mini soft box SB 22-16 (colour: white, dimensions: 22 × 16 cm)

Mini soft box SB 18-15 (colour: white, dimensions: 18 × 15 cm)

Mini Octagon soft boxes

Perfect for passport and portrait photographs

Mini Octagon soft box SB 34-34 (colour: white, dimensions: Ø 34 cm)

Mini Octagon soft box SB 20-20 (colour: white, dimensions: Ø 20 cm)

Mini Octagon soft box SB 15-15 (colour: white, dimensions: Ø 15 cm)

Whether you are looking for a precise spotlight or weak, indirect illumination, we have the perfect reflector umbrella for any compact flash unit – to suit every photographic requirement. What's more, the Velcro strap means it can be quickly and easily attached to the flash unit head.

Spot reflector umbrellas

Spot reflector umbrella SD 30-26 W

- Colour: white for neutral light / dimensions: 30 × 26cm

Spot reflector umbrella SD 30-26 W

- Colour: silver for cool light / dimensions: 30 × 26cm

Spot reflector umbrella SD 30-26 G

- Colour: silver for warm light / dimensions: 30 × 26cm

Reflector umbrellas

Perfect for portrait shots and close-ups. Light loss approx. 3 f-stops.

Reflector umbrella 76-23 (for all Metz handheld flash guns)*

Reflector umbrella 58-23 (for numerous Metz, Canon and Nikon flash units)*

* For an overview of compatible units go to page 30.



Mini soft box
SB 30-30



Mini Octagon
soft box SB 34-34



Spot reflector umbrella
SD 30-26 G



Reflector umbrella
76-23

Our range of accessories

Adapters and accessories

SCA adapters and accessories

The unique special feature of Metz SCA flash units is that one and the same flash unit can be used with different cameras. Simply by switching the adapter it is possible to use the system cameras of various manufacturers.*

SCA 3102 for Canon system cameras (Canon E-TTL / E-TTL II)

SCA 3402 for Nikon system cameras (Nikon i-TTL / D-TTL)

SCA 3202 for Olympus/Panasonic system cameras (Olympus/Panasonic TTL)

SCA 3702 for Pentax system cameras (Pentax P-TTL)

SCA 3302 for Sony system cameras (Sony ADI TTL)

SCA 3502 for Leica cameras R/M (Leica TTL)

SCA 3045 digital connection cable between SCA 3002 adapter and 45 CL 4 digital

SCA 3083 digital slave adapter for wireless standard TTL with flash units 40 MZ-., 54 MZ and 70 MZ-4, as well as with standard servo functions

SCA 3000 C connection cable between adapter SCA 3000/3002 with 60 CT-4, 45 CL/T-4, -3 or power bracket G 15

SCA 300 A connection cable between adapter SCA 300, handheld flash guns or power bracket

SCA 301 basic stand, compatible with all SCA flash units; incl. sync cable socket

SCA 307 A connection cable between adapter SCA 300 on the camera's flash shoe and the Metz flash unit on the camera rail

TTL connection cable

The 1.8 metre long TTL connection cable for compact flash units enables complete TTL exposure control. Equipped with tripod socket and suitable for connection to a flash unit on a 40-36 Metz camera rail.

TTL connection cable, available for:

Canon, Nikon, Olympus/Panasonic and Sony cameras and compatible flash units**

Flash shoe adapter

Flash shoe adapter with sync cable socket to control compatible external flash units or studio flash units.***

Flash shoe adapter for Canon TSC-11

- Flash shoe adapter with sync cable socket

Flash shoe adapter for Nikon TSC-20

- Flash shoe adapter with accessory flash shoe and sync cable socket

Flash shoe for Sony TSC-50

- Flash shoe adapter with accessory flash shoe and sync cable socket



SCA 3102 adapter



SCA 3045 digital



SCA 3083 digital



TTL connection cable for Canon TCC-10



Flash shoe adapter for Canon TSC-11



Flash shoe adapter for Nikon TSC-20

Our range of accessories

Synchronisation and attachment

Sync cable

Sync cable for all Metz flash units with sync sockets, basic stand SCA 301 or for flash shoe adapter.

Spiral sync cable

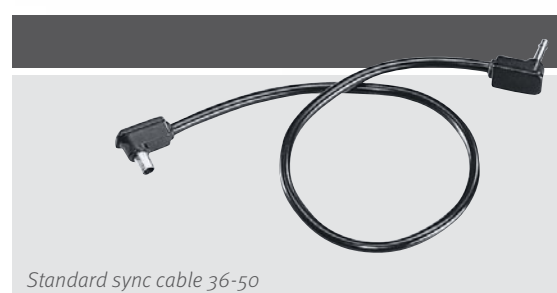
- Length 20 – 60 cm
- For corresponding compact flash units and Metz handheld flash guns**

Standard sync cable

- Length 25 cm (cable 15-50, 36-50)
- Length 40 cm (cable 45-47)
- Length 100 cm (cable 45-48)
- For corresponding compact flash units and Metz handheld flash guns**



Spiral sync cable 36-52



Standard sync cable 36-50

Camera rails and accessories**

Camera rail 40-36

- For all compact flash units
- For connection to flash units beside the camera
- Perfect for large cameras

Camera rail 32-38

- For all compact flash units and Power brackets
- Replacement for attached camera rails on handheld guns

Rail adapter 60-28

- For 45 CL 4 digital, 45 CL/CT 4, 3, 1, 45 CT 5 and 60 CT 1
- For fixing the height offset between camera subject and the handheld flash gun's reflector, height-adjustable

angle bracket 50-35

- For 76 MZ-5, 50 MZ-5, 70 MZ-5, 4
- For the attachment of the control unit when using cameras without flash shoe (e.g. medium and large format cameras)

Rail plates 70-35

- For all handheld guns and Power brackets
- For the attachment of medium and large format cameras on flash rail 32-38; incl. large steel tripod screw

* Adapter SCA 3902 for Hasselblad and SCA 3952 for Mamiya are available from the camera manufacturer.

** For an overview of compatible units go to page 30 and 31.

*** Simultaneous use of TTL and sync cable is only possible with Nikon and Sony cameras. For this reason the version for Canon only comes equipped with a sync socket.



Camera rail 40-36



Rail adapter 60-28



Angle bracket 50-35

Our range of accessories

Energy

Power pack and accessories

NiMH power pack P 76 set*

Metz NiMH high-performance power pack P 76 with international charging unit for significantly higher flash numbers and reduced flash delay**.

- For Metz flash units with power pack socket
- Charge and discharge function
- Readiness display
- Overheating protection
- Charging status display 20, 40, 60, 80, 100 %

Connection cable

- V 76 for power pack P 76 set with 76 MZ-5 or 45 CL 4 digital
- V 58-50 for power pack P 76 set with 58 AF-2
- V 54-50 for power pack P 76 set with 54 MZ-4i, -4, -3

Rechargeable batteries and charger sets

NiMh charger set B47

- For Metz flash units 76 MZ-5, 70 MZ-5, -4
- Set of NiMH rechargeable battery 76-56 and international charging unit 970
- With adapters for EU, USA, UK, AUS

NiMh charger set B46

- For Metz flash units 45 CL/CT 1, 3, 4, 5 + 45 CL-4 digital
- Set of NiMH rechargeable batteries 45-56 and international charging unit 970
- With adapters for EU, USA, UK, AUS

NiMH rechargeable battery 76-56

- For Metz flash units 76 MZ 5, 70 MZ-5,-4 + 50 MZ-5 (charging unit required)
- Flash delay: 0.1 to 4.0 seconds / flash numbers: 180 to 7,200

NiMH rechargeable battery 45-56

- For Metz flash units 45 CL/CT 1, 3, 4, 5 + 45 CL-4 digital (charging unit required)
- Flash delay: 0.3 to 8.0 seconds / flash numbers: 50 to 8,800

Battery basket 45-39

- For Metz flash units 45 CL/CT 1, 3, 4, 5 + 45 CL-4 digital, without batteries
- Flash delay: 0.3 to 15.0 seconds / flash numbers: 50 to 2,000

Dry rechargeable battery 60-38

- For Metz flash units 60 CT-4, 60 CT-2 and 60 CT-1
- Flash delay: 0.3 to 5.0 seconds / flash numbers: 160 to 4,500



NiMH power pack P 76 set



NiMH rechargeable battery with charging unit B 47



NiMH rechargeable batteries with charging unit B 46



Battery basket 45-39

Our range of accessories

Miscellaneous

mecalux 11

Servo flash trigger for wireless remote initiation of additional flash units*. Batteries are not required. Special feature: flexible operation of several flash units without long sync connection. Connections: sync socket and rotating flash shoe. Attachment via flash shoe or tripod.



mecalux 11

Adapter rings for 15 MS-1 digital

For attachment of Metz macro flash unit 15 MS-1 to 62, 67 and 72 mm macro lenses.

Adapter ring 15-62 (diameter: 62mm)

Adapter ring 15-67 (diameter: 67mm)

Adapter ring 15-72 (diameter: 72mm)



Adapter ring 15-62

Bags and carrying straps

Flash bag T 58

- Flash unit bags for corresponding compact flash units*

Carrying straps 50-31

- For all Metz handheld flash guns and power packs



Flash bag T 58



Carrying straps 50-31

* For an overview of compatible units go to page 30 and 31.

** For an overview of compatible units go to page 33.

Overview of accessories

Current Metz flash units									
58 AF-2 DIGITAL									
52 AF-1 DIGITAL									
44 AF-1 DIGITAL									
36 AF-5 DIGITAL									
24 AF-1 DIGITAL									
76 MZ-5 DIGITAL									
15 MS-1 DIGITAL									
28 CS-2 DIGITAL									
36 C-2									
20 C-2									

Other Metz flash units				
60 CT-4				
58 AF-1 DIGITAL				
54 MZ-4i DIGITAL				
50 AF-1 / 48 AF-1 DIGITAL				
45 CL-4 DIGITAL				

FLASH UNITS FROM OTHER MANUFACTURERS*

MECABOUNCE DIFFUSER ATTACHMENTS

mecabounce diffuser MBM-01 / Metz 58 AF-.. / 50 AF-1	•									
mecabounce diffuser MBM-02 / Metz 52 AF-1, 44 AF-1		•	•							
mecabounce diffuser MBM-10 / Canon 580 EX / EX II										•
mecabounce diffuser MBM-11 / Canon 430 EX / EX II										•
mecabounce diffuser 60-90 / Metz 60 CT-..	•									
mecabounce diffuser 50-90 / Metz 76 MZ-5						•				
mecabounce diffuser 45-90									•	

		•			•					
										•
										•
	•									
									•	

EASY SOFT BOXES WITH ACCESSORIES

Easy soft box ESB 60-60	•	•	•	•	•				•	•
Easy soft box ESB 40-40	•	•	•	•	•				•	•
Flash unit holder FGH 40-60 (for lighting tripods)	•	•	•	•	•				•	•

		•	•	•						•
		•	•	•						•
		•	•	•						•

MINI SOFT BOXES

Mini soft box SB 30-20	•	•	•	•	•	•			•	•
Mini soft box SB 22-16	•	•	•	•	•	•			•	•
Mini soft box SB 18-15	•	•	•	•	•	•			•	•

•	•	•	•	•					•	
•	•	•	•	•					•	
•	•	•	•	•					•	

MINI OCTAGON SOFT BOXES

Mini Octagon soft box SB 34-34	•	•	•	•	•	•			•	•
Mini Octagon soft box SB 20-20	•	•	•	•	•	•			•	•
Mini Octagon soft box SB 15-15	•	•	•	•	•	•			•	•

•	•	•	•	•					•	
•	•	•	•	•					•	
•	•	•	•	•					•	

SPOT ATTACHMENTS

Spot reflector umbrella SD 30-26 W (white)	•	•	•	•	•	•			•	•
Spot reflector umbrella SD 30-26 S (silver)	•	•	•	•	•	•			•	•
Spot reflector umbrella SD 30-26 G (gold)	•	•	•	•	•	•			•	•

•	•	•	•	•					•	
•	•	•	•	•					•	
•	•	•	•	•					•	

REFLECTOR UMBRELLAS

Reflector umbrella 76-23						•				
Reflector umbrella 58-23	•	•	•							

•						•				
	•	•	•							•

SCA ADAPTERS

SCA 3102 / Canon						•				
SCA 3402 / Nikon						•				
SCA 3202 / Olympus - Panasonic						•				
SCA 3702 / Pentax						•				
SCA 3302 / Sony						•				
SCA 3502 / Leica						•				
SCA 3902 / Hasselblad**						•				
SCA 3952 / Mamiya**						•				

•		•		•						
		•		•						
•		•		•						
•		•		•						
•		•		•						
•		•		•						
•		•		•						
•		•		•						

SCA ACCESSORIES

SCA 3045 digital / connection cable						•				
SCA 3083 digital / slave adapter						•				
SCA 3000 C / connection cable										
SCA 300 A / connection cable										
SCA 301 / basic stand						•				
SCA 307 A / connection cable •										

•						•				
•		•		•						
•										
•										
•		•		•						
•		•		•						
•		•		•						
•		•		•						

Current Metz flash units									
58 AF-2 DIGITAL									
52 AF-1 DIGITAL									
44 AF-1 DIGITAL									
36 AF-5 DIGITAL									
24 AF-1 DIGITAL									
76 MZ-5 DIGITAL									
15 MS-1 DIGITAL									
28 CS-2 DIGITAL									
36 C-2									
20 C-2									

Other Metz flash units				
60 CT-4				
58 AF-1 DIGITAL				
54 MZ-4i DIGITAL				
50 AF-1 / 48 AF-1 DIGITAL				
45 CL-4 DIGITAL				

FLASH UNITS FROM OTHER MANUFACTURERS*

TTL CONNECTION CABLES

TTL connection cable for Canon TCC-10	•	•	•	•	•				
TTL connection cable for Nikon TCC-20	•	•	•	•	•				
TTL connection cable for Olympus / Panasonic TCC-30	•	•	•	•	•				
TTL connection cable for Sony TCC-50	•	•	•	•	•				

	•	•	•					•
	•	•	•					•
	•	•	•					•
	•	•	•					•

FLASH SHOE ADAPTERS

Flash shoe adapter for Canon TSC-11									
Flash shoe adapter for Nikon TSC-20	•	•	•	•	•				
Flash shoe adapter for Sony TSC-50	•	•	•	•	•				

	•	•	•						•
	•	•	•						•

SYNC CABLES

Spiral sync cable 36-52					•			•	•
Spiral sync cable 45-49									
Standard sync cable 15-50						•			
Standard sync cable 36-50					•			•	•
Standard sync cable 45-47									
Standard sync cable 45-48									

		•							•
•							•		
							•		•
•							•		
•							•		

CAMERA RAILS AND ACCESSORIES

Camera rail 40-36	•	•	•	•	•			•	•
Camera rail 32-38					•				
Rail adapter 60-28									
Angle bracket 50-35					•				
Rail plate 70-35					•				

	•	•	•						•
•							•		
•							•		
•							•		

POWER PACKS AND ACCESSORIES

NiMH power pack P 76 set	•				•				
Connection cable V 76					•				
Connection cable V 58-50	•								
Connection cable V 54-40									

	•	•			•				
							•		
	•	•							

RECHARGEABLE BATTERIES AND CHARGER SETS

NiMH rechargeable battery with charging unit B 47 •					•				
NiMH rechargeable battery with charging unit B 46 •								•	
NiMH rechargeable battery 76-56 •					•				
NiMH rechargeable battery 45-56 •								•	
Battery basket 45-39 •								•	
Dry rechargeable battery 60-38									

							•		
							•		
							•		
•									

BAGS AND CARRYING STRAPS

Flash unit bag T 58	•	•	•						
Carrying straps 50-31					•				

	•	•	•						•
•					•				

MECALUX

mecalux 11					•				
------------	--	--	--	--	---	--	--	--	--

•		•		•					•
---	--	---	--	---	--	--	--	--	---

* For further information visit www.metz.de

** Adapter is available from the camera manufacturer.

Technology at a glance

System flash units				
58 AF-2 DIGITAL	52 AF-1 DIGITAL	44 AF-1 DIGITAL	36 AF-5 DIGITAL	24 AF-1 DIGITAL

Specialist flash units				
76 MZ-5 DIGITAL	15 MS-1 DIGITAL	28 CS-2 DIGITAL	36 C-2	20 C-2

FLASH OUTPUT (METERS)

Guide number for ISO 100, 35mm and 50mm	42	38	32	30	24
Guide number for ISO 100 and max. zoom	58	52	44	36	24

54	15	22	30	20
76	15	28	36	20

FLASH OUTPUT (FEET)

Guide number for ISO 100, 35mm and 50mm	138	125	105	98	80
Guide number for ISO 100 and max. zoom	190	170	144	118	80

177	50	72	98	66
250	50	92	118	66

BASIC CONFIGURATION

Adapter system SCA 300 / Adapter system SCA 3002					
Illumination from ... mm (35 mm format)	12	12	12	18	35
Motorised zoom main reflector / Manual zoom main reflector	•/-	•/-	•/-	-/•	
Extended zoom mode for main reflector	•	•			
Main reflector swivelling / rotating	•/•	•/•	•/•	•/-	•/-
Vertical tilt range in °	-7/+90	+90	+90	+90	+90
Horizontal swivel range in °	300	300	300		
Integrated wide-angle diffuser for illumination in mm (35 mm format)	12	12	12		
Accessory wide-angle, telephoto lens, and bouncer attachments				•/-/-	
Integrated reflector card for main reflector	•	•	•		
Secondary reflector / partial lighting levels (manually adjustable)	•/2				
Secondary reflector support for system flash functions	•				
Dot matrix display / illuminated	•/•	•/•			
Illuminated touchscreen display with automatic swivel function (90°)		•			
LC display / illuminated					
LED displays			•	•	•
Range display	•	•			
Flash readiness display / correct exposure display on the flash unit	•/•	•/•	•/•	•/•	•/•
Acoustic status notifications (beep)	•				
Modelling light function	•	•	•2)		
Manual key lock (KEYLOCK) / Automatic unit shut-off (Auto-Off) / Wake-up function via the camera	•/•/•	•/•/•	-/•/•	-/•/•	-/•/•
Automatic AF flash metering / multiple zone AF flash metering / AF auxiliary light	•/•/-	•/•/-	•/•/-	•/•/-	•/•/-
Metz remote flash mode (master/slave)					

•/•				
20	50	24	28	35
•/-			-/•	
•				
•/•	-/•		•/-	•/-
+90			+90	+90
270	20			
•/-/-	•/-/-	•/•/-		
•/2				
•				
•/•	•/-			
		•/-		
•		•	•	•
•/•	•/•	•/•	•/•	•/•
•				
•	•			
•/-/-		-/•/-		
•/-/-	-/•/•			
•/•		-/•		

STANDARD FLASH MODES

TTL flash mode (without pre-flash)	•				
Automatic flash mode (f-stops)	•(12)				
EASY mode flash mode					
Manual flash mode (partial light levels)	•(25)	•(22)	•(4)		
Servo flash mode ²⁾ (without pre-flash suppression/with pre-flash suppression/learning function)	•/•/-	•/•/-			
Strobe flash mode	•				

•				
•(12)		•(8)	•(3)	•(2)
		•		
•(25)	•(6)	•(4)	•	•
1)/1)/-	•/•/•	•/•/•		
•				

SYSTEM FLASH FUNCTIONS

Automatic fill-in flash	•	•	•	•	•
Flash readiness display in camera viewfinder	•	•	•	•	•
Correct exposure display in viewfinder ²⁾	•	•	•	•	•
First and second shutter curtain synchronisation ²⁾	•	•	•	•	•
High speed synchronisation (HSS and FP)	•	•			
Manual flash exposure correction	•	•			
Manual flash bracketing	•				
Pre-flash function against "red eye" ²⁾	•	•	•	•	•

•				
•				
•				
•	•			
•				
•				
•				

SYSTEM FLASH MODES⁴⁾

Canon E-TTL / E-TTL-II flash mode	•/•	•/•	•/•	•/-	•/-
Canon FE flash output memory for E-TTL and E-TTL-II flash mode	•	•	•	•	•

•/•				
•				

1) with slave adapter SCA 3083 digital 2) subject to camera 3) micro-cell (AAA) operated: NiMh (1000 mAh) 4) subject to version

System
flash units

58 AF-2 DIGITAL	52 AF-1 DIGITAL	44 AF-1 DIGITAL	36 AF-5 DIGITAL	24 AF-1 DIGITAL
-----------------	-----------------	-----------------	-----------------	-----------------

Specialist
flash units

76 MZ-5 DIGITAL	15 MS-1 DIGITAL	28 CS-2 DIGITAL	36 C-2	20 C-2
-----------------	-----------------	-----------------	--------	--------

SYSTEM FLASH MODES⁴⁾

Canon E-TTL remote flash system as master/controller/slave	•/•/•	•/•/•	-/-/•		
Leica guide number control (GNC)					
Nikon i-TTL / i-TTL-BL flash mode	•/•	•/•	•/•	•/-	•/-
Nikon D-TTL / D-TTL-3D flash mode / Nikon 3D multi-sensor fill-in flash mode	•/•/•				
Nikon FV flash output memory for i-TTL and i-TTL-BL flash mode	•	•	•	•	•
Nikon matrix controlled fill-in flash mode / Nikon under exposure display in EV (f-stop)	•/•	-/•			
Nikon i-TTL remote flash system as master/controller/slave	•/•/•	•/•/•	-/-/•		
Olympus/Panasonic/Leica micro-four-thirds/four thirds system (TTL compatible)	•	•	•	•	•
Olympus four thirds system TTL remote flash system (RC mode)	•	•	•		
Pentax P-TTL flash mode / contrast control / spot beam mode	•/•/•	•/•/•	•/-/-	•/-/-	•/-/-
Pentax P-TTL remote flash system as master/controller/slave	•/•/•	•/•/•	-/-/•		
Sony DSLR-ADI flash control	•	•	•	•	•
Sony DSLR multiple zone flash photometer (TTL pre-flash metering)	•	•	•	•	•
Sony DSLR remote flash system as master/controller/slave (CTRL/CTRL+ operation)	•/•/•	•/•/•	-/-/•		

	-/-/•			
•				
•/•				
•/•/•				
•				
•/•				
	-/-/•			
•				
	•			
•/•/•				
	-/-/•			
•				
•				
	-/-/•			

READY FOR THE FUTURE

Firmware update via Metz Service	•	•	•	•	•
Firmware update via USB socket	•	•	•		

•	•	•		
	•			

POWER SUPPLY

Operation with alkaline-magnesium batteries (1.5 V)	•	•	•	•	•
Operation with NC or NiMH rechargeable batteries (1.2 V)	•	•	•	•	•
Operation with lithium batteries (1.5 V)	•	•	•		
Operation with Metz NiMH rechargeable battery pack					
External energy supply with Metz power pack P 76	•				

	•	•	•	•
	•	•	•	•
	•	•		
•				
•				

FLASH NUMBERS (FOR FULL LIGHT OUTPUT)

Operation with alkaline-magnesium batteries (1.5 V)	180	140	220	450	200
Operation with NiMH rechargeable batteries (1.2 V/2100 mAh)	250	240	270	460	250
Operation with lithium batteries (1.5 V)	370	370	450		
Operation with Metz NiMH rechargeable battery pack (1650 mAh)					
External energy supply with Metz power pack P 76	430				

	140 ³⁾	100 ³⁾	450	150
	200 ³⁾	140 ³⁾	460	190
	250 ³⁾	175 ³⁾		
160				
350				

FLASH DELAY IN SECONDS (MIN./MAX.)

Operation with alkaline-magnesium batteries (1.5 V)	0.1/4.5	0.1/4	0.1/3	0.3/3	0.3/5
Operation with NiMH rechargeable batteries (1.2 V)	0.1/4.5	0.1/3.5	0.1/3	0.3/3	0.3/6
Operation with lithium batteries (1.5 V)	0.1/4.5	0.1/4.5	0.1/4		
Operation with Metz NiMH rechargeable battery pack					
External energy supply with Metz power pack P 76	0.1/2.5				

	0.3/4	0.3/8	0.3/5	0.3/10
	0.3/4	0.3/6	0.3/5	0.3/8
	0.3/5	0.3/6	0.3/5	0.3/8
0.1/4				
0.3/2.5				

DIMENSIONS AND WEIGHT

Weight without power sources in g (approx.)		Flash gun	368	346	306	195	126
		Control unit					
Dimensions in mm approx. (W × H × D)	W	Flash gun	71	73	73	73	64
		Control unit					
	H	Flash gun	145	134	130	113	95
		Control unit					
	D	Flash gun	99	90	106	86	68
		Control unit					

1126	209	117	196	124
138				
103	130	78	73	65
67				
246	144	83	115	93
35				
121	37	32	92	66
89				

DIMENSIONS AND WEIGHT (US)

Weight without power sources in oz (approx.)		Flash gun	12.52	12.10	11.30	7.23	4.94
		Control unit					
Dimensions in inch approx. (W × H × D)	W	Flash gun	2.80	2.87	2.80	2.80	2.56
		Control unit					
	H	Flash gun	5.83	5.28	5.05	4.53	3.86
		Control unit					
	D	Flash gun	3.90	3.54	4.14	3.74	2.13
		Control unit					

31.04	6.70	4.94	7.23	4.23
4.87				
4.06	5.24	2.97	2.87	2.56
2.64				
9.61	5.67	3.27	4.33	3.86
1.38				
4.65	1.50	1.28	3.43	2.13
3.50				

Technical glossary

A

Acoustic status notification (BEEP)

Additional acoustic status notifications can be activated for flash readiness, flash exposure control and alerts.

AF flash metering

An autofocus auxiliary light (AF measurement flash) integrated in the flash unit automatically supports the central autofocus sensor of the camera in low ambient light conditions. A multi-zone AF measurement flash, also supports decentralised AF sensors.

Automatic unit shut-off

During extended breaks from photographing, the flash unit switches automatically to an energy saving standby mode to prevent the power source from discharging (Auto-Off).

The wake-up function (» Wake-Up function) re-activates the flash unit e.g. by lightly depressing the camera shutter.

Automatic flash mode

A photo sensor integrated in the flash unit measures the flash exposure of the subject during photographing, and automatically terminates the light output as soon as the subject is correctly exposed.

C

Correct exposure display

The correct exposure display o.k., appears on the flash unit after photographing if the subject in automatic or TTL flash mode is correctly lit.

D

Dot matrix display with soft keys

Individual adaptation of the display on the camera system and the operating status for optimum and self-explanatory operation of the flash unit via soft keys.

D-TTL

Further development of the TTL flash control with metering pre-flash technology for Nikon cameras.

3D and D-TTL 3D

With the 3D-TTL (Nikon) and D-TTL 3D flash control, additional data such as the distance to the subject is taken into account during flash exposure.

E

E-TTL

Innovative advancement of TTL flash control with pre-flash metering technology for Canon EOS and PowerShot cameras.

E-TTL II

With the E-TTL II flash control, additional data is taken into account during flash exposure, such as the distance to the subject and the guide number of the flash unit.

Extended zoom

With the motorised zoom mode the main reflector illuminates the subject more than necessary by one reflector position. Thereby providing additional scattered light indoors for a softer illumination of the subject.

F

Flash bracketing

Flash bracketing series with three shots of different flash exposure: minus correction value, no correction value, and plus correction value.

Flash readiness display

The flash readiness display lights up when the flash unit's flash capacitor possesses sufficient energy for the shot.

G

Guide number

The guide number is the code number for the light output of a flash unit. It is dependent upon the preset ISO light sensitivity and (with zoom reflectors) on the position of the reflector, as well as on the potential use of reflector attachments (e.g. accessory wide-angle or telephoto lens). With high speed synchronisation (HSS) the guide number also depends on the shutter speed.

H

HSS – high speed synchronisation

In high speed synchronisation (HSS), you can flash with shutter speeds that are shorter than the flash sync time of the camera. As a result, flash photos with wide focal aperture are possible in high ambient light levels, for example in order to limit the depth of field in portrait shots.

I

i-TTL

Innovative advancement of the TTL flash control with metering pre-flash technology for Nikon cameras.

i-TTL-BL

With the i-TTL-BL flash control, additional data such as the distance to the subject is taken into account by the flash lighting.

K

Key function

Locking of operational controls. Protects against unintentional overwriting.

L

LCD display

Provides information about the operating modes and settings being used. (» Dot matrix display)

Learning mode

The flash unit is capable of recognising the camera's pre-flash technology and in turn of circumventing pre-flash technology. The flash is therefore only activated as the main flash when taking photographs (subject to camera).

M

Manual flash mode

Flash mode with unregulated light output. The flash unit delivers the full light output, provided no partial light output is set.

Manual zoom

The zoom position of the main reflector and thus the illumination of the flash unit can be adjusted manually to the focal length of the lens.

Metal stand

High-quality metal base for secure attachment on camera shoe.

Modelling light

The modelling light is a stroboscope light with a high flash frequency lasting a few seconds. This “quasi permanent light”, allows you to evaluate the light distribution and shadow formation on the subject before taking the photograph.

Motor zoom

The zoom position of the main reflector and thus the illumination of the flash unit is automatically adjusted to the focal length of the lens.

P

Partial light mode

Manual flash mode with unregulated light output. By setting partial light mode on the flash unit, the light output or illumination duration of the flash unit can be specifically adapted to the photographic situation.

P-TTL

Innovative advancement of the TTL flash control with metering pre-flash technology for Pentax cameras.

R

REAR

Synchronisation to the 2nd shutter curtain for more natural blur effects for longer exposure times.

Remote mode

A remote system consists of a master or controller flash unit on the camera and one or more

slave flash units. The slave flash unit is wirelessly remotely controlled by the master or controller flash unit. Unlike a controller flash unit, with a master flash unit, the flash contributes to the exposure.

S

SCA-3002 adapter system

For system cameras with digital or analog data transmission between the camera and flash unit. By using an SCA adapter from the SCA 3002 system, there are numerous additional system flash functions available with flash units from the SCA 3002 system, depending on the type of camera. The firmware of an SCA adapter from the SCA 3002 system can be updated via Metz Service for future cameras.

Secondary reflector

To brighten shadows cast at close range which appear when using an indirect flash.

Servo mode

The servo mode allows you to operate the Metz flash unit of the corresponding camera system wirelessly with the built-in flash unit on the digital camera. It allows light output to be manually calibrated as partial lighting.

Slave mode

An integrated sensor makes this wireless slave flash mode possible in combination with a master or controller flash unit. (» Remote mode)

Sony / ADI

Innovative further development of the TTL flash control for Sony Alpha cameras in which, for example, information regarding the distance to the subject is included in the flash exposure.

Spot zoom mode

While zooming the reflector increases by one illumination level on the object over the selected position. This centrally highlights the shot. Example: the zoom reflector adjusts to 70mm for a set focal length of 50mm. The information in the display of the flash unit remains however at 50mm, the original focal length of the lens.

Strobe mode

Manual flash mode for flash sequences with a selectable intensity, frequency, and flash number, e.g. for special effect photos and motion studies.

Swivel reflector

Can be tilted horizontally and vertically for bouncing flash. Can be tilted vertically for a bouncing flash.

T

Touch display

Illuminated graphic display that can be operated by touching the display panel.

TTL fill-in flash control

Reduces too high subject contrast (e.g. to brighten dark shadowy areas in bright sunshine).

TTL mode

While taking the photograph, the flash is measured through the lens (TTL = through the lens) by a sensor in the camera. The light output of the flash unit is terminated as soon as the subject is correctly exposed.

U

USB

Interface for firmware updates via the Internet.

W

Wake-up

The flash unit can be reactivated by lightly depressing the shutter if it has been in energy-saving standby mode after an extended break from taking photographs. (» Automatic unit switch-off)

Wide-angle adapter

Increases the light angle of the flash unit. Depending on the type of flash unit, the wide-angle attachment is available either integrated or attachable as an accessory.



Metz – for everything you need to know about perfect illumination

When it comes to illumination, Metz always has the perfect solution – whether it's for amateur, ambitious or professional photographers. Our innovative products score points through high-performance technology and reliable quality. For further information regarding our current range visit www.metz.de – or organise your own personal consultation with your Metz specialist dealer. Take a look at our latest catalogues and request them free of charge!

mecastudio



mecastudio

Studio photography in the best light: the latest mecastudio catalogue provides you with everything you need to know about flash photography, technical accessories and complete studio flash kits for amateur and professional photographers alike.

mecalight



mecalight

Perfect light for moving images: in the new mecalight catalogue we present compact and high-performance LED video lighting along with additional accessories – for camcorder or still camera with video function.

Metz-Werke GmbH & Co KG

Mailbox 1267

90506 Zirndorf, Germany

Phone: +49 (0) 911 – 97 06 0

Fax: +49 (0) 911 – 97 06 340

www.metz.de

info@metz.de

Your Metz specialist retailer

Availability and technical specifications subject to change.
P137-GB Printed in Germany 3/2012

www.metz.de